



HEALTH ANNUAL STATEMENT

FOR THE YEAR ENDED DECEMBER 31, 2022
OF THE CONDITION AND AFFAIRS OF THE

AMH Health Plans of Maine, Inc.

NAIC Group Code 0671 0671 NAIC Company Code 16774 Employer's ID Number 84-4181695
(Current) (Prior)

Organized under the Laws of Maine, State of Domicile or Port of Entry ME

Country of Domicile United States of America

Licensed as business type: Other

Is HMO Federally Qualified? Yes [] No []

Incorporated/Organized 01/02/2020 Commenced Business 04/22/2020

Statutory Home Office 2 Gannett Drive, South Portland, ME, US 04106
(Street and Number) (City or Town, State, Country and Zip Code)

Main Administrative Office 2 Gannett Drive
(Street and Number)
South Portland, ME, US 04106 866-583-6182
(City or Town, State, Country and Zip Code) (Area Code) (Telephone Number)

Mail Address 2 Gannett Drive, South Portland, ME, US 04106
(Street and Number or P.O. Box) (City or Town, State, Country and Zip Code)

Primary Location of Books and Records 220 Virginia Avenue
(Street and Number)
Indianapolis, IN, US 46204 317-488-6000
(City or Town, State, Country and Zip Code) (Area Code) (Telephone Number)

Internet Website Address www.elevancehealth.com

Statutory Statement Contact Leigh Barrett, 317-432-6988
(Name) (Area Code) (Telephone Number)
leigh.barrett@elevancehealth.com 317-488-6200
(E-mail Address) (FAX Number)

OFFICERS

President and Chairperson Albert Graton Swallow III # Treasurer Vincent Edward Scher
 Secretary Kathleen Susan Kiefer Assistant Treasurer Eric (Rick) Kenneth Noble

OTHER

DIRECTORS OR TRUSTEES

<u>Aleksey Furman</u>	<u>Kimberly Switlick-Prose #</u>	<u>Scott Douglas Mills</u>
<u>Francis George McGinty</u>	<u>Raul Guillermo Smith</u>	<u>David Earl Warren</u>
<u>Albert Graton Swallow III</u>		

State of Indiana SS
 County of Johnson

The officers of this reporting entity being duly sworn, each depose and say that they are the described officers of said reporting entity, and that on the reporting period stated above, all of the herein described assets were the absolute property of the said reporting entity, free and clear from any liens or claims thereon, except as herein stated, and that this statement, together with related exhibits, schedules and explanations therein contained, annexed or referred to, is a full and true statement of all the assets and liabilities and of the condition and affairs of the said reporting entity as of the reporting period stated above, and of its income and deductions therefrom for the period ended, and have been completed in accordance with the NAIC Annual Statement Instructions and Accounting Practices and Procedures manual except to the extent that: (1) state law may differ; or, (2) that state rules or regulations require differences in reporting not related to accounting practices and procedures, according to the best of their information, knowledge and belief, respectively. Furthermore, the scope of this attestation by the described officers also includes the related corresponding electronic filing with the NAIC, when required, that is an exact copy (except for formatting differences due to electronic filing) of the enclosed statement. The electronic filing may be requested by various regulators in lieu of or in addition to the enclosed statement.

DocuSigned by:

 295E802AB614AB
 Albert Graton Swallow III
 President and Chairperson

DocuSigned by:

 DB5175EE05784B1...
 Kathleen Susan Kiefer
 Secretary

DocuSigned by:

 A85A372D04143E...
 Vincent Edward Scher
 Treasurer

Subscribed and sworn to before me this
14th day of February 2023

 Rita F. Gentry
 Executive Assistant
 1/17/2029

- a. Is this an original filing? Yes [X] No []
 b. If no,
 1. State the amendment number.....
 2. Date filed
 3. Number of pages attached.....

Rita F. Gentry
 Notary Public
 SEAL
 Johnson County, State of Indiana
 My Commission Expires January 17, 2029
 Commission No. NP0641321

ANNUAL STATEMENT FOR THE YEAR 2022 OF THE AMH Health Plans of Maine, Inc.

ASSETS

	Current Year			Prior Year
	1 Assets	2 Nonadmitted Assets	3 Net Admitted Assets (Cols. 1 - 2)	4 Net Admitted Assets
1. Bonds (Schedule D)	109,666		109,666	111,445
2. Stocks (Schedule D):				
2.1 Preferred stocks			0	0
2.2 Common stocks			0	0
3. Mortgage loans on real estate (Schedule B):				
3.1 First liens			0	0
3.2 Other than first liens.....			0	0
4. Real estate (Schedule A):				
4.1 Properties occupied by the company (less \$ encumbrances)			0	0
4.2 Properties held for the production of income (less \$ encumbrances)			0	0
4.3 Properties held for sale (less \$ encumbrances)			0	0
5. Cash (\$ 6,746,026 , Schedule E - Part 1), cash equivalents (\$, Schedule E - Part 2) and short-term investments (\$, Schedule DA)	6,746,026		6,746,026	4,588,681
6. Contract loans, (including \$ premium notes)			0	0
7. Derivatives (Schedule DB)			0	0
8. Other invested assets (Schedule BA)			0	0
9. Receivables for securities			0	0
10. Securities lending reinvested collateral assets (Schedule DL)			0	0
11. Aggregate write-ins for invested assets	0	0	0	0
12. Subtotals, cash and invested assets (Lines 1 to 11)	6,855,692	0	6,855,692	4,700,126
13. Title plants less \$ charged off (for Title insurers only)			0	0
14. Investment income due and accrued	2,250	1,500	750	750
15. Premiums and considerations:				
15.1 Uncollected premiums and agents' balances in the course of collection	5,916	1,833	4,083	11,306
15.2 Deferred premiums, agents' balances and installments booked but deferred and not yet due (including \$ earned but unbilled premiums)			0	0
15.3 Accrued retrospective premiums (\$) and contracts subject to redetermination (\$ 234,423)	234,423		234,423	48,450
16. Reinsurance:				
16.1 Amounts recoverable from reinsurers			0	0
16.2 Funds held by or deposited with reinsured companies			0	0
16.3 Other amounts receivable under reinsurance contracts			0	0
17. Amounts receivable relating to uninsured plans			0	0
18.1 Current federal and foreign income tax recoverable and interest thereon			0	7,815
18.2 Net deferred tax asset			0	0
19. Guaranty funds receivable or on deposit			0	0
20. Electronic data processing equipment and software			0	0
21. Furniture and equipment, including health care delivery assets (\$)			0	0
22. Net adjustment in assets and liabilities due to foreign exchange rates			0	0
23. Receivables from parent, subsidiaries and affiliates			0	73,254
24. Health care (\$ 40,623) and other amounts receivable	74,252	33,629	40,623	7,193
25. Aggregate write-ins for other than invested assets	1,074	1,074	0	40,894
26. Total assets excluding Separate Accounts, Segregated Accounts and Protected Cell Accounts (Lines 12 to 25)	7,173,606	38,036	7,135,571	4,889,788
27. From Separate Accounts, Segregated Accounts and Protected Cell Accounts			0	0
28. Total (Lines 26 and 27)	7,173,606	38,036	7,135,571	4,889,788
DETAILS OF WRITE-INS				
1101.				
1102.				
1103.				
1198. Summary of remaining write-ins for Line 11 from overflow page	0	0	0	0
1199. Totals (Lines 1101 thru 1103 plus 1198)(Line 11 above)	0	0	0	0
2501. SIT recoverable			0	40,894
2502. Prepaid expenses	1,074	1,074	0	
2503.				
2598. Summary of remaining write-ins for Line 25 from overflow page	0	0	0	0
2599. Totals (Lines 2501 thru 2503 plus 2598)(Line 25 above)	1,074	1,074	0	40,894

LIABILITIES, CAPITAL AND SURPLUS

	Current Year			Prior Year
	1 Covered	2 Uncovered	3 Total	4 Total
1. Claims unpaid (less \$0 reinsurance ceded)	879,572		879,572	219,178
2. Accrued medical incentive pool and bonus amounts	18,913		18,913	5,969
3. Unpaid claims adjustment expenses.....	26,388		26,388	6,094
4. Aggregate health policy reserves, including the liability of \$0 for medical loss ratio rebate per the Public Health Service Act	2,073,261		2,073,261	605,420
5. Aggregate life policy reserves.....			0	0
6. Property/casualty unearned premium reserves.....			0	0
7. Aggregate health claim reserves.....			0	0
8. Premiums received in advance.....	1,784		1,784	1,716
9. General expenses due or accrued.....	22		22	40,798
10.1 Current federal and foreign income tax payable and interest thereon (including \$ on realized capital gains (losses))			0	0
10.2 Net deferred tax liability.....	0		0	0
11. Ceded reinsurance premiums payable.....			0	0
12. Amounts withheld or retained for the account of others.....	541		541	407
13. Remittances and items not allocated.....	12,702		12,702	5,106
14. Borrowed money (including \$ current) and interest thereon \$ (including \$ current).....			0	0
15. Amounts due to parent, subsidiaries and affiliates.....	83,875		83,875	0
16. Derivatives.....			0	0
17. Payable for securities.....			0	0
18. Payable for securities lending			0	0
19. Funds held under reinsurance treaties (with \$ authorized reinsurers, \$0 unauthorized reinsurers and \$0 certified reinsurers).....			0	0
20. Reinsurance in unauthorized and certified (\$) companies			0	0
21. Net adjustments in assets and liabilities due to foreign exchange rates			0	0
22. Liability for amounts held under uninsured plans.....	285,196		285,196	68,744
23. Aggregate write-ins for other liabilities (including \$3,939 current).....	3,939	0	3,939	0
24. Total liabilities (Lines 1 to 23).....	3,386,193	0	3,386,193	953,432
25. Aggregate write-ins for special surplus funds.....	XXX	XXX	0	0
26. Common capital stock.....	XXX	XXX	1,000,000	1,000,000
27. Preferred capital stock.....	XXX	XXX		
28. Gross paid in and contributed surplus.....	XXX	XXX	7,500,000	4,000,000
29. Surplus notes.....	XXX	XXX		
30. Aggregate write-ins for other than special surplus funds.....	XXX	XXX	0	0
31. Unassigned funds (surplus).....	XXX	XXX	(4,750,622)	(1,063,644)
32. Less treasury stock, at cost:				
32.1 shares common (value included in Line 26 \$).....	XXX	XXX		
32.2 shares preferred (value included in Line 27 \$).....	XXX	XXX		
33. Total capital and surplus (Lines 25 to 31 minus Line 32).....	XXX	XXX	3,749,378	3,936,356
34. Total liabilities, capital and surplus (Lines 24 and 33).....	XXX	XXX	7,135,571	4,889,788
DETAILS OF WRITE-INS				
2301. Other liabilities	3,939		3,939	
2302.				
2303.				
2398. Summary of remaining write-ins for Line 23 from overflow page	0	0	0	0
2399. Totals (Lines 2301 thru 2303 plus 2398)(Line 23 above)	3,939	0	3,939	0
2501.	XXX	XXX		
2502.	XXX	XXX		
2503.	XXX	XXX		
2598. Summary of remaining write-ins for Line 25 from overflow page	XXX	XXX	0	0
2599. Totals (Lines 2501 thru 2503 plus 2598)(Line 25 above)	XXX	XXX	0	0
3001.	XXX	XXX		
3002.	XXX	XXX		
3003.	XXX	XXX		
3098. Summary of remaining write-ins for Line 30 from overflow page	XXX	XXX	0	0
3099. Totals (Lines 3001 thru 3003 plus 3098)(Line 30 above)	XXX	XXX	0	0

STATEMENT OF REVENUE AND EXPENSES

	Current Year		Prior Year
	1 Uncovered	2 Total	3 Total
1. Member Months.....	XXX	9,790	2,932
2. Net premium income (including \$ non-health premium income)	XXX	7,215,394	2,119,282
3. Change in unearned premium reserves and reserve for rate credits	XXX	(45,032)	6,015
4. Fee-for-service (net of \$ medical expenses)	XXX	0	0
5. Risk revenue	XXX	0	0
6. Aggregate write-ins for other health care related revenues	XXX	0	0
7. Aggregate write-ins for other non-health revenues	XXX	0	0
8. Total revenues (Lines 2 to 7)	XXX	7,170,362	2,125,297
Hospital and Medical:			
9. Hospital/medical benefits		6,408,750	1,563,636
10. Other professional services		642,998	32,482
11. Outside referrals		0	0
12. Emergency room and out-of-area		580,771	109,160
13. Prescription drugs		240,620	113,556
14. Aggregate write-ins for other hospital and medical.....	0	0	0
15. Incentive pool, withhold adjustments and bonus amounts		83,446	20,429
16. Subtotal (Lines 9 to 15)	0	7,956,585	1,839,263
Less:			
17. Net reinsurance recoveries		0	0
18. Total hospital and medical (Lines 16 minus 17)	0	7,956,585	1,839,263
19. Non-health claims (net)			
20. Claims adjustment expenses, including \$ 190,449 cost containment expenses		378,688	214,943
21. General administrative expenses		1,043,112	517,424
22. Increase in reserves for life and accident and health contracts (including \$ increase in reserves for life only)		1,428,824	406,393
23. Total underwriting deductions (Lines 18 through 22).....	0	10,807,209	2,978,023
24. Net underwriting gain or (loss) (Lines 8 minus 23)	XXX	(3,636,847)	(852,726)
25. Net investment income earned (Exhibit of Net Investment Income, Line 17)		(7,581)	(8,974)
26. Net realized capital gains (losses) less capital gains tax of \$ 0		0	
27. Net investment gains (losses) (Lines 25 plus 26)	0	(7,581)	(8,974)
28. Net gain or (loss) from agents' or premium balances charged off [(amount recovered \$) (amount charged off \$ (2,952))]		(2,952)	(482)
29. Aggregate write-ins for other income or expenses	0	(26)	0
30. Net income or (loss) after capital gains tax and before all other federal income taxes (Lines 24 plus 27 plus 28 plus 29)	XXX	(3,647,406)	(862,182)
31. Federal and foreign income taxes incurred	XXX	7,815	(6,954)
32. Net income (loss) (Lines 30 minus 31)	XXX	(3,655,221)	(855,228)
DETAILS OF WRITE-INS			
0601.	XXX		
0602.	XXX		
0603.	XXX		
0698. Summary of remaining write-ins for Line 6 from overflow page	XXX	0	0
0699. Totals (Lines 0601 thru 0603 plus 0698)(Line 6 above)	XXX	0	0
0701.	XXX		
0702.	XXX		
0703.	XXX		
0798. Summary of remaining write-ins for Line 7 from overflow page	XXX	0	0
0799. Totals (Lines 0701 thru 0703 plus 0798)(Line 7 above)	XXX	0	0
1401.			
1402.			
1403.			
1498. Summary of remaining write-ins for Line 14 from overflow page	0	0	0
1499. Totals (Lines 1401 thru 1403 plus 1498)(Line 14 above)	0	0	0
2901. Other Income (expense)		(26)	
2902.			
2903.			
2998. Summary of remaining write-ins for Line 29 from overflow page	0	0	0
2999. Totals (Lines 2901 thru 2903 plus 2998)(Line 29 above)	0	(26)	0

STATEMENT OF REVENUE AND EXPENSES (Continued)

	1 Current Year	2 Prior Year
CAPITAL AND SURPLUS ACCOUNT		
33. Capital and surplus prior reporting year.....	3,936,356	2,238,256
34. Net income or (loss) from Line 32	(3,655,221)	(855,228)
35. Change in valuation basis of aggregate policy and claim reserves		
36. Change in net unrealized capital gains (losses) less capital gains tax of \$0		
37. Change in net unrealized foreign exchange capital gain or (loss)		
38. Change in net deferred income tax	0	(41,893)
39. Change in nonadmitted assets	(31,757)	(4,779)
40. Change in unauthorized and certified reinsurance	0	0
41. Change in treasury stock	0	0
42. Change in surplus notes	0	0
43. Cumulative effect of changes in accounting principles.....		
44. Capital Changes:		
44.1 Paid in	0	0
44.2 Transferred from surplus (Stock Dividend).....	0	0
44.3 Transferred to surplus.....		
45. Surplus adjustments:		
45.1 Paid in	3,500,000	2,600,000
45.2 Transferred to capital (Stock Dividend)		
45.3 Transferred from capital		
46. Dividends to stockholders		
47. Aggregate write-ins for gains or (losses) in surplus	0	0
48. Net change in capital and surplus (Lines 34 to 47)	(186,978)	1,698,100
49. Capital and surplus end of reporting period (Line 33 plus 48)	3,749,378	3,936,356
DETAILS OF WRITE-INS		
4701.		
4702.		
4703.		
4798. Summary of remaining write-ins for Line 47 from overflow page	0	0
4799. Totals (Lines 4701 thru 4703 plus 4798)(Line 47 above)	0	0

ANNUAL STATEMENT FOR THE YEAR 2022 OF THE AMH Health Plans of Maine, Inc.

CASH FLOW

	1	2
	Current Year	Prior Year
Cash from Operations		
1. Premiums collected net of reinsurance	7,028,864	2,064,927
2. Net investment income	(9,366)	(3,629)
3. Miscellaneous income	0	0
4. Total (Lines 1 through 3)	7,019,498	2,061,298
5. Benefit and loss related payments	7,346,134	1,625,481
6. Net transfers to Separate Accounts, Segregated Accounts and Protected Cell Accounts		
7. Commissions, expenses paid and aggregate write-ins for deductions	1,184,350	662,076
8. Dividends paid to policyholders		
9. Federal and foreign income taxes paid (recovered) net of \$ tax on capital gains (losses)	0	0
10. Total (Lines 5 through 9)	8,530,484	2,287,557
11. Net cash from operations (Line 4 minus Line 10)	(1,510,985)	(226,259)
Cash from Investments		
12. Proceeds from investments sold, matured or repaid:		
12.1 Bonds	0	0
12.2 Stocks	0	0
12.3 Mortgage loans	0	0
12.4 Real estate	0	0
12.5 Other invested assets	0	0
12.6 Net gains or (losses) on cash, cash equivalents and short-term investments	0	0
12.7 Miscellaneous proceeds	0	0
12.8 Total investment proceeds (Lines 12.1 to 12.7)	0	0
13. Cost of investments acquired (long-term only):		
13.1 Bonds	0	0
13.2 Stocks	0	0
13.3 Mortgage loans	0	0
13.4 Real estate	0	0
13.5 Other invested assets	0	0
13.6 Miscellaneous applications	0	0
13.7 Total investments acquired (Lines 13.1 to 13.6)	0	0
14. Net increase (decrease) in contract loans and premium notes	0	0
15. Net cash from investments (Line 12.8 minus Line 13.7 minus Line 14)	0	0
Cash from Financing and Miscellaneous Sources		
16. Cash provided (applied):		
16.1 Surplus notes, capital notes	0	0
16.2 Capital and paid in surplus, less treasury stock	3,500,000	2,600,000
16.3 Borrowed funds	0	0
16.4 Net deposits on deposit-type contracts and other insurance liabilities	0	0
16.5 Dividends to stockholders	0	0
16.6 Other cash provided (applied)	168,330	329,606
17. Net cash from financing and miscellaneous sources (Lines 16.1 to 16.4 minus Line 16.5 plus Line 16.6)	3,668,330	2,929,606
RECONCILIATION OF CASH, CASH EQUIVALENTS AND SHORT-TERM INVESTMENTS		
18. Net change in cash, cash equivalents and short-term investments (Line 11, plus Lines 15 and 17)	2,157,345	2,703,347
19. Cash, cash equivalents and short-term investments:		
19.1 Beginning of year	4,588,681	1,885,334
19.2 End of year (Line 18 plus Line 19.1)	6,746,026	4,588,681

Note: Supplemental disclosures of cash flow information for non-cash transactions:

--	--	--

ANNUAL STATEMENT FOR THE YEAR 2022 OF THE AMH Health Plans of Maine, Inc.

ANALYSIS OF OPERATIONS BY LINES OF BUSINESS

	1	2	3	4	5	6	7	8	9	10
	Total	Comprehensive (Hospital & Medical)	Medicare Supplement	Dental Only	Vision Only	Federal Employees Health Benefits Plan	Title XVIII Medicare	Title XIX Medicaid	Other Health	Other Non-Health
1. Net premium income	7,215,394						7,215,394			
2. Change in unearned premium reserves and reserve for rate credit	(45,032)						(45,032)			
3. Fee-for-service (net of \$ medical expenses)	0									XXX
4. Risk revenue	0									XXX
5. Aggregate write-ins for other health care related revenues	0	0	0	0	0	0	0	0	0	XXX
6. Aggregate write-ins for other non-health care related revenues	0	XXX	XXX	XXX	XXX	XXX	XXX	XXX	XXX	0
7. Total revenues (Lines 1 to 6)	7,170,362	0	0	0	0	0	7,170,362	0	0	0
8. Hospital/medical benefits	6,408,750						6,408,750			XXX
9. Other professional services	642,998						642,998			XXX
10. Outside referrals	0						0			XXX
11. Emergency room and out-of-area	580,771						580,771			XXX
12. Prescription drugs	240,620						240,620			XXX
13. Aggregate write-ins for other hospital and medical	0	0	0	0	0	0	0	0	0	XXX
14. Incentive pool, withhold adjustments and bonus amounts	83,446						83,446			XXX
15. Subtotal (Lines 8 to 14)	7,956,585	0	0	0	0	0	7,956,585	0	0	XXX
16. Net reinsurance recoveries	0									XXX
17. Total medical and hospital (Lines 15 minus 16)	7,956,585	0	0	0	0	0	7,956,585	0	0	XXX
18. Non-health claims (net)	0	XXX	XXX	XXX	XXX	XXX	XXX	XXX	XXX	
19. Claims adjustment expenses including \$ 190,449 cost containment expenses	378,688						378,688			
20. General administrative expenses	1,043,112						1,043,112			
21. Increase in reserves for accident and health contracts	1,428,824						1,428,824			XXX
22. Increase in reserves for life contracts	0	XXX	XXX	XXX	XXX	XXX	XXX	XXX	XXX	
23. Total underwriting deductions (Lines 17 to 22)	10,807,209	0	0	0	0	0	10,807,209	0	0	0
24. Total underwriting gain or (loss) (Line 7 minus Line 23)	(3,636,847)	0	0	0	0	0	(3,636,847)	0	0	0
DETAILS OF WRITE-INS										
0501.										XXX
0502.										XXX
0503.										XXX
0598. Summary of remaining write-ins for Line 5 from overflow page	0	0	0	0	0	0	0	0	0	XXX
0599. Totals (Lines 0501 thru 0503 plus 0598) (Line 5 above)	0	0	0	0	0	0	0	0	0	XXX
0601.		XXX	XXX	XXX	XXX	XXX	XXX	XXX	XXX	
0602.		XXX	XXX	XXX	XXX	XXX	XXX	XXX	XXX	
0603.		XXX	XXX	XXX	XXX	XXX	XXX	XXX	XXX	
0698. Summary of remaining write-ins for Line 6 from overflow page	0	XXX	XXX	XXX	XXX	XXX	XXX	XXX	XXX	0
0699. Totals (Lines 0601 thru 0603 plus 0698) (Line 6 above)	0	XXX	XXX	XXX	XXX	XXX	XXX	XXX	XXX	0
1301.										XXX
1302.										XXX
1303.										XXX
1398. Summary of remaining write-ins for Line 13 from overflow page	0	0	0	0	0	0	0	0	0	XXX
1399. Totals (Lines 1301 thru 1303 plus 1398) (Line 13 above)	0	0	0	0	0	0	0	0	0	XXX

ANNUAL STATEMENT FOR THE YEAR 2022 OF THE AMH Health Plans of Maine, Inc.

UNDERWRITING AND INVESTMENT EXHIBIT

PART 1 - PREMIUMS

Line of Business	1 Direct Business	2 Reinsurance Assumed	3 Reinsurance Ceded	4 Net Premium Income (Cols. 1 + 2 - 3)
1. Comprehensive (hospital and medical) individual				0
2. Comprehensive (hospital and medical) group				0
3. Medicare Supplement				0
4. Dental only				0
5. Vision only				0
6. Federal Employees Health Benefits Plan	0			0
7. Title XVIII - Medicare	7,215,394			7,215,394
8. Title XIX - Medicaid	0			0
9. Credit A&H				0
10. Disability Income				0
11. Long-Term Care				0
12. Other health				0
13. Health subtotal (Lines 1 through 12)	7,215,394	0	0	7,215,394
14. Life	0			0
15. Property/casualty	0			0
16. Totals (Lines 13 to 15)	7,215,394	0	0	7,215,394

ANNUAL STATEMENT FOR THE YEAR 2022 OF THE AMH Health Plans of Maine, Inc.

UNDERWRITING AND INVESTMENT EXHIBIT

PART 2 - CLAIMS INCURRED DURING THE YEAR

	1 Total	Comprehensive (Hospital & Medical)		4 Medicare Supplement	5 Dental Only	6 Vision Only	7 Federal Employees Health Benefits Plan	8 Title XVIII Medicare	9 Title XIX Medicaid	10 Credit A&H	11 Disability Income	12 Long-Term Care	13 Other Health	14 Other Non-Health
		2 Individual	3 Group											
1. Payments during the year:														
1.1 Direct	7,275,632							7,275,632						
1.2 Reinsurance assumed	0													
1.3 Reinsurance ceded	0													
1.4 Net	7,275,632	0	0	0	0	0	0	7,275,632	0	0	0	0	0	0
2. Paid medical incentive pools and bonuses	70,502							70,502						
3. Claim liability December 31, current year from Part 2A:														
3.1 Direct	879,572	0	0	0	0	0	0	879,572	0	0	0	0	0	0
3.2 Reinsurance assumed	0	0	0	0	0	0	0	0	0	0	0	0	0	0
3.3 Reinsurance ceded	0	0	0	0	0	0	0	0	0	0	0	0	0	0
3.4 Net	879,572	0	0	0	0	0	0	879,572	0	0	0	0	0	0
4. Claim reserve December 31, current year from Part 2D:														
4.1 Direct	0													
4.2 Reinsurance assumed	0													
4.3 Reinsurance ceded	0													
4.4 Net	0	0	0	0	0	0	0	0	0	0	0	0	0	0
5. Accrued medical incentive pools and bonuses, current year	18,913							18,913						
6. Net health care receivables (a)	62,887							62,887						
7. Amounts recoverable from reinsurers December 31, current year	0													
8. Claim liability December 31, prior year from Part 2A:														
8.1 Direct	219,178			0	0	0	0	219,178	0	0	0	0	0	0
8.2 Reinsurance assumed	0			0	0	0	0	0	0	0	0	0	0	0
8.3 Reinsurance ceded	0			0	0	0	0	0	0	0	0	0	0	0
8.4 Net	219,178	0	0	0	0	0	0	219,178	0	0	0	0	0	0
9. Claim reserve December 31, prior year from Part 2D:														
9.1 Direct	0							0						
9.2 Reinsurance assumed	0													
9.3 Reinsurance ceded	0							0						
9.4 Net	0	0	0	0	0	0	0	0	0	0	0	0	0	0
10. Accrued medical incentive pools and bonuses, prior year	5,969							5,969						
11. Amounts recoverable from reinsurers December 31, prior year	0							0						
12. Incurred Benefits:														
12.1 Direct	7,873,139	0	0	0	0	0	0	7,873,139	0	0	0	0	0	0
12.2 Reinsurance assumed	0	0	0	0	0	0	0	0	0	0	0	0	0	0
12.3 Reinsurance ceded	0	0	0	0	0	0	0	0	0	0	0	0	0	0
12.4 Net	7,873,139	0	0	0	0	0	0	7,873,139	0	0	0	0	0	0
13. Incurred medical incentive pools and bonuses	83,446	0	0	0	0	0	0	83,446	0	0	0	0	0	0

(a) Excludes \$ loans or advances to providers not yet expensed.

ANNUAL STATEMENT FOR THE YEAR 2022 OF THE AMH Health Plans of Maine, Inc.

UNDERWRITING AND INVESTMENT EXHIBIT

PART 2A - CLAIMS LIABILITY END OF CURRENT YEAR

	1	Comprehensive (Hospital & Medical)		4	5	6	7	8	9	10	11	12	13	14
	Total	2 Individual	3 Group	Medicare Supplement	Dental Only	Vision Only	Federal Employees Health Benefits Plan	Title XVIII Medicare	Title XIX Medicaid	Credit A&H	Disability Income	Long-Term Care	Other Health	Other Non-Health
1. Reported in Process of Adjustment:														
1.1 Direct	231,922							231,922						
1.2 Reinsurance assumed	0													
1.3 Reinsurance ceded	0													
1.4 Net	231,922	0	0	0	0	0	0	231,922	0	0	0	0	0	0
2. Incurred but Unreported:														
2.1 Direct	647,650							647,650						
2.2 Reinsurance assumed	0													
2.3 Reinsurance ceded	0													
2.4 Net	647,650	0	0	0	0	0	0	647,650	0	0	0	0	0	0
3. Amounts Withheld from Paid Claims and Capitations:														
3.1 Direct	0													
3.2 Reinsurance assumed	0													
3.3 Reinsurance ceded	0													
3.4 Net	0	0	0	0	0	0	0	0	0	0	0	0	0	0
4. TOTALS:														
4.1 Direct	879,572	0	0	0	0	0	0	879,572	0	0	0	0	0	0
4.2 Reinsurance assumed	0	0	0	0	0	0	0	0	0	0	0	0	0	0
4.3 Reinsurance ceded	0	0	0	0	0	0	0	0	0	0	0	0	0	0
4.4 Net	879,572	0	0	0	0	0	0	879,572	0	0	0	0	0	0

ANNUAL STATEMENT FOR THE YEAR 2022 OF THE AMH Health Plans of Maine, Inc.

UNDERWRITING AND INVESTMENT EXHIBIT

PART 2B - ANALYSIS OF CLAIMS UNPAID - PRIOR YEAR - NET OF REINSURANCE

Line of Business	Claims Paid During the Year		Claim Reserve and Claim Liability December 31 of Current Year		5 Claims Incurred In Prior Years (Columns 1 + 3)	6 Estimated Claim Reserve and Claim Liability December 31 of Prior Year
	1	2	3	4		
	On Claims Incurred Prior to January 1 of Current Year	On Claims Incurred During the Year	On Claims Unpaid December 31 of Prior Year	On Claims Incurred During the Year		
1. Comprehensive (hospital and medical) individual					0	
2. Comprehensive (hospital and medical) group					0	
3. Medicare Supplement					0	0
4. Dental Only					0	0
5. Vision Only					0	0
6. Federal Employees Health Benefits Plan					0	0
7. Title XVIII - Medicare	288,318	6,998,679	(5,976)	885,548	282,342	219,178
8. Title XIX - Medicaid					0	0
9. Credit A&H					0	
10. Disability Income					0	
11. Long-Term Care					0	
12. Other health					0	0
13. Health subtotal (Lines 1 to 12)	288,318	6,998,679	(5,976)	885,548	282,342	219,178
14. Health care receivables (a)	0	74,252	0	0	0	0
15. Other non-health					0	0
16. Medical incentive pools and bonus amounts	16,186	54,316	1,621	17,292	17,807	5,969
17. Totals (Lines 13 - 14 + 15 + 16)	304,504	6,978,743	(4,355)	902,840	300,149	225,147

(a) Excludes \$ loans or advances to providers not yet expensed.

ANNUAL STATEMENT FOR THE YEAR 2022 OF THE AMH Health Plans of Maine, Inc.

UNDERWRITING AND INVESTMENT EXHIBIT

PART 2C - DEVELOPMENT OF PAID AND INCURRED HEALTH CLAIMS

(\$000 Omitted)

Section A - Paid Health Claims - Title XVIII

Year in Which Losses Were Incurred	Cumulative Net Amounts Paid				
	1 2018	2 2019	3 2020	4 2021	5 2022
1. Prior	0	0	0	0	0
2. 2018				0	0
3. 2019	XXX			0	0
4. 2020	XXX	XXX		0	0
5. 2021	XXX	XXX	XXX	1,614	1,919
6. 2022	XXX	XXX	XXX	XXX	6,979

Section B - Incurred Health Claims - Title XVIII

Year in Which Losses Were Incurred	Sum of Cumulative Net Amount Paid and Claim Liability, Claim Reserve and Medical Incentive Pool and Bonuses Outstanding at End of Year				
	1 2018	2 2019	3 2020	4 2021	5 2022
1. Prior	0	0	0	0	0
2. 2018				0	0
3. 2019	XXX			0	0
4. 2020	XXX	XXX		0	0
5. 2021	XXX	XXX	XXX	1,839	1,914
6. 2022	XXX	XXX	XXX	XXX	7,882

Section C - Incurred Year Health Claims and Claims Adjustment Expense Ratio - Title XVIII

Years in which Premiums were Earned and Claims were Incurred	1 Premiums Earned	2 Claims Payment	3 Claim Adjustment Expense Payments	4 (Col. 3/2) Percent	5 Claim and Claim Adjustment Expense Payments (Col. 2 + 3)	6 (Col. 5/1) Percent	7 Claims Unpaid	8 Unpaid Claims Adjustment Expenses	9 Total Claims and Claims Adjustment Expense Incurred (Col. 5+7+8)	10 (Col. 9/1) Percent
1. 2018		0	0	0.0	0	0.0	0	0	0	0.0
2. 2019		0	0	0.0	0	0.0	0	0	0	0.0
3. 2020		0	0	0.0	0	0.0	0	0	0	0.0
4. 2021	2,125	1,919	251	13.1	2,170	102.1	(5)	0	2,165	101.9
5. 2022	7,170	6,979	317	4.5	7,296	101.8	903	26	8,225	114.7

ANNUAL STATEMENT FOR THE YEAR 2022 OF THE AMH Health Plans of Maine, Inc.

UNDERWRITING AND INVESTMENT EXHIBIT

PART 2C - DEVELOPMENT OF PAID AND INCURRED HEALTH CLAIMS

(\$000 Omitted)

Section A - Paid Health Claims - Grand Total

Year in Which Losses Were Incurred	Cumulative Net Amounts Paid				
	1 2018	2 2019	3 2020	4 2021	5 2022
1. Prior	0	0	0	0	0
2. 2018	0	0	0	0	0
3. 2019	XXX	0	0	0	0
4. 2020	XXX	XXX	0	0	0
5. 2021	XXX	XXX	XXX	1,614	1,919
6. 2022	XXX	XXX	XXX	XXX	6,979

Section B - Incurred Health Claims - Grand Total

Year in Which Losses Were Incurred	Sum of Cumulative Net Amount Paid and Claim Liability, Claim Reserve and Medical Incentive Pool and Bonuses Outstanding at End of Year				
	1 2018	2 2019	3 2020	4 2021	5 2022
1. Prior	0	0	0	0	0
2. 2018	0	0	0	0	0
3. 2019	XXX	0	0	0	0
4. 2020	XXX	XXX	0	0	0
5. 2021	XXX	XXX	XXX	1,839	1,914
6. 2022	XXX	XXX	XXX	XXX	7,882

Section C - Incurred Year Health Claims and Claims Adjustment Expense Ratio - Grand Total

Years in which Premiums were Earned and Claims were Incurred	1 Premiums Earned	2 Claims Payment	3 Claim Adjustment Expense Payments	4 (Col. 3/2) Percent	5 Claim and Claim Adjustment Expense Payments (Col. 2 + 3)	6 (Col. 5/1) Percent	7 Claims Unpaid	8 Unpaid Claims Adjustment Expenses	9 Total Claims and Claims Adjustment Expense Incurred (Col. 5+7+8)	10 (Col. 9/1) Percent
1. 2018	0	0	0	0.0	0	0.0	0	0	0	0.0
2. 2019	0	0	0	0.0	0	0.0	0	0	0	0.0
3. 2020	0	0	0	0.0	0	0.0	0	0	0	0.0
4. 2021	2,125	1,919	251	13.1	2,170	102.1	(5)	0	2,165	101.9
5. 2022	7,170	6,979	317	4.5	7,296	101.8	903	26	8,225	114.7

12.GT

ANNUAL STATEMENT FOR THE YEAR 2022 OF THE AMH Health Plans of Maine, Inc.

UNDERWRITING AND INVESTMENT EXHIBIT

PART 2D - AGGREGATE RESERVE FOR ACCIDENT AND HEALTH CONTRACTS ONLY

	1 Total	Comprehensive (Hospital & Medical)		4 Medicare Supplement	5 Dental Only	6 Vision Only	7 Federal Employees Health Benefits Plan	8 Title XVIII Medicare	9 Title XIX Medicaid	10 Credit A&H	11 Disability Income	12 Long-Term Care	13 Other
		2 Individual	3 Group										
1. Unearned premium reserves	0												
2. Additional policy reserves (a)	2,034,244							2,034,244					
3. Reserve for future contingent benefits	0												
4. Reserve for rate credits or experience rating refunds (including \$ for investment income) ..	39,017							39,017					
5. Aggregate write-ins for other policy reserves	0	0	0	0	0	0	0	0	0	0	0	0	0
6. Totals (gross)	2,073,261	0	0	0	0	0	0	2,073,261	0	0	0	0	0
7. Reinsurance ceded	0												
8. Totals (Net)(Page 3, Line 4)	2,073,261	0	0	0	0	0	0	2,073,261	0	0	0	0	0
9. Present value of amounts not yet due on claims	0												
10. Reserve for future contingent benefits	0												
11. Aggregate write-ins for other claim reserves	0	0	0	0	0	0	0	0	0	0	0	0	0
12. Totals (gross)	0	0	0	0	0	0	0	0	0	0	0	0	0
13. Reinsurance ceded	0												
14. Totals (Net)(Page 3, Line 7)	0	0	0	0	0	0	0	0	0	0	0	0	0
DETAILS OF WRITE-INS													
0501.													
0502.													
0503.													
0598. Summary of remaining write-ins for Line 5 from overflow page	0	0	0	0	0	0	0	0	0	0	0	0	0
0599. Totals (Lines 0501 thru 0503 plus 0598) (Line 5 above)	0	0	0	0	0	0	0	0	0	0	0	0	0
1101.													
1102.													
1103.													
1198. Summary of remaining write-ins for Line 11 from overflow page	0	0	0	0	0	0	0	0	0	0	0	0	0
1199. Totals (Lines 1101 thru 1103 plus 1198) (Line 11 above)	0	0	0	0	0	0	0	0	0	0	0	0	0

(a) Includes \$ 2,034,244 premium deficiency reserve.

ANNUAL STATEMENT FOR THE YEAR 2022 OF THE AMH Health Plans of Maine, Inc.

UNDERWRITING AND INVESTMENT EXHIBIT

PART 3 - ANALYSIS OF EXPENSES

	Claim Adjustment Expenses		3 General Administrative Expenses	4 Investment Expenses	5 Total
	1 Cost Containment Expenses	2 Other Claim Adjustment Expenses			
1. Rent (\$ for occupancy of own building)	4,087	3,706	5,631	0	13,424
2. Salary, wages and other benefits	132,267	71,594	261,930	0	465,791
3. Commissions (less \$ ceded plus \$ assumed)	0	0	249,095	0	249,095
4. Legal fees and expenses	27	3	13,842	0	13,872
5. Certifications and accreditation fees	0	0	0	0	0
6. Auditing, actuarial and other consulting services ...	14,148	10,750	31,107	0	56,005
7. Traveling expenses	176	57	4,098	0	4,331
8. Marketing and advertising	402	1,521	188,836	0	190,759
9. Postage, express and telephone	916	2,463	29,739	0	33,118
10. Printing and office supplies	965	193	23,724	0	24,882
11. Occupancy, depreciation and amortization	3	9	5,586	0	5,598
12. Equipment	0	0	0	0	0
13. Cost or depreciation of EDP equipment and software	(1,341)	1,379	10,775	0	10,813
14. Outsourced services including EDP, claims, and other services	21,717	33,615	165,794	0	221,126
15. Boards, bureaus and association fees	29	0	461	0	490
16. Insurance, except on real estate	0	0	3,981	0	3,981
17. Collection and bank service charges	0	0	616	0	616
18. Group service and administration fees	2,400	7,644	(1,284)	0	8,760
19. Reimbursements by uninsured plans	0	0	0	0	0
20. Reimbursements from fiscal intermediaries	0	0	0	0	0
21. Real estate expenses	16	2	3,658	0	3,676
22. Real estate taxes	0	0	486	0	486
23. Taxes, licenses and fees:					
23.1 State and local insurance taxes	0	0	3,933	0	3,933
23.2 State premium taxes	0	0	0	0	0
23.3 Regulatory authority licenses and fees	38	17	8,683	0	8,738
23.4 Payroll taxes	7,971	4,524	15,017	0	27,512
23.5 Other (excluding federal income and real estate taxes)	0	0	426	0	426
24. Investment expenses not included elsewhere	0	0	0	8,877	8,877
25. Aggregate write-ins for expenses	6,628	50,762	16,978	0	74,368
26. Total expenses incurred (Lines 1 to 25)	190,449	188,239	1,043,112	8,877	(a) 1,430,677
27. Less expenses unpaid December 31, current year	0	26,388	22	0	26,410
28. Add expenses unpaid December 31, prior year	0	6,094	40,798	0	46,892
29. Amounts receivable relating to uninsured plans, prior year					0
30. Amounts receivable relating to uninsured plans, current year	0	0	0	0	0
31. Total expenses paid (Lines 26 minus 27 plus 28 minus 29 plus 30)	190,449	167,945	1,083,888	8,877	1,451,159
DETAILS OF WRITE-INS					
2501. Miscellaneous expenses	6,628	50,762	16,978	0	74,368
2502.					
2503.					
2598. Summary of remaining write-ins for Line 25 from overflow page	0	0	0	0	0
2599. Totals (Lines 2501 thru 2503 plus 2598)(Line 25 above)	6,628	50,762	16,978	0	74,368

(a) Includes management fees of \$ 1,102,048 to affiliates and \$ to non-affiliates.

EXHIBIT OF NET INVESTMENT INCOME

	1	2
	Collected During Year	Earned During Year
1. U.S. government bonds	(a) 0	0
1.1 Bonds exempt from U.S. tax	(a)	
1.2 Other bonds (unaffiliated)	(a) 1,221	1,221
1.3 Bonds of affiliates	(a) 0	0
2.1 Preferred stocks (unaffiliated)	(b) 0	0
2.11 Preferred stocks of affiliates	(b)	
2.2 Common stocks (unaffiliated)	0	0
2.21 Common stocks of affiliates	0	0
3. Mortgage loans	(c) 0	0
4. Real estate	(d) 0	0
5. Contract Loans	0	0
6. Cash, cash equivalents and short-term investments	(e) 75	75
7. Derivative instruments	(f) 0	0
8. Other invested assets	0	0
9. Aggregate write-ins for investment income	0	0
10. Total gross investment income	1,296	1,296
11. Investment expenses		(g) 8,877
12. Investment taxes, licenses and fees, excluding federal income taxes		(g) 0
13. Interest expense		(h)
14. Depreciation on real estate and other invested assets		(i)
15. Aggregate write-ins for deductions from investment income		0
16. Total deductions (Lines 11 through 15)		8,877
17. Net investment income (Line 10 minus Line 16)		(7,581)
DETAILS OF WRITE-INS		
0901.		
0902.		
0903.		
0998. Summary of remaining write-ins for Line 9 from overflow page	0	0
0999. Totals (Lines 0901 thru 0903 plus 0998) (Line 9, above)	0	0
1501.		
1502.		
1503.		
1598. Summary of remaining write-ins for Line 15 from overflow page		0
1599. Totals (Lines 1501 thru 1503 plus 1598) (Line 15, above)		0

- (a) Includes \$ 0 accrual of discount less \$ 1,779 amortization of premium and less \$ paid for accrued interest on purchases.
- (b) Includes \$ 0 accrual of discount less \$ 0 amortization of premium and less \$ paid for accrued dividends on purchases.
- (c) Includes \$ 0 accrual of discount less \$ 0 amortization of premium and less \$ paid for accrued interest on purchases.
- (d) Includes \$ for company's occupancy of its own buildings; and excludes \$ interest on encumbrances.
- (e) Includes \$ accrual of discount less \$ amortization of premium and less \$ paid for accrued interest on purchases.
- (f) Includes \$ accrual of discount less \$ amortization of premium.
- (g) Includes \$ investment expenses and \$ investment taxes, licenses and fees, excluding federal income taxes, attributable to segregated and Separate Accounts.
- (h) Includes \$ interest on surplus notes and \$ interest on capital notes.
- (i) Includes \$ 0 depreciation on real estate and \$ depreciation on other invested assets.

EXHIBIT OF CAPITAL GAINS (LOSSES)

	1	2	3	4	5
	Realized Gain (Loss) On Sales or Maturity	Other Realized Adjustments	Total Realized Capital Gain (Loss) (Columns 1 + 2)	Change in Unrealized Capital Gain (Loss)	Change in Unrealized Foreign Exchange Capital Gain (Loss)
1. U.S. Government bonds					
1.1 Bonds exempt from U.S. tax					
1.2 Other bonds (unaffiliated)					
1.3 Bonds of affiliates					
2.1 Preferred stocks (unaffiliated)					
2.11 Preferred stocks of affiliates					
2.2 Common stocks (unaffiliated)					
2.21 Common stocks of affiliates					
3. Mortgage loans					
4. Real estate					
5. Contract loans					
6. Cash, cash equivalents and short-term investments					
7. Derivative instruments					
8. Other invested assets					
9. Aggregate write-ins for capital gains (losses)					
10. Total capital gains (losses)					
NONE					
DETAILS OF WRITE-INS					
0901.					
0902.					
0903.					
0998. Summary of remaining write-ins for Line 9 from overflow page					
0999. Totals (Lines 0901 thru 0903 plus 0998) (Line 9, above)					

ANNUAL STATEMENT FOR THE YEAR 2022 OF THE AMH Health Plans of Maine, Inc.

EXHIBIT OF NON-ADMITTED ASSETS

	1	2	3
	Current Year Total Nonadmitted Assets	Prior Year Total Nonadmitted Assets	Change in Total Nonadmitted Assets (Col. 2 - Col. 1)
1. Bonds (Schedule D)			0
2. Stocks (Schedule D):			
2.1 Preferred stocks			0
2.2 Common stocks			0
3. Mortgage loans on real estate (Schedule B):			
3.1 First liens			0
3.2 Other than first liens.....			0
4. Real estate (Schedule A):			
4.1 Properties occupied by the company			0
4.2 Properties held for the production of income.....			0
4.3 Properties held for sale			0
5. Cash (Schedule E - Part 1), cash equivalents (Schedule E - Part 2) and short-term investments (Schedule DA)			0
6. Contract loans			0
7. Derivatives (Schedule DB)			0
8. Other invested assets (Schedule BA)			0
9. Receivables for securities			0
10. Securities lending reinvested collateral assets (Schedule DL)			0
11. Aggregate write-ins for invested assets	0	0	0
12. Subtotals, cash and invested assets (Lines 1 to 11)	0	0	0
13. Title plants (for Title insurers only)			0
14. Investment income due and accrued	1,500	1,500	0
15. Premiums and considerations:			
15.1 Uncollected premiums and agents' balances in the course of collection	1,833	0	(1,833)
15.2 Deferred premiums, agents' balances and installments booked but deferred and not yet due ..			0
15.3 Accrued retrospective premiums and contracts subject to redetermination		0	0
16. Reinsurance:			
16.1 Amounts recoverable from reinsurers			0
16.2 Funds held by or deposited with reinsured companies			0
16.3 Other amounts receivable under reinsurance contracts			0
17. Amounts receivable relating to uninsured plans			0
18.1 Current federal and foreign income tax recoverable and interest thereon		0	0
18.2 Net deferred tax asset			0
19. Guaranty funds receivable or on deposit			0
20. Electronic data processing equipment and software			0
21. Furniture and equipment, including health care delivery assets			0
22. Net adjustment in assets and liabilities due to foreign exchange rates			0
23. Receivable from parent, subsidiaries and affiliates			0
24. Health care and other amounts receivable	33,629	4,172	(29,457)
25. Aggregate write-ins for other than invested assets	1,074	607	(467)
26. Total assets excluding Separate Accounts, Segregated Accounts and Protected Cell Accounts (Lines 12 to 25)	38,036	6,279	(31,757)
27. From Separate Accounts, Segregated Accounts and Protected Cell Accounts			0
28. Total (Lines 26 and 27)	38,036	6,279	(31,757)
DETAILS OF WRITE-INS			
1101.			
1102.			
1103.			
1198. Summary of remaining write-ins for Line 11 from overflow page	0	0	0
1199. Totals (Lines 1101 thru 1103 plus 1198)(Line 11 above)	0	0	0
2501. Prepaid expenses	1,074	607	(467)
2502.			
2503.			
2598. Summary of remaining write-ins for Line 25 from overflow page	0	0	0
2599. Totals (Lines 2501 thru 2503 plus 2598)(Line 25 above)	1,074	607	(467)

EXHIBIT 1 - ENROLLMENT BY PRODUCT TYPE FOR HEALTH BUSINESS ONLY

Source of Enrollment	Total Members at End of					6 Current Year Member Months
	1 Prior Year	2 First Quarter	3 Second Quarter	4 Third Quarter	5 Current Year	
1. Health Maintenance Organizations						
2. Provider Service Organizations						
3. Preferred Provider Organizations	302	760	813	854	886	9,790
4. Point of Service						
5. Indemnity Only						
6. Aggregate write-ins for other lines of business.....	0	0	0	0	0	0
7. Total	302	760	813	854	886	9,790
DETAILS OF WRITE-INS						
0601.						
0602.						
0603.						
0698. Summary of remaining write-ins for Line 6 from overflow page	0	0	0	0	0	0
0699. Totals (Lines 0601 thru 0603 plus 0698) (Line 6 above)	0	0	0	0	0	0

NOTES TO FINANCIAL STATEMENTS

1. Summary of Significant Accounting Policies and Going Concern

A. Accounting Practices

The accompanying financial statements of AMH Health Plans of Maine, Inc. (the “Company”) have been prepared in conformity with the National Association of Insurance Commissioners’ (“NAIC”) *Annual Statement Instructions* and in accordance with accounting practices prescribed by the NAIC *Accounting Practices and Procedures Manual* (“NAIC SAP”), subject to any deviations prescribed or permitted by the Bureau.

A reconciliation of the Company’s net income (loss) and capital and surplus between NAIC SAP and practices prescribed and permitted by the Bureau is shown below:

	<u>SSAP #</u>	<u>F/S Page</u>	<u>F/S Line #</u>	<u>2022</u>	<u>2021</u>
<u>Net Income</u>					
(1) AMH Health Plans of Maine, Inc state basis (Page 4, Line 32, Columns 2 & 3)	<u>XXX</u>	<u>XXX</u>	<u>XXX</u>	<u>\$ (3,655,221)</u>	<u>\$ (855,228)</u>
(2) State Prescribed Practices that is an increase/(decrease) from NAIC SAP:	<u> </u>	<u> </u>	<u> </u>	<u> —</u>	<u> —</u>
(3) State Permitted Practices that is an increase/(decrease) from NAIC SAP:	<u> </u>	<u> </u>	<u> </u>	<u> —</u>	<u> —</u>
(4) NAIC SAP (1-2-3=4)	<u>XXX</u>	<u>XXX</u>	<u>XXX</u>	<u>\$ (3,655,221)</u>	<u>\$ (855,228)</u>
<u>Surplus</u>					
(5) AMH Health Plans of Maine, Inc state basis (Page 3, Line 33, Columns 3 & 4)	<u>XXX</u>	<u>XXX</u>	<u>XXX</u>	<u>\$ 3,749,378</u>	<u>\$ 3,936,356</u>
(6) State Prescribed Practices that is an increase/(decrease) from NAIC SAP:	<u> </u>	<u> </u>	<u> </u>	<u> —</u>	<u> —</u>
(7) State Permitted Practices that is an increase/(decrease) from NAIC SAP:	<u> </u>	<u> </u>	<u> </u>	<u> —</u>	<u> —</u>
(8) NAIC SAP (5-6-7=8)	<u>XXX</u>	<u>XXX</u>	<u>XXX</u>	<u>\$ 3,749,378</u>	<u>\$ 3,936,356</u>

B. Use of Estimates in the Preparation of the Financial Statements

Preparation of financial statements requires management to make estimates and assumptions that affect the amounts reported in the financial statements and accompanying notes. Actual results could differ from those estimates.

C. Accounting Policies

Health premiums are earned over the term of the related insurance policies. Premiums written are reported net of experience rating refunds. Premiums paid prior to the effective date are recorded on the balance sheet as premiums received in advance and are subsequently credited to income as earned during the coverage period. Premium rates are subject to approval by the Centers for Medicare and Medicaid Services. Expenses are charged to operations as incurred.

NOTES TO FINANCIAL STATEMENTS

In addition, the Company uses the following accounting policies:

- (1) Short-term investments include investments with maturities of less than one year and more than three months at the date of acquisition and are reported at amortized cost, which approximates fair value. Non-investment grade short-term investments are stated at the lower of amortized cost or fair value.
- (2) Investment grade bonds not backed by other loans are stated at amortized cost, with amortization calculated based on the modified scientific method, using lower of yield to call or yield to maturity. Non-investment grade bonds are stated at the lower of amortized cost or fair value as determined by various third-party pricing sources.
- (3) The Company has no investments in common stocks of unaffiliated companies.
- (4) The Company has no investments in preferred stocks.
- (5) The Company has no mortgage loans - real estate.
- (6) The Company has no loan-backed securities.
- (7) The Company has no investments in subsidiaries, controlled and affiliated companies.
- (8) The Company has no investments in joint ventures, partnerships or limited liability companies.
- (9) The Company has no derivative instruments.
- (10) The Company recognizes losses from other-than-temporary impairments (“OTTI”) of investments in accordance with Statements of Standard Accounting Practice (“SSAP”) No. 26R, *Bonds*; and SSAP No. 30, *Common Stock*; and SSAP No. 32R, *Preferred Stock*.
- (11) The Company does not anticipate investment income as a factor in premium deficiency calculations.
- (12) Unpaid claims and claims adjustment expenses include management’s best estimate of amounts based on historical claim development patterns and certain individual case estimates. The established liability considers health benefit provisions, business practices, economic conditions and other factors that may materially affect the cost, frequency and severity of claims. Liabilities for unpaid claims and claim adjustment expenses are based on assumptions and estimates, and while management believes such estimates are reasonable, the ultimate liability may be in excess of or less than the amount provided. The methods for making such estimates and for establishing the resulting liabilities are continually reviewed and changes in estimates are incorporated into current period estimates.
- (13) The Company has not modified its capitalization policy from the prior period.
- (14) Pharmacy rebate receivables are recorded when earned based upon actual rebate receivables billed and an estimate of receivables based upon current utilization of specific pharmaceuticals and provider contract terms.

D. Going Concern

Not applicable.

2. Accounting Changes and Corrections of Errors

There were no accounting changes or corrections of errors during the years ended December 31, 2022 and 2021.

NOTES TO FINANCIAL STATEMENTS

3. Business Combinations and Goodwill

A. Statutory Purchase Method

Not applicable.

B. Statutory Merger

Not applicable.

C. Assumption Reinsurance

Not applicable.

D. Impairment Loss

Not applicable.

E. Subcomponents and Calculation of Adjusted Surplus and Total Admitted Goodwill

Not applicable.

4. Discontinued Operations

The Company had no operations that were discontinued during 2022 or 2021.

5. Investments

A. Mortgage Loans, including Mezzanine Real Estate Loans

The Company did not have investments in mortgage loans at December 31, 2022 or 2021.

B. Debt Restructuring

The Company did not have invested assets that were restructured debt at December 31, 2022 or 2021.

C. Reverse Mortgages

The Company did not have investments in reverse mortgages at December 31, 2022 or 2021.

D. Loan-Backed Securities

- (1) The Company did not have loan-backed securities at December 31, 2022 and 2021.
- (2) The Company did not recognize OTTI on its loan-backed securities during the years ended December 31, 2022 and 2021.
- (3) The Company did not hold OTTI on its loan-backed securities at December 31, 2022 and 2021.
- (4) The Company had no impaired loan-backed securities for which an OTTI had not been recognized in earnings at December 31, 2022 and 2021.
- (5) The Company had no impaired loan-backed securities at December 31, 2022 and 2021.

NOTES TO FINANCIAL STATEMENTS

E. Dollar Repurchase Agreements and/or Securities Lending Transactions

The Company did not enter into repurchase agreements or securities lending transactions at December 31, 2022 or 2021.

F. Repurchase Agreements Transactions Accounted for as Secured Borrowing

The Company did not enter into repurchase agreement transactions accounted for as secured borrowing at December 31, 2022 or 2021.

G. Reverse Repurchase Agreements Transactions Accounted for as Secured Borrowing

The Company did not enter into reverse repurchase agreement transactions accounted for as a secured borrowing at December 31, 2022 or 2021.

H. Repurchase Agreements Transactions Accounted for as a Sale

The Company did not enter into repurchase agreement transactions accounted for as a sale at December 31, 2022 or 2021.

I. Reverse Repurchase Agreements Transactions Accounted for as a Sale

The Company did not enter into reverse repurchase agreement transactions accounted for as a sale at December 31, 2022 or 2021.

J. Real Estate

The Company did not have investments in real estate and did not engage in retail land sales operations during 2022 or 2021.

K. Investments in Low-Income Housing Tax Credits

The Company did not invest in properties generating low-income housing tax credits during 2022 or 2021.

NOTES TO FINANCIAL STATEMENTS

L. Restricted Assets

(1) Restricted assets (including pledged)

Restricted Asset Category	1	2	3	4	5	6	7
	Total Gross (Admitted & Nonadmitted) Restricted from Current Year	Total Gross (Admitted & Nonadmitted) Restricted from Prior Year	Increase/ (Decrease) (1 minus 2)	Total Current Year Nonadmitted Restricted	Total Current Year Admitted Restricted (1 minus 4)	Gross Admitted and Nonadmitted Restricted to Total Assets (a)	Admitted Restricted to Total Admitted Assets (b)
a. Subject to contractual obligation for which liability is not shown	\$ —	\$ —	\$ —	\$ —	\$ —	0.00 %	0.00 %
b. Collateral held under security lending agreements	—	—	—	—	—	0.00 %	0.00 %
c. Subject to repurchase agreements	—	—	—	—	—	0.00 %	0.00 %
d. Subject to reverse repurchase agreements	—	—	—	—	—	0.00 %	0.00 %
e. Subject to dollar repurchase agreements	—	—	—	—	—	0.00 %	0.00 %
f. Subject to dollar reverse repurchase agreements	—	—	—	—	—	0.00 %	0.00 %
g. Placed under option contracts	—	—	—	—	—	0.00 %	0.00 %
h. Letter stock or securities restricted as to sale-excluding FHLB capital stock	—	—	—	—	—	0.00 %	0.00 %
i. FHLB capital stock	—	—	—	—	—	0.00 %	0.00 %
j. On deposit with states	109,666	111,445	(1,779)	—	109,666	1.53 %	1.54 %
k. On deposit with other regulatory bodies	—	—	—	—	—	0.00 %	0.00 %
l. Pledged as collateral to FHLB (including assets backing funding agreements)	—	—	—	—	—	0.00 %	0.00 %
m. Pledged as collateral not captured in other categories	—	—	—	—	—	0.00 %	0.00 %
n. Other restricted assets	—	—	—	—	—	0.00 %	0.00 %
o. Total Restricted Assets	\$ 109,666	\$ 111,445	\$ (1,779)	\$ —	\$ 109,666	1.53 %	1.54 %

(a) Column 1 divided by Asset Page, Column 1, Line 28

(b) Column 5 divided by Asset Page, Column 3, Line 28

(2) Not applicable.

(3) Not applicable.

(4) Not applicable.

M. Working Capital Finance Investments

The Company did not have any working capital finance investments at December 31, 2022 and 2021.

N. Offsetting and Netting of Assets and Liabilities

The Company did not have any offsetting or netting of assets and liabilities at December 31, 2022 and 2021.

O. 5GI Securities

The Company has no 5GI Securities as of December 31, 2022 and 2021.

P. Short Sales

The Company did not have any short sales at December 31, 2022 and 2021.

NOTES TO FINANCIAL STATEMENTS

Q. Prepayment Penalty and Acceleration Fees

The Company did not have any prepayment penalty or acceleration fees at December 31, 2022 and 2021

R. Reporting Entity's Share of Cash Pool by Asset Type

The Company did not participate in a cash pool at December 31, 2022 or 2021.

6. Joint Ventures, Partnerships and Limited Liability Companies

A. The Company has no investments in joint ventures, partnerships or LLCs.

B. Not applicable.

7. Investment Income

A. All investment income due and accrued with amounts that are over 90 days past due is non-admitted.

B. At December 31, 2022 and 2021 there was no nonadmitted accrued investment income.

8. Derivative Instruments

The Company has no derivative instruments.

NOTES TO FINANCIAL STATEMENTS

9. Income Taxes

A. The components of net deferred tax assets (liabilities):

(1) The components of net deferred tax asset (liabilities) are as follows:

	12/31/2022		
	(1)	(2)	(3)
	Ordinary	Capital	(Col 1+2) Total
(a) Gross Deferred Tax Assets	\$ 997,802	\$ —	\$ 997,802
(b) Statutory Valuation Allowance Adjustments	997,802	—	997,802
(c) Adjusted Gross Deferred Tax Assets (1a - 1b)	—	—	—
(d) Deferred Tax Assets Nonadmitted	—	—	—
(e) Subtotal Net Admitted Deferred Tax Asset (1c - 1d)	—	—	—
(f) Deferred Tax Liabilities	—	—	—
(g) Net Admitted Deferred Tax Asset/(Net Deferred Tax Liability) (1e - 1f)	\$ —	\$ —	\$ —

	12/31/2021		
	(4)	(5)	(6)
	Ordinary	Capital	(Col 4+5) Total
(a) Gross Deferred Tax Assets	\$ 217,197	\$ —	\$ 217,197
(b) Statutory Valuation Allowance Adjustments	217,197	—	217,197
(c) Adjusted Gross Deferred Tax Assets (1a - 1b)	—	—	—
(d) Deferred Tax Assets Nonadmitted	—	—	—
(e) Subtotal Net Admitted Deferred Tax Asset (1c - 1d)	—	—	—
(f) Deferred Tax Liabilities	—	—	—
(g) Net Admitted Deferred Tax Asset/(Net Deferred Tax Liability) (1e - 1f)	\$ —	\$ —	\$ —

	Change		
	(7)	(8)	(9)
	(Col 1-4) Ordinary	(Col 2-5) Capital	(Col 7+8) Total
(a) Gross Deferred Tax Assets	\$ 780,605	\$ —	\$ 780,605
(b) Statutory Valuation Allowance Adjustments	780,605	—	780,605
(c) Adjusted Gross Deferred Tax Assets (1a - 1b)	—	—	—
(d) Deferred Tax Assets Nonadmitted	—	—	—
(e) Subtotal Net Admitted Deferred Tax Asset (1c - 1d)	—	—	—
(f) Deferred Tax Liabilities	—	—	—
(g) Net Admitted Deferred Tax Asset/(Net Deferred Tax Liability) (1e - 1f)	\$ —	\$ —	\$ —

NOTES TO FINANCIAL STATEMENTS

(2) The amount of admitted adjusted gross deferred tax assets under each component of SSAP No. 101, *Income Taxes* (“SSAP No. 101”) are as follows:

12/31/2022		
(1)	(2)	(3)
Ordinary	Capital	(Col 1+2) Total

Admission Calculation Components SSAP No. 101

(a) Federal Income Taxes Paid in Prior Years Recoverable Through Loss Carrybacks.	\$	—	\$	—	\$	—
(b) Adjusted Gross Deferred Tax Assets Expected To Be Realized (Excluding The Amount Of Deferred Tax Assets From 2(a) above) After Application of the Threshold Limitation. (The Lesser of 2(b)1 and 2(b)2 Below)		—		—		—
1. Adjusted Gross Deferred Tax Assets Expected To Be Realized Following the Balance Sheet Date.		—		—		—
2. Adjusted Gross Deferred Tax Assets Allowed per Limitation Threshold.		XXX		XXX		562,407
(c) Adjusted Gross Deferred Tax Assets (Excluding The Amount Of Deferred Tax Assets From 2(a) and 2(b) above) Offset by Gross Deferred Tax Liabilities.		—		—		—
(d) Deferred Tax Assets Admitted as the result of application of SSAP No. 101. Total (2(a) + 2(b) + 2(c))	\$	—	\$	—	\$	—

12/31/2021		
(4)	(5)	(6)
Ordinary	Capital	(Col 4+5) Total

Admission Calculation Components SSAP No. 101

(a) Federal Income Taxes Paid in Prior Years Recoverable Through Loss Carrybacks.	\$	—	\$	—	\$	—
(b) Adjusted Gross Deferred Tax Assets Expected To Be Realized (Excluding The Amount Of Deferred Tax Assets From 2(a) above) After Application of the Threshold Limitation. (The Lesser of 2(b)1 and 2(b)2 Below)		—		—		—
1. Adjusted Gross Deferred Tax Assets Expected To Be Realized Following the Balance Sheet Date.		—		—		—
2. Adjusted Gross Deferred Tax Assets Allowed per Limitation Threshold.		XXX		XXX		590,453
(c) Adjusted Gross Deferred Tax Assets (Excluding The Amount Of Deferred Tax Assets From 2(a) and 2(b) above) Offset by Gross Deferred Tax Liabilities.		—		—		—
(d) Deferred Tax Assets Admitted as the result of application of SSAP No. 101. Total (2(a) + 2(b) + 2(c))	\$	—	\$	—	\$	—

Change		
(7)	(8)	(9)
(Col 1-4) Ordinary	(Col 2-5) Capital	(Col 7+8) Total

Admission Calculation Components SSAP No. 101

(a) Federal Income Taxes Paid in Prior Years Recoverable Through Loss Carrybacks.	\$	—	\$	—	\$	—
(b) Adjusted Gross Deferred Tax Assets Expected To Be Realized (Excluding The Amount Of Deferred Tax Assets From 2(a) above) After Application of the Threshold Limitation. (The Lesser of 2(b)1 and 2(b)2 Below)		—		—		—
1. Adjusted Gross Deferred Tax Assets Expected To Be Realized Following the Balance Sheet Date.		—		—		—
2. Adjusted Gross Deferred Tax Assets Allowed per Limitation Threshold.		XXX		XXX		(28,046)
(c) Adjusted Gross Deferred Tax Assets (Excluding The Amount Of Deferred Tax Assets From 2(a) and 2(b) above) Offset by Gross Deferred Tax Liabilities.		—		—		—
(d) Deferred Tax Assets Admitted as the result of application of SSAP No. 101. Total (2(a) + 2(b) + 2(c))	\$	—	\$	—	\$	—

NOTES TO FINANCIAL STATEMENTS

	2022	2021
(3) (a) Ratio Percentage Used To Determine Recovery Period And Threshold Limitation Amount.	484.22 %	449.42 %
(b) Amount Of Adjusted Capital And Surplus Used To Determine Recovery Period And Threshold Limitation In 2(b)2 Above.	\$ 3,749,378	\$ 3,936,356

	12/31/2022		12/31/2021		Change	
	(1) Ordinary	(2) Capital	(3) Ordinary	(4) Capital	(5) (Col 1-3) Ordinary	(6) (Col 2-4) Capital

Impact of Tax-Planning Strategies

(a) Determination of Adjusted Gross Deferred Tax Assets and Net Admitted Deferred Tax Assets, By Tax Character As A Percentage.						
1. Adjusted Gross DTAs Amount From Note 9A1(c)	\$ —	\$ —	\$ —	\$ —	\$ —	\$ —
2. Percentage of Adjusted Gross DTAs By Tax Character Attributable To The Impact Of Tax Planning Strategies	0.00 %	0.00 %	0.00 %	0.00 %	0.00 %	0.00 %
3. Net Admitted Adjusted Gross DTAs Amount From Note 9A1(e)	\$ —	\$ —	\$ —	\$ —	\$ —	\$ —
4. Percentage of Net Admitted Adjusted Gross DTAs By Tax Character Admitted Because Of The Impact Of Tax Planning Strategies	0.00 %	0.00 %	0.00 %	0.00 %	0.00 %	0.00 %

(b) Does the Company's tax-planning strategies include the use of reinsurance? Yes _____ No X

B. The Company has no unrecognized deferred tax liabilities at December 31, 2022.

C. Current income taxes incurred consist of the following major components:

	(1) 12/31/2022	(2) 12/31/2021	(3) (Col 1-2) Change
(1) Current Income Tax			
(a) Federal	\$ 7,815	\$ (94,436)	\$ 102,251
(b) Foreign	—	—	—
(c) Subtotal	7,815	(94,436)	102,251
(d) Federal income tax expense on net capital gains	—	—	—
(e) Utilization of capital loss carry-forwards	—	87,482	(87,482)
(f) Other	—	—	—
(g) Federal and foreign income taxes incurred	<u>\$ 7,815</u>	<u>\$ (6,954)</u>	<u>\$ 14,769</u>

NOTES TO FINANCIAL STATEMENTS

	(1) 12/31/2022	(2) 12/31/2021	(3) (Col 1-2) Change
(2) Deferred Tax Assets:			
(a) Ordinary			
(1) Discounting of unpaid losses	\$ 2,559	\$ 680	\$ 1,879
(2) Unearned premium reserve	75	70	5
(3) Policyholder reserves	—	—	—
(4) Investments	—	—	—
(5) Deferred acquisition costs	—	—	—
(6) Policyholder dividends accrual	—	—	—
(7) Fixed assets	—	—	—
(8) Compensation and benefits accrual	—	—	—
(9) Pension accrual	—	—	—
(10) Receivables - nonadmitted	7,447	876	6,571
(11) Net operating loss carry-forward	560,305	88,343	471,962
(12) Tax credit carry-forward	—	—	—
(13) Other	427,416	127,228	300,188
(99) Subtotal (sum of 2a1 through 2a13)	997,802	217,197	780,605
(b) Statutory valuation allowance adjustment	997,802	217,197	780,605
(c) Nonadmitted	—	—	—
(d) Admitted ordinary deferred tax assets (2a99 - 2b - 2c)	—	—	—
(e) Capital			
(1) Investments	—	—	—
(2) Net capital loss carry-forward	—	—	—
(3) Real estate	—	—	—
(4) Other	—	—	—
(99) Subtotal (2e1+2e2+2e3+2e4)	—	—	—
(f) Statutory valuation allowance adjustment	—	—	—
(g) Nonadmitted	—	—	—
(h) Admitted capital deferred tax assets (2e99 - 2f - 2g)	—	—	—
(i) Admitted deferred tax assets (2d + 2h)	\$ —	\$ —	\$ —
(3) Deferred Tax Liabilities:			
(a) Ordinary			
(1) Investments	\$ —	\$ —	\$ —
(2) Fixed assets	—	—	—
(3) Deferred and uncollected premium	—	—	—
(4) Policyholder reserves	—	—	—
(5) Other	—	—	—
(99) Subtotal (3a1+3a2+3a3+3a4+3a5)	—	—	—
(b) Capital			
(1) Investments	—	—	—
(2) Real estate	—	—	—
(3) Other	—	—	—
(99) Subtotal (3b1+3b2+3b3)	—	—	—
(c) Deferred tax liabilities (3a99 + 3b99)	—	—	—
(4) Net deferred tax assets/liabilities (2i - 3c)	\$ —	\$ —	\$ —

NOTES TO FINANCIAL STATEMENTS

D. The Company's income tax expense and change in deferred income taxes differs from the amount obtained by applying the federal statutory income tax rate of 21% for the year ended December 31 as follows:

	<u>2022</u>	<u>2021</u>
Tax expense computed using federal statutory rate	\$ (765,956)	\$ (181,058)
Change in nonadmitted assets	(6,669)	(1,004)
Tax exempt income and dividend received deduction net of proration	(192)	(195)
Prior year true-up and adjustments	(41,355)	(1)
Valuation allowance	780,605	217,197
Other, net	41,382	—
Total	<u>\$ 7,815</u>	<u>\$ 34,939</u>
Federal income taxes incurred	\$ 7,815	\$ (6,954)
Change in net deferred income taxes	—	41,893
Total statutory income taxes	<u>\$ 7,815</u>	<u>\$ 34,939</u>

E. Operating loss carryforwards:

(1) At December 31, 2022, the Company had the following unused net operating loss or tax credit carryforwards available to offset future taxable income. The losses or credits will begin to expire as noted.

<u>Unused NOL Carryforwards</u>	<u>Will Begin to Expire</u>	<u>Unused Tax Credit Carryforwards</u>	<u>Will begin to Expire</u>
\$ 2,668,118	2042	\$ —	

(2) The Company has no federal income taxes available for recoupment.

(3) The Company has no protective tax deposits reported as admitted assets under Section 6603 of the Internal Revenue Service Code as of December 31, 2022 or 2021

F. The Company's Federal Income Tax return is a separate filing. No owner has the required 80% to include them in a consolidated return. Thus, no tax sharing agreement is in place for federal income taxes. As of December 31, 2022, the statute of limitations of the 2022, 2021 and 2020 tax years remains open.

G. Not applicable.

H. Repatriation Transition Tax (RTT)

Not applicable.

I. Alternative Minimum Tax (AMT) Credit

On August 16, 2022, the U.S. government enacted the Inflation Reduction Act which includes a new corporate alternative minimum tax (the "Corporate AMT") of 15% on the adjusted financial statement of income ("AFSI") of corporations with average AFSI exceeding \$1.0 billion over a three-year period. The Corporate AMT is effective beginning after December 31, 2022. The Company has determined that it is not an applicable corporation, therefore it does not expect to be subject to the Corporate AMT in 2023.

10. Information Concerning Parent, Subsidiaries, Affiliates and Other Related Parties

A. Nature of the Relationship

The Company is a Maine domiciled stock insurance company and is a wholly-owned subsidiary of AMH Health, LLC ("AMH"), which is owned 50% by Anthem Partnership Holding Company ("APHC"), which is an indirect wholly-owned subsidiary of Elevance

NOTES TO FINANCIAL STATEMENTS

Health, a publicly traded company, a publicly traded company, and 50% by Maine Health, a not-for-profit corporation with hospitals, providers, and healthcare organizations primarily located in Maine. The shareholders of Elevance Health approved a proposal to amend its articles of incorporation to change the name to Elevance Health, Inc. from Anthem, Inc. The name change was effective June 27, 2022.

B. Significant Transactions for Each Period

The following significant transactions took place between the Company and its affiliates:

On June 30, 2022, the Company's parent, AMH Health LLC ("AMH"), paid a capital contribution to the Company in the amount of \$2,000,000, which was authorized on June 27, 2022.

On December 30, 2022, the Company's parent, AMH, paid a capital contribution to the Company in the amount of \$1,500,000, which was authorized on December 28, 2022.

On March 31, 2021 the Company's parent, AMH, paid a capital contribution to the Company in the amount of \$600,000, which was authorized on March 10, 2021.

On September 29, 2021 the Company's parent, AMH, paid a capital contribution to the Company in the amount of \$2,000,000, which was authorized on September 15, 2021

C. Transactions with Related Parties who are not Reported on Schedule Y

The Company has no transactions with related parties who are not reported on Schedule Y.

D. Amounts Due to or from Related Parties

At December 31, 2022, the Company reported no amounts due from affiliates. At December 31, 2022, the Company reported \$83,875 due to affiliates. At December 31, 2021, the Company reported \$73,254 due from affiliates. At December 31, 2021, the Company reported no amounts due to affiliates. The receivable and payable balances represent intercompany transactions that will be settled in accordance with the settlement terms of the intercompany agreement.

E. Management and Service Contracts and Cost Sharing Arrangements

The Company has entered into administrative services agreements with its affiliated companies. Pursuant to these agreements, various administrative, management and support services are provided to or provided by the Company. The costs and expenses related to these administrative management and support services are allocated to or allocated by the Company in an amount equal to the direct and indirect costs and expenses incurred in providing these services. Costs include expenses such as salaries, employee benefits, information technology, pharmacy benefits administration, communications, advertising, consulting services, rent, utilities, billing, accounting, underwriting, and product development, which support the Company's operations. These costs are allocated based on various utilization statistics.

Effective January 1, 2021, the Company has entered into a joinder affiliated services agreement as part of the Master Services Agreement between Anthem affiliates and Beacon Health Strategies LLC and Beacon Health Options, Inc.

NOTES TO FINANCIAL STATEMENTS

F. Guarantees or Contingencies for Related Parties

The Company did not enter into guarantees or undertakings for the benefit of an affiliate which would result in a material contingent exposure of the Company's or any affiliated insurer's assets or liabilities.

G. Nature of Control Relationships that Could Affect Operations or Financial Position

AMH owns all outstanding shares of the Company.

H. Amount Deducted for Investment in Upstream Company

The Company does not own shares of upstream intermediate entities or Elevance Health.

I. Detail of Investments in Affiliates Greater than 10% of Admitted Assets

At December 31, 2022 and 2021, the Company did not have investments in affiliates.

J. Write-down for Impairments of Investments in Subsidiaries, Controlled or Affiliated ("SCA") Companies

Not applicable.

K. Investment in a Foreign Insurance Subsidiary

The Company does not have investments in foreign insurance subsidiaries.

L. Investment in Downstream Non-insurance Holding Companies

The Company does not have investments in downstream non-insurance holding companies.

M. All SCA Investments

The Company has no SCA Investments.

N. Investment in Insurance SCAs

The Company does not have investments in Insurance SCAs.

O. SCA or SSAP 48 Entity Loss Tracking

The Company does not have losses on investments in Insurance SCAs and/or joint ventures, partnerships or LLCs.

11. Debt

A. Capital Notes and Other Debt

The Company had no capital notes or other debt outstanding at December 31, 2022 and 2021.

B. FHLB (Federal Home Loan Bank) Agreements

The Company had no FHLB agreements outstanding at December 31, 2022 and 2021.

NOTES TO FINANCIAL STATEMENTS

C. All Other Debt

The Company had no other debt outstanding at December 31, 2022 and 2021.

12. Retirement Plans, Deferred Compensation, Postemployment Benefits and Compensated Absences and Other Postretirement Benefit Plans

A. Defined Benefit Plan

Not applicable - See Note 12G.

B. Not applicable - See Note 12G.

C. Not applicable - See Note 12G.

D. Not applicable - See Note 12G.

E. Defined Contribution Plans

Not applicable - See Note 12G.

F. Multiemployer Plans

The Company does not participate in a multiemployer plan.

G. Consolidated/Holding Company Plans

The Company participates in a nonqualified deferred compensation plan sponsored by Elevance Health which covers certain employees once the participant reaches the maximum contribution amount for the Elevance Health 401(k) Plan (the "401(k) Plan"). The deferred amounts are payable according to the terms and subject to the conditions of the deferred compensation plan. Elevance Health allocates a share of the total accumulated costs of this plan to the Company based on the number of allocated employees subject to the deferred compensation plan. The Company has no legal obligation for benefits under this plan.

The Company participates in the Elevance Health 401(k) Plan, sponsored by ATH Holding Company, LLC ("ATH Holding") and covering substantially all employees. Voluntary employee contributions are matched by ATH Holding subject to certain limitations. ATH Holding allocates a share of the total accumulated costs of this plan to the Company based on the number of allocated employees. The Company has no legal obligation for benefits under this plan.

The Company participates in a stock incentive compensation plan, sponsored by Elevance Health, providing incentive awards to non-employee directors and employees, consisting of Elevance Health stock options, restricted stock, restricted stock units, stock appreciation rights, performance shares, and performance units. Elevance Health allocates a share of the total share-based compensation expense of this plan to the Company based on the number of allocated employees. The Company has no legal obligation for benefits under this plan.

NOTES TO FINANCIAL STATEMENTS

During 2022 and 2021, the Company was allocated the following costs or (credits) for these retirement benefits:

	<u>2022</u>		<u>2021</u>
Deferred compensation plan	\$ 98	\$	116
Defined contribution plan	10,068		8,745
Stock incentive compensation plan	5,456		2,401

H. Post Employment Benefits and Compensated Absences

Not applicable.

I. Impact of Medicare Modernization Act on Postretirement Benefits (INT 04-17)

Not applicable.

13. Capital and Surplus, Shareholders' Dividend Restrictions and Quasi-Reorganizations

A. Outstanding Shares

As of December 31, 2022, the Company has 1,000,000 shares of \$1 par value common stock authorized, issued and outstanding.

B. Preferred Stock

The Company has no preferred stock outstanding.

C. Dividend Restrictions

Under Maine law, the Company is limited in the amount of dividends that can be declared without regulatory approval. The Superintendent of Insurance must approve any dividend that, together with all dividends declared during the preceding twelve months, exceeds the greater of the net gain from operations for the twelve-month period ending December 31 of the preceding year or 10% of the Company's surplus to policyholders as of December 31 of the preceding year as long as unassigned surplus is positive. Also, any dividend paid from other than unassigned funds will need the approval of the Superintendent of Insurance.

D. Dividends Paid

See Footnote 10B.

E. Maximum Ordinary Dividend During 2023

Within the limitations of (C) above, the Company may not pay dividends during 2023 without prior approval.

F. Unassigned Surplus Restrictions

Unassigned surplus funds are not restricted at December 31, 2022.

G. Mutual Surplus Advances

Not applicable.

NOTES TO FINANCIAL STATEMENTS

H. Company Stock Held for Special Purpose

There are no shares of stock held for special purposes at December 31, 2022.

I. Changes in Special Surplus Funds

There are no special surplus funds at December 31, 2022.

J. Changes in Unassigned Funds

There was no portion of unassigned funds represented by cumulative unrealized investment gains and losses at December 31, 2022.

K. Surplus Notes

The Company has not issued any surplus notes or debentures or similar obligations.

L. Restatement due to Prior Quasi-reorganizations

The Company had no restatements due to prior quasi-reorganizations.

M. Quasi-reorganizations over Prior 10 Years

The Company has not been involved in a quasi-reorganization during the past 10 years.

14. Liabilities, Contingencies and Assessments

A. Contingent Commitments

The Company had no contingent commitments at December 31, 2022 or 2021.

B. Assessments

(1) The Company is subject to guaranty fund and other assessments by the state in which it writes business. Guaranty fund assessments are accrued at the time of insolvencies. Other assessments are accrued either at the time of the assessment or at the time the losses are incurred.

(2) Not applicable.

(3) Not applicable.

C. Gain Contingencies

The Company has no gain contingencies at December 31, 2022 or 2021.

D. Claims-Related Extra Contractual Obligation and the Bad Faith Losses Stemming From Lawsuits

Not applicable.

E. Joint and Several Liabilities

Not applicable.

NOTES TO FINANCIAL STATEMENTS

F. All Other Contingencies

Other Contingencies

From time to time, the Company and certain of its subsidiaries are parties to various legal proceedings, many of which involve claims for coverage encountered in the ordinary course of business. The Company, like Health Maintenance Organizations (“HMOs”) and health insurers generally, exclude certain healthcare and other services from coverage under their HMO, Preferred Provider Organizations and other plans. The Company is, in the ordinary course of business, subject to the claims of their enrollees arising out of decisions to restrict or deny reimbursement for uncovered services. The loss of even one such claim, if it results in a significant punitive damage award, could have a material adverse effect on the Company. In addition, the risk of potential liability under punitive damage theories may increase significantly the difficulty of obtaining reasonable reimbursement of coverage claims.

The Company is involved in pending and threatened litigation of the character incidental to the business transacted, arising out of its operations and is from time to time involved as a party in various governmental investigations, audits, reviews and administrative proceedings. These investigations, audits and reviews and administrative proceedings include routine and special investigations by state insurance departments, state attorneys general, the U.S. Attorney General and subcommittees of the U.S. Congress. Such investigations, audits, reviews and administrative proceedings could result in the imposition of civil or criminal fines, penalties, other sanctions and additional rules, regulations or other restrictions on the Company’s business operations. Any liability that may result from any one of these actions, or in the aggregate, could have a material adverse effect on the Company’s financial position or results of operations.

The Company has no other known material contingencies.

Provisions for uncollectible amounts

At December 31, 2022 and 2021, the Company reported admitted assets of \$238,506 and \$59,756, respectively, in premiums receivable and amounts receivable relating to uninsured plans. Based upon the Company’s experience, any uncollectible receivables are not expected to exceed \$1,833 that was nonadmitted at December 31, 2022; therefore, no additional provision for uncollectible amounts has been recorded. The potential for any additional loss is not believed to be material to the Company’s financial condition.

15. Leases

A. Lessee Operating Lease

The Company has no lessee leasing arrangements.

B. Lessor Leases

The Company has not entered into any operating leases.

NOTES TO FINANCIAL STATEMENTS

16. Information About Financial Instruments With Off-Balance Sheet Risk and Financial Instruments With Concentrations of Credit Risk

The Company has no significant financial instruments with off-balance sheet risk.

Financial instruments that potentially subject the Company to concentrations of credit risk consist primarily of investment securities. All investment securities are managed by professional investment managers within policies authorized by the board of directors. Such policies limit the amounts that may be invested in any one issuer and prescribe certain investee company criteria. As of December 31, 2022, there were no significant concentrations.

17. Sale, Transfer and Servicing of Financial Assets and Extinguishments of Liabilities

A. Transfers of Receivables Reported as Sales

Not applicable at December 31, 2022 and 2021.

B. Transfer and Servicing of Financial Assets

Not applicable at December 31, 2022 and 2021.

C. Wash Sales

(1) In the course of the Company's asset management, securities may be sold and reacquired within 30 days of the sale date to enhance the yield on the investments.

(2) At December 31, 2022 and 2021, there were no wash sales involving securities with an NAIC designation of 3 or below or unrated.

18. Gain or Loss to the Reporting Entity from Uninsured Plans and the Uninsured Portion of Partially Insured Plans

A. Administrative Services Only ("ASO") Plans

Not applicable at December 31, 2022.

B. Administrative Services Contract ("ASC") Plans

Not applicable at December 31, 2022.

C. Medicare or Other Similarly Structured Cost-Based Reimbursement Contract

Not applicable at December 31, 2022 and 2021.

19. Direct Premium Written/Produced by Managing General Agents/Third Party Administrators

No premiums were written by managing general agents or third party administrators during the years ended December 31, 2022 and 2021.

20. Fair Value Measurements

A.

(1) There are no assets or liabilities measured at fair value as of December 31, 2022 and 2021.

(2) There are no investments in Level 3 as of December 31, 2022 and 2021.

NOTES TO FINANCIAL STATEMENTS

(3) The Company’s policy is to recognize transfers between Levels, if any, as of the beginning of the reporting period.

(4) Fair values of bonds are based on quoted market prices, where available. These fair values are obtained primarily from third party pricing services, which generally use Level 1 or Level 2 inputs, for the determination of fair value to facilitate fair value measurements and disclosures. Level 2 securities primarily include United States government securities, corporate securities, securities from states, municipalities and political subdivisions, mortgage-backed securities and certain other asset-backed securities. For securities not actively traded, the pricing services may use quoted market prices of comparable instruments or discounted cash flow analyses, incorporating inputs that are currently observable in the markets for similar securities. Inputs that are often used in the valuation methodologies include, but are not limited to, broker quotes, benchmark yields, credit spreads, default rates and prepayment speeds. The Company has controls in place to review the pricing services' qualifications and procedures used to determine fair values. In addition, the Company periodically reviews the pricing services' pricing methodologies, data sources and pricing inputs to ensure the fair values obtained are reasonable.

Certain bonds, primarily corporate debt securities, are designated Level 3. For these securities, the valuation methodologies may incorporate broker quotes or discounted cash flow analyses using assumptions for inputs such as expected cash flows, benchmark yields, credit spreads, default rates and prepayment speeds that are not observable in the markets.

There have been no significant changes in the valuation techniques during the current period.

B. Fair Value Measurements Under Other Accounting Pronouncements

Not applicable at December 31, 2022 and 2021.

C. Financial Instruments

Type of Financial Instrument	Aggregate Fair Value	Admitted Assets	(Level 1)	(Level 2)	(Level 3)	Net Asset Value (NAV)	Not Practicable (Carrying Value)
Bonds	\$ 100,174	\$ 109,666	\$ —	\$ 100,174	\$ —	\$ —	\$ —

D. Not Practicable to Estimate Fair Value

There are no financial instruments that were not practicable to estimate fair value.

E. Investments Measured at Net Asset Value

The Company has no investments measured at net asset value.

21. Other Items

A. Unusual or Infrequent Items

Not applicable at December 31, 2022 and 2021.

The Maine Bureau of Insurance requires that the Company maintain a risk-based capital at no less than the greater of 375% of authorized control level risk-based capital or the minimum surplus requirements of 24-A M.R.S Section 410.

NOTES TO FINANCIAL STATEMENTS

B. Troubled Debt Restructuring: Debtors

Not applicable at December 31, 2022 and 2021.

C. Other Disclosures

Assets in the amount of \$109,666 and \$111,445 at December 31, 2022 and 2021, respectively, were on deposit with government authorities or trustees as required by law.

The Maine Bureau of Insurance requires that the Company maintain a risk-based capital at no less than the greater of 375% of authorized control level risk-based capital or the minimum surplus requirements of 24-A M.R.S Section 410.

D. Business Interruption Insurance Recoveries

The Company has reported no recoveries for business interruption for the years ended December 31, 2022 and 2021.

E. State Transferable and Non-Transferable Tax Credits

The Company did not have state transferable or non-transferable tax credits at December 31, 2022 and 2021.

F. Subprime Mortgage-Related Risk Exposure

- (1) The Company's investment strategy of providing safety and preservation of capital, sufficient liquidity to meet cash flow requirements and the attainment of a competitive after-tax investment return is supported by a well diversified portfolio consisting of many different types of investments. The portion of the Company's investment portfolio with subprime mortgage-related risk exposure is relatively small in comparison to the overall investment portfolio, and consists mainly of investment grade securities with no exposure to collateralized debt obligations. All mortgage related investments are monitored closely as part of the quarterly investment review performed by the Elevance Health Investment Impairment Review Committee.
- (2) The Company did not carry investments in subprime mortgage loans in its portfolio at December 31, 2022 or 2021.
- (3) The Company did not have subprime mortgage-related risk exposure at December 31, 2022 or 2021.
- (4) The Company did not underwrite Mortgage Guaranty or Financial Guaranty insurance coverage at December 31, 2022 or 2021.

G. Retained Assets

The Company does not have retained assets at December 31, 2022 and 2021.

H. Insurance-Linked Securities Contracts

Not applicable.

I. The Amount That Could Be Realized on Life Insurance Where the Reporting Entity is Owner and Beneficiary or Has Otherwise Obtained Rights to Control the Policy

Not applicable.

NOTES TO FINANCIAL STATEMENTS

22. Events Subsequent

Subsequent events have been considered through February 24, 2022 for the statutory statement issued on February 27, 2022. There were no events occurring subsequent to December 31, 2022 requiring recognition or disclosure.

23. Reinsurance

A. Ceded Reinsurance Report

Section 1 - General Interrogatories

- (1) Are any of the reinsurers that are listed in Schedule S as non-affiliated owned in excess of 10% or controlled, either directly or indirectly, by the Company or by any representative, officer, trustee, or director of the Company?

Yes () No (X)

If yes, give full details.

- (2) Have any policies issued by the Company been reinsured with a company chartered in a country other than the United States (excluding U.S. Branches of such companies) that is owned in excess of 10% or controlled, directly or indirectly, by an insured, a beneficiary, a creditor or an insured or any other person not primarily engaged in the insurance business?

Yes () No (X)

If yes, give full details.

Section 2 - Ceded Reinsurance Report - Part A

- (1) Does the Company have any reinsurance agreements in effect under which the reinsurer may unilaterally cancel any reinsurance for reasons other than for nonpayment of premium or other similar credits?

Yes () No (X)

If yes, give full details.

- (2) Does the reporting entity have any reinsurance agreements in effect such that the amount of losses paid or accrued through the statement date may result in a payment to the reinsurer of amounts that, in aggregate and allowing for offset of mutual credits from other reinsurance agreements with the same reinsurer, exceed the total direct premium collected under the reinsured policies?

Yes () No (X)

If yes, give full details.

Section 3 - Ceded Reinsurance Report - Part B

- (1) What is the estimated amount of the aggregate reduction in surplus, (for agreements other than those under which the reinsurer may unilaterally cancel for reasons other than for nonpayment of premium or other similar credits that are reflected in Section 2 above) of termination of ALL reinsurance agreements, by either party, as of the date of this statement? Where necessary, the Company may consider the current or anticipated experience of the business reinsured in making this estimate.

NOTES TO FINANCIAL STATEMENTS

- (2) Have any new agreements been executed or existing agreements amended, since January 1 of the year of this statement, to include policies or contracts that were in force or which had existing reserves established by the Company as of the effective date of the agreement?

Yes () No (X)

If yes, give full details.

B. Uncollectible Reinsurance

The Company has no uncollectible reinsurance at December 31, 2022 and 2021.

C. Commutation of Ceded Reinsurance

The Company has not commuted ceded reinsurance during 2022 and 2021.

D. Certified Reinsurer Rating Downgraded or Status Subject Revocation

The Company has no downgraded certified reinsurer ratings or status subject to revocations during 2022 and 2021.

E. Reinsurance Credit

(1) Not applicable.

(2) Not applicable.

(3) Not applicable.

(4) Not applicable.

(5) Not applicable.

24. Retrospectively Rated Contracts & Contracts Subject to Redetermination

A. The Company sells accident and health policies for which the premiums vary based on loss experience. The Company estimates retrospective premium adjustments through the review of each retrospectively rated account, comparing the claim development with that anticipated in the policy contracts.

B. The Company records accrued retrospective premium as an adjustment to earned premium.

C. 100% of the net premium written is subject to retrospective rating features.

D. Not applicable.

E. Risk-Sharing Provisions of the ACA

(1) Did the reporting entity write accident and health insurance premium that is subject to the Affordable Care Act risk-sharing provisions (YES/NO)? No

(2) Impact of Risk-Sharing Provisions of the Affordable Care Act on Admitted Assets, Liabilities and Revenue for the Current Year

NOTES TO FINANCIAL STATEMENTS

Not applicable.

- (3) Roll-forward of prior year ACA risk-sharing provisions for the following asset (gross of any nonadmission) and liability balances, along with the reasons for adjustments to prior year balance.

Not applicable.

- (4) Roll-forward of Risk Corridors Asset and Liability Balances by Program Benefit Year.

Not applicable.

- (5) ACA Risk Corridors Receivable as of Reporting Date.

Not applicable.

25. Change in Incurred Claims and Claim Adjustment Expenses

A. The estimated cost of claims and claim adjustment expense attributable to insured events of prior years increased by \$110,240 during 2022. This is approximately 47.7% of unpaid claims and claim adjustment expenses of \$231,241 as of December 31, 2021. The deficiency reflects the increases in estimated claims and claims adjustment expenses as a result of claims payment during the year, and as additional information is received regarding claims incurred prior to 2022. Recent claim development trends are also taken into account in evaluating the overall adequacy of unpaid claims and unpaid claim adjustment expense.

B. There were no significant changes in methodologies and assumptions used in calculating the liability for unpaid losses and loss adjustment expenses.

26. Intercompany Pooling Arrangements

Not applicable at December 31, 2022 and 2021.

27. Structured Settlements

Not applicable at December 31, 2022 and 2021.

28. Health Care Receivables

A. Pharmaceutical Rebate Receivables

Quarter	Estimated Pharmacy Rebates as Reported on Financial Statements	Pharmacy Rebates as Billed or Otherwise Confirmed	Actual Rebates Received Within 90 Days of Billing	Actual Rebates Received Within 91 to 180 Days of Billing	Actual Rebates Received More Than 180 Days After Billing
12/31/2022	\$ 40,623	\$ 170,651	\$ 130,028	\$ —	
9/30/2022	43,784	142,631	130,485	—	
6/30/2022	27,665	135,075	120,854	14,221	
3/31/2022	28,389	92,365	87,894	4,472	
12/31/2021	\$ 7,193	\$ 38,063	\$ 36,131	\$ 1,931	\$ —
9/30/2021	4,697	31,878	30,932	946	—
6/30/2021	8,067	28,732	28,591	141	—
3/31/2021	12,186	27,523	27,523	—	—

NOTES TO FINANCIAL STATEMENTS

B. Risk Sharing Receivables

Not applicable at December 31, 2021.

29. Participating Policies

Not applicable at December 31, 2022 and 2021.

30. Premium Deficiency Reserves

1. Liability carried for premium deficiency reserves	\$	<u>2,034,244</u>
2. Date of the most recent evaluation of this liability		<u>December 31, 2022</u>
3. Was anticipated investment income utilized in the calculation?	Yes	<u> </u> No <u> X </u>

The Company recorded premium deficiency reserves of \$605,420 at December 31, 2021.

31. Anticipated Salvage and Subrogation

Not applicable.

GENERAL INTERROGATORIES

PART 1 - COMMON INTERROGATORIES GENERAL

- 1.1 Is the reporting entity a member of an Insurance Holding Company System consisting of two or more affiliated persons, one or more of which is an insurer? Yes [X] No []
If yes, complete Schedule Y, Parts 1, 1A, 2 and 3.
- 1.2 If yes, did the reporting entity register and file with its domiciliary State Insurance Commissioner, Director or Superintendent or with such regulatory official of the state of domicile of the principal insurer in the Holding Company System, a registration statement providing disclosure substantially similar to the standards adopted by the National Association of Insurance Commissioners (NAIC) in its Model Insurance Holding Company System Regulatory Act and model regulations pertaining thereto, or is the reporting entity subject to standards and disclosure requirements substantially similar to those required by such Act and regulations? Yes [X] No [] N/A []
- 1.3 State Regulating? Maine
- 1.4 Is the reporting entity publicly traded or a member of a publicly traded group? Yes [X] No []
- 1.5 If the response to 1.4 is yes, provide the CIK (Central Index Key) code issued by the SEC for the entity/group. 0001156039
- 2.1 Has any change been made during the year of this statement in the charter, by-laws, articles of incorporation, or deed of settlement of the reporting entity? Yes [] No [X]
- 2.2 If yes, date of change:
- 3.1 State as of what date the latest financial examination of the reporting entity was made or is being made. 12/31/2022
- 3.2 State the as of date that the latest financial examination report became available from either the state of domicile or the reporting entity. This date should be the date of the examined balance sheet and not the date the report was completed or released.
- 3.3 State as of what date the latest financial examination report became available to other states or the public from either the state of domicile or the reporting entity. This is the release date or completion date of the examination report and not the date of the examination (balance sheet date).
- 3.4 By what department or departments?
State of Maine Bureau of Insurance
- 3.5 Have all financial statement adjustments within the latest financial examination report been accounted for in a subsequent financial statement filed with Departments? Yes [] No [] N/A [X]
- 3.6 Have all of the recommendations within the latest financial examination report been complied with? Yes [] No [] N/A [X]
- 4.1 During the period covered by this statement, did any agent, broker, sales representative, non-affiliated sales/service organization or any combination thereof under common control (other than salaried employees of the reporting entity), receive credit or commissions for or control a substantial part (more than 20 percent of any major line of business measured on direct premiums) of:
4.11 sales of new business? Yes [] No [X]
4.12 renewals? Yes [] No [X]
- 4.2 During the period covered by this statement, did any sales/service organization owned in whole or in part by the reporting entity or an affiliate, receive credit or commissions for or control a substantial part (more than 20 percent of any major line of business measured on direct premiums) of:
4.21 sales of new business? Yes [] No [X]
4.22 renewals? Yes [] No [X]
- 5.1 Has the reporting entity been a party to a merger or consolidation during the period covered by this statement? Yes [] No [X]
If yes, complete and file the merger history data file with the NAIC.
- 5.2 If yes, provide the name of the entity, NAIC Company Code, and state of domicile (use two letter state abbreviation) for any entity that has ceased to exist as a result of the merger or consolidation.

1 Name of Entity	2 NAIC Company Code	3 State of Domicile

- 6.1 Has the reporting entity had any Certificates of Authority, licenses or registrations (including corporate registration, if applicable) suspended or revoked by any governmental entity during the reporting period? Yes [] No [X]
- 6.2 If yes, give full information:
- 7.1 Does any foreign (non-United States) person or entity directly or indirectly control 10% or more of the reporting entity? Yes [] No [X]
- 7.2 If yes,
7.21 State the percentage of foreign control; %
7.22 State the nationality(s) of the foreign person(s) or entity(s); or if the entity is a mutual or reciprocal, the nationality of its manager or attorney-in-fact and identify the type of entity(s) (e.g., individual, corporation, government, manager or attorney-in-fact).

1 Nationality	2 Type of Entity

GENERAL INTERROGATORIES

- 8.1 Is the company a subsidiary of a depository institution holding company (DIHC) or a DIHC itself, regulated by the Federal Reserve Board? Yes [] No [X]
- 8.2 If the response to 8.1 is yes, please identify the name of the DIHC.
.....
- 8.3 Is the company affiliated with one or more banks, thrifts or securities firms? Yes [] No [X]
- 8.4 If response to 8.3 is yes, please provide below the names and location (city and state of the main office) of any affiliates regulated by a federal regulatory services agency [i.e. the Federal Reserve Board (FRB), the Office of the Comptroller of the Currency (OCC), the Federal Deposit Insurance Corporation (FDIC) and the Securities Exchange Commission (SEC)] and identify the affiliate's primary federal regulator.

1 Affiliate Name	2 Location (City, State)	3 FRB	4 OCC	5 FDIC	6 SEC

- 8.5 Is the reporting entity a depository institution holding company with significant insurance operations as defined by the Board of Governors of Federal Reserve System or a subsidiary of the depository institution holding company? Yes [] No [X]
- 8.6 If response to 8.5 is no, is the reporting entity a company or subsidiary of a company that has otherwise been made subject to the Federal Reserve Board's capital rule? Yes [] No [X] N/A []
9. What is the name and address of the independent certified public accountant or accounting firm retained to conduct the annual audit?
Ernst & Young LLP, 111 Monument Circle, Suite 4000, Indianapolis, IN 46204
- 10.1 Has the insurer been granted any exemptions to the prohibited non-audit services provided by the certified independent public accountant requirements as allowed in Section 7H of the Annual Financial Reporting Model Regulation (Model Audit Rule), or substantially similar state law or regulation? Yes [] No [X]
- 10.2 If the response to 10.1 is yes, provide information related to this exemption:
.....
- 10.3 Has the insurer been granted any exemptions related to the other requirements of the Annual Financial Reporting Model Regulation as allowed for in Section 18A of the Model Regulation, or substantially similar state law or regulation? Yes [] No [X]
- 10.4 If the response to 10.3 is yes, provide information related to this exemption:
.....
- 10.5 Has the reporting entity established an Audit Committee in compliance with the domiciliary state insurance laws? Yes [X] No [] N/A []
- 10.6 If the response to 10.5 is no or n/a, please explain
.....
11. What is the name, address and affiliation (officer/employee of the reporting entity or actuary/consultant associated with an actuarial consulting firm) of the individual providing the statement of actuarial opinion/certification?
Claudia Ellis, ASA, MAA, Director & Actuary II (employee): 2455 Mossy Branch Rd, Snellville, GA 30078
- 12.1 Does the reporting entity own any securities of a real estate holding company or otherwise hold real estate indirectly? Yes [] No [X]
- 12.11 Name of real estate holding company ...
- 12.12 Number of parcels involved
- 12.13 Total book/adjusted carrying value \$
- 12.2 If, yes provide explanation:
.....
- 13. FOR UNITED STATES BRANCHES OF ALIEN REPORTING ENTITIES ONLY:**
- 13.1 What changes have been made during the year in the United States manager or the United States trustees of the reporting entity?
.....
- 13.2 Does this statement contain all business transacted for the reporting entity through its United States Branch on risks wherever located? Yes [] No []
- 13.3 Have there been any changes made to any of the trust indentures during the year? Yes [] No []
- 13.4 If answer to (13.3) is yes, has the domiciliary or entry state approved the changes? Yes [] No [] N/A []
- 14.1 Are the senior officers (principal executive officer, principal financial officer, principal accounting officer or controller, or persons performing similar functions) of the reporting entity subject to a code of ethics, which includes the following standards? Yes [X] No []
- a. Honest and ethical conduct, including the ethical handling of actual or apparent conflicts of interest between personal and professional relationships;
- b. Full, fair, accurate, timely and understandable disclosure in the periodic reports required to be filed by the reporting entity;
- c. Compliance with applicable governmental laws, rules and regulations;
- d. The prompt internal reporting of violations to an appropriate person or persons identified in the code; and
- e. Accountability for adherence to the code.
- 14.11 If the response to 14.1 is No, please explain:
.....
- 14.2 Has the code of ethics for senior managers been amended? Yes [X] No []
- 14.21 If the response to 14.2 is yes, provide information related to amendment(s).
Code amended to reflect name change from Anthem to Elevance Health.
- 14.3 Have any provisions of the code of ethics been waived for any of the specified officers? Yes [] No [X]
- 14.31 If the response to 14.3 is yes, provide the nature of any waiver(s).
.....

GENERAL INTERROGATORIES

- 15.1 Is the reporting entity the beneficiary of a Letter of Credit that is unrelated to reinsurance where the issuing or confirming bank is not on the SVO Bank List? Yes [] No [X]
- 15.2 If the response to 15.1 is yes, indicate the American Bankers Association (ABA) Routing Number and the name of the issuing or confirming bank of the Letter of Credit and describe the circumstances in which the Letter of Credit is triggered.

1 American Bankers Association (ABA) Routing Number	2 Issuing or Confirming Bank Name	3 Circumstances That Can Trigger the Letter of Credit	4 Amount

BOARD OF DIRECTORS

16. Is the purchase or sale of all investments of the reporting entity passed upon either by the board of directors or a subordinate committee thereof? Yes [X] No []
17. Does the reporting entity keep a complete permanent record of the proceedings of its board of directors and all subordinate committees thereof? Yes [X] No []
18. Has the reporting entity an established procedure for disclosure to its board of directors or trustees of any material interest or affiliation on the part of any of its officers, directors, trustees or responsible employees that is in conflict or is likely to conflict with the official duties of such person? Yes [X] No []

FINANCIAL

19. Has this statement been prepared using a basis of accounting other than Statutory Accounting Principles (e.g., Generally Accepted Accounting Principles)? Yes [] No [X]
- 20.1 Total amount loaned during the year (inclusive of Separate Accounts, exclusive of policy loans):
- 20.11 To directors or other officers.....\$
 - 20.12 To stockholders not officers.....\$
 - 20.13 Trustees, supreme or grand (Fraternal Only)\$
- 20.2 Total amount of loans outstanding at the end of year (inclusive of Separate Accounts, exclusive of policy loans):
- 20.21 To directors or other officers.....\$
 - 20.22 To stockholders not officers.....\$
 - 20.23 Trustees, supreme or grand (Fraternal Only)\$
- 21.1 Were any assets reported in this statement subject to a contractual obligation to transfer to another party without the liability for such obligation being reported in the statement? Yes [] No [X]
- 21.2 If yes, state the amount thereof at December 31 of the current year:
- 21.21 Rented from others.....\$
 - 21.22 Borrowed from others.....\$
 - 21.23 Leased from others\$
 - 21.24 Other\$
- 22.1 Does this statement include payments for assessments as described in the Annual Statement Instructions other than guaranty fund or guaranty association assessments? Yes [] No [X]
- 22.2 If answer is yes:
- 22.21 Amount paid as losses or risk adjustment \$
 - 22.22 Amount paid as expenses\$
 - 22.23 Other amounts paid\$
- 23.1 Does the reporting entity report any amounts due from parent, subsidiaries or affiliates on Page 2 of this statement? Yes [] No [X]
- 23.2 If yes, indicate any amounts receivable from parent included in the Page 2 amount:\$
- 24.1 Does the insurer utilize third parties to pay agent commissions in which the amounts advanced by the third parties are not settled in full within 90 days? Yes [] No [X]
- 24.2 If the response to 24.1 is yes, identify the third-party that pays the agents and whether they are a related party.

Name of Third-Party	Is the Third-Party Agent a Related Party (Yes/No)

INVESTMENT

- 25.01 Were all the stocks, bonds and other securities owned December 31 of current year, over which the reporting entity has exclusive control, in the actual possession of the reporting entity on said date? (other than securities lending programs addressed in 25.03)..... Yes [X] No []

GENERAL INTERROGATORIES

- 25.02 If no, give full and complete information relating thereto
.....
- 25.03 For securities lending programs, provide a description of the program including value for collateral and amount of loaned securities, and whether collateral is carried on or off-balance sheet. (an alternative is to reference Note 17 where this information is also provided)
.....
- 25.04 For the reporting entity's securities lending program, report amount of collateral for conforming programs as outlined in the Risk-Based Capital Instructions. \$
- 25.05 For the reporting entity's securities lending program, report amount of collateral for other programs. \$
- 25.06 Does your securities lending program require 102% (domestic securities) and 105% (foreign securities) from the counterparty at the outset of the contract? Yes [] No [] N/A [X]
- 25.07 Does the reporting entity non-admit when the collateral received from the counterparty falls below 100%? Yes [] No [] N/A [X]
- 25.08 Does the reporting entity or the reporting entity's securities lending agent utilize the Master Securities lending Agreement (MSLA) to conduct securities lending? Yes [] No [] N/A [X]
- 25.09 For the reporting entity's securities lending program state the amount of the following as of December 31 of the current year:
- 25.091 Total fair value of reinvested collateral assets reported on Schedule DL, Parts 1 and 2. \$ 0
- 25.092 Total book adjusted/carrying value of reinvested collateral assets reported on Schedule DL, Parts 1 and 2 \$ 0
- 25.093 Total payable for securities lending reported on the liability page. \$ 0

- 26.1 Were any of the stocks, bonds or other assets of the reporting entity owned at December 31 of the current year not exclusively under the control of the reporting entity or has the reporting entity sold or transferred any assets subject to a put option contract that is currently in force? (Exclude securities subject to Interrogatory 21.1 and 25.03). Yes [X] No []
- 26.2 If yes, state the amount thereof at December 31 of the current year:
- 26.21 Subject to repurchase agreements \$
- 26.22 Subject to reverse repurchase agreements \$
- 26.23 Subject to dollar repurchase agreements \$
- 26.24 Subject to reverse dollar repurchase agreements \$
- 26.25 Placed under option agreements \$
- 26.26 Letter stock or securities restricted as to sale - excluding FHLB Capital Stock \$
- 26.27 FHLB Capital Stock \$
- 26.28 On deposit with states \$ 109,666
- 26.29 On deposit with other regulatory bodies \$
- 26.30 Pledged as collateral - excluding collateral pledged to an FHLB \$
- 26.31 Pledged as collateral to FHLB - including assets backing funding agreements \$
- 26.32 Other \$

26.3 For category (26.26) provide the following:

1 Nature of Restriction	2 Description	3 Amount
.....

- 27.1 Does the reporting entity have any hedging transactions reported on Schedule DB? Yes [] No [X]
- 27.2 If yes, has a comprehensive description of the hedging program been made available to the domiciliary state? Yes [] No [] N/A []
If no, attach a description with this statement.

LINES 27.3 through 27.5: FOR LIFE/FRATERNAL REPORTING ENTITIES ONLY:

- 27.3 Does the reporting entity utilize derivatives to hedge variable annuity guarantees subject to fluctuations as a result of interest rate sensitivity? . Yes [] No [X]
- 27.4 If the response to 27.3 is YES, does the reporting entity utilize:
- 27.41 Special accounting provision of SSAP No. 108 Yes [] No []
- 27.42 Permitted accounting practice Yes [] No []
- 27.43 Other accounting guidance Yes [] No []
- 27.5 By responding YES to 27.41 regarding utilizing the special accounting provisions of SSAP No. 108, the reporting entity attests to the following: Yes [] No []
- The reporting entity has obtained explicit approval from the domiciliary state.
 - Hedging strategy subject to the special accounting provisions is consistent with the requirements of VM-21.
 - Actuarial certification has been obtained which indicates that the hedging strategy is incorporated within the establishment of VM-21 reserves and provides the impact of the hedging strategy within the Actuarial Guideline Conditional Tail Expectation Amount.
 - Financial Officer Certification has been obtained which indicates that the hedging strategy meets the definition of a Clearly Defined Hedging Strategy within VM-21 and that the Clearly Defined Hedging Strategy is the hedging strategy being used by the company in its actual day-to-day risk mitigation efforts.
- 28.1 Were any preferred stocks or bonds owned as of December 31 of the current year mandatorily convertible into equity, or, at the option of the issuer, convertible into equity? Yes [] No [X]
- 28.2 If yes, state the amount thereof at December 31 of the current year. \$
29. Excluding items in Schedule E - Part 3 - Special Deposits, real estate, mortgage loans and investments held physically in the reporting entity's offices, vaults or safety deposit boxes, were all stocks, bonds and other securities, owned throughout the current year held pursuant to a custodial agreement with a qualified bank or trust company in accordance with Section 1, III - General Examination Considerations, F. Outsourcing of Critical Functions, Custodial or Safekeeping Agreements of the NAIC Financial Condition Examiners Handbook?..... Yes [X] No []
- 29.01 For agreements that comply with the requirements of the NAIC Financial Condition Examiners Handbook, complete the following:

1 Name of Custodian(s)	2 Custodian's Address
JP Morgan Chase Bank, N.A	383 Madison Ave, New York, NY 10179

GENERAL INTERROGATORIES

29.02 For all agreements that do not comply with the requirements of the NAIC Financial Condition Examiners Handbook, provide the name, location and a complete explanation:

1 Name(s)	2 Location(s)	3 Complete Explanation(s)
.....

29.03 Have there been any changes, including name changes, in the custodian(s) identified in 29.01 during the current year?..... Yes [] No [X]

29.04 If yes, give full and complete information relating thereto:

1 Old Custodian	2 New Custodian	3 Date of Change	4 Reason
.....

29.05 Investment management – Identify all investment advisors, investment managers, broker/dealers, including individuals that have the authority to make investment decisions on behalf of the reporting entity. For assets that are managed internally by employees of the reporting entity, note as such. ["...that have access to the investment accounts"; "...handle securities"]

1 Name of Firm or Individual	2 Affiliation
Loomis, Sayles & Company, LP	U.....

29.0597 For those firms/individuals listed in the table for Question 29.05, do any firms/individuals unaffiliated with the reporting entity (i.e. designated with a "U") manage more than 10% of the reporting entity's invested assets?..... Yes [] No [X]

29.0598 For firms/individuals unaffiliated with the reporting entity (i.e. designated with a "U") listed in the table for Question 29.05, does the total assets under management aggregate to more than 50% of the reporting entity's invested assets?..... Yes [] No [X]

29.06 For those firms or individuals listed in the table for 29.05 with an affiliation code of "A" (affiliated) or "U" (unaffiliated), provide the information for the table below.

1	2	3	4	5
Central Registration Depository Number	Name of Firm or Individual	Legal Entity Identifier (LEI)	Registered With	Investment Management Agreement (IMA) Filed
105377	Loomis, Sayles & Company, LP	JIZPN2RX3UMNOYID1313	Securities Exchange Commission	NO.....

30.1 Does the reporting entity have any diversified mutual funds reported in Schedule D, Part 2 (diversified according to the Securities and Exchange Commission (SEC) in the Investment Company Act of 1940 [Section 5(b)(1)])? Yes [] No [X]

30.2 If yes, complete the following schedule:

1 CUSIP #	2 Name of Mutual Fund	3 Book/Adjusted Carrying Value
30.2999 - Total	0

30.3 For each mutual fund listed in the table above, complete the following schedule:

1	2	3	4
Name of Mutual Fund (from above table)	Name of Significant Holding of the Mutual Fund	Amount of Mutual Fund's Book/Adjusted Carrying Value Attributable to the Holding	Date of Valuation
.....

GENERAL INTERROGATORIES

31. Provide the following information for all short-term and long-term bonds and all preferred stocks. Do not substitute amortized value or statement value for fair value.

	1	2	3
	Statement (Admitted) Value	Fair Value	Excess of Statement over Fair Value (-), or Fair Value over Statement (+)
31.1 Bonds	109,666	100,174	(9,492)
31.2 Preferred stocks	0		0
31.3 Totals	109,666	100,174	(9,492)

31.4 Describe the sources or methods utilized in determining the fair values:

Fair values were obtained from third-party pricing sources. If a security was not priced by a third-party pricing source, internal analytical systems or broker quotes were utilized.

32.1 Was the rate used to calculate fair value determined by a broker or custodian for any of the securities in Schedule D? Yes [] No [X]

32.2 If the answer to 32.1 is yes, does the reporting entity have a copy of the broker's or custodian's pricing policy (hard copy or electronic copy) for all brokers or custodians used as a pricing source? Yes [] No []

32.3 If the answer to 32.2 is no, describe the reporting entity's process for determining a reliable pricing source for purposes of disclosure of fair value for Schedule D:
.....

33.1 Have all the filing requirements of the Purposes and Procedures Manual of the NAIC Investment Analysis Office been followed? Yes [X] No []

33.2 If no, list exceptions:
.....

34. By self-designating 5GI securities, the reporting entity is certifying the following elements of each self-designated 5GI security:
 a. Documentation necessary to permit a full credit analysis of the security does not exist or an NAIC CRP credit rating for an FE or PL security is not available.
 b. Issuer or obligor is current on all contracted interest and principal payments.
 c. The insurer has an actual expectation of ultimate payment of all contracted interest and principal.
 Has the reporting entity self-designated 5GI securities? Yes [] No [X]

35. By self-designating PLGI securities, the reporting entity is certifying the following elements of each self-designated PLGI security:
 a. The security was purchased prior to January 1, 2018.
 b. The reporting entity is holding capital commensurate with the NAIC Designation reported for the security.
 c. The NAIC Designation was derived from the credit rating assigned by an NAIC CRP in its legal capacity as a NRSRO which is shown on a current private letter rating held by the insurer and available for examination by state insurance regulators.
 d. The reporting entity is not permitted to share this credit rating of the PL security with the SVO.
 Has the reporting entity self-designated PLGI securities? Yes [] No [X]

36. By assigning FE to a Schedule BA non-registered private fund, the reporting entity is certifying the following elements of each self-designated FE fund:
 a. The shares were purchased prior to January 1, 2019.
 b. The reporting entity is holding capital commensurate with the NAIC Designation reported for the security.
 c. The security had a public credit rating(s) with annual surveillance assigned by an NAIC CRP in its legal capacity as an NRSRO prior to January 1, 2019.
 d. The fund only or predominantly holds bonds in its portfolio.
 e. The current reported NAIC Designation was derived from the public credit rating(s) with annual surveillance assigned by an NAIC CRP in its legal capacity as an NRSRO.
 f. The public credit rating(s) with annual surveillance assigned by an NAIC CRP has not lapsed.
 Has the reporting entity assigned FE to Schedule BA non-registered private funds that complied with the above criteria? Yes [] No [X]

37. By rolling/renewing short-term or cash equivalent investments with continued reporting on Schedule DA, Part 1 or Schedule E Part 2 (identified through a code (%) in those investment schedules), the reporting entity is certifying to the following:
 a. The investment is a liquid asset that can be terminated by the reporting entity on the current maturity date.
 b. If the investment is with a nonrelated party or nonaffiliate, then it reflects an arms-length transaction with renewal completed at the discretion of all involved parties.
 c. If the investment is with a related party or affiliate, then the reporting entity has completed robust re-underwriting of the transaction for which documentation is available for regulator review.
 d. Short-term and cash equivalent investments that have been renewed/rolled from the prior period that do not meet the criteria in 37.a - 37.c are reported as long-term investments.
 Has the reporting entity rolled/renewed short-term or cash equivalent investments in accordance with these criteria? Yes [] No [X] N/A []

GENERAL INTERROGATORIES

38.1 Does the reporting entity directly hold cryptocurrencies? Yes [] No [X]

38.2 If the response to 38.1 is yes, on what schedule are they reported?
.....

39.1 Does the reporting entity directly or indirectly accept cryptocurrencies as payments for premiums on policies? Yes [] No [X]

39.2 If the response to 39.1 is yes, are the cryptocurrencies held directly or are they immediately converted to U.S. dollars?
39.21 Held directly Yes [] No []
39.22 Immediately converted to U.S. dollars Yes [] No []

39.3 If the response to 38.1 or 39.1 is yes, list all cryptocurrencies accepted for payments of premiums or that are held directly.

1	2	3
Name of Cryptocurrency	Immediately Converted to USD, Directly Held, or Both	Accepted for Payment of Premiums
.....

OTHER

40.1 Amount of payments to trade associations, service organizations and statistical or rating bureaus, if any?\$

40.2 List the name of the organization and the amount paid if any such payment represented 25% or more of the total payments to trade associations, service organizations and statistical or rating bureaus during the period covered by this statement.

1	2
Name	Amount Paid
.....

41.1 Amount of payments for legal expenses, if any?\$ 14, 120

41.2 List the name of the firm and the amount paid if any such payment represented 25% or more of the total payments for legal expenses during the period covered by this statement.

1	2
Name	Amount Paid
Omelveny & Myers	8,566

42.1 Amount of payments for expenditures in connection with matters before legislative bodies, officers or departments of government, if any?\$ 341

42.2 List the name of the firm and the amount paid if any such payment represented 25% or more of the total payment expenditures in connection with matters before legislative bodies, officers, or departments of government during the period covered by this statement.

1	2
Name	Amount Paid
Preti Flaherty Beliveau Pachios LLP	316
Lobbying expenses disclosed reflect amounts reported in the Lobbyist Disclosure Reports filed with the Secretary of State as well as the cost of external contractors who provided lobbying services to the Company. The amount may include expenses that may have been paid by an affiliate on behalf of the Company and, as a result, may not be included in the Underwriting Gain reported on page 4 of the 2022 Annual Statement.	

GENERAL INTERROGATORIES

PART 2 - HEALTH INTERROGATORIES

1.1 Does the reporting entity have any direct Medicare Supplement Insurance in force? Yes [] No [X]

1.2 If yes, indicate premium earned on U.S. business only. \$ _____

1.3 What portion of Item (1.2) is not reported on the Medicare Supplement Insurance Experience Exhibit? \$ _____

1.31 Reason for excluding
.....

1.4 Indicate amount of earned premium attributable to Canadian and/or Other Alien not included in Item (1.2) above \$ _____

1.5 Indicate total incurred claims on all Medicare Supplement Insurance. \$ _____ 0

1.6 Individual policies: Most current three years:

1.61 Total premium earned \$ 0

1.62 Total incurred claims \$ 0

1.63 Number of covered lives 0

All years prior to most current three years:

1.64 Total premium earned \$ 0

1.65 Total incurred claims \$ 0

1.66 Number of covered lives 0

1.7 Group policies: Most current three years:

1.71 Total premium earned \$ 0

1.72 Total incurred claims \$ 0

1.73 Number of covered lives 0

All years prior to most current three years:

1.74 Total premium earned \$ 0

1.75 Total incurred claims \$ 0

1.76 Number of covered lives 0

2. Health Test:

	1 Current Year	2 Prior Year
2.1 Premium Numerator	7,215,394	2,119,282
2.2 Premium Denominator	7,215,394	2,119,282
2.3 Premium Ratio (2.1/2.2)	1.000	1.000
2.4 Reserve Numerator	2,971,746	830,567
2.5 Reserve Denominator	2,971,746	830,567
2.6 Reserve Ratio (2.4/2.5)	1.000	1.000

3.1 Has the reporting entity received any endowment or gift from contracting hospitals, physicians, dentists, or others that is agreed will be returned when, as and if the earnings of the reporting entity permits? Yes [] No [X]

3.2 If yes, give particulars:
.....

4.1 Have copies of all agreements stating the period and nature of hospitals', physicians', and dentists' care offered to subscribers and dependents been filed with the appropriate regulatory agency? Yes [X] No []

4.2 If not previously filed, furnish herewith a copy(ies) of such agreement(s). Do these agreements include additional benefits offered? Yes [] No []

5.1 Does the reporting entity have stop-loss reinsurance? Yes [] No [X]

5.2 If no, explain:
Elevance Health, Inc. will assume, pay, and discharge the obligations in the event the Company is insolvent.

5.3 Maximum retained risk (see instructions)

5.31 Comprehensive Medical \$

5.32 Medical Only \$

5.33 Medicare Supplement \$

5.34 Dental & Vision \$

5.35 Other Limited Benefit Plan \$

5.36 Other \$

6. Describe arrangement which the reporting entity may have to protect subscribers and their dependents against the risk of insolvency including hold harmless provisions, conversion privileges with other carriers, agreements with providers to continue rendering services, and any other agreements:
.....

7.1 Does the reporting entity set up its claim liability for provider services on a service date basis? Yes [X] No []

7.2 If no, give details
.....

8. Provide the following information regarding participating providers: 8.1 Number of providers at start of reporting year 12,341

8.2 Number of providers at end of reporting year 14,016

9.1 Does the reporting entity have business subject to premium rate guarantees? Yes [] No [X]

9.2 If yes, direct premium earned: 9.21 Business with rate guarantees between 15-36 months.. \$.....

9.22 Business with rate guarantees over 36 months \$.....

GENERAL INTERROGATORIES

- 10.1 Does the reporting entity have Incentive Pool, Withhold or Bonus Arrangements in its provider contracts? Yes No
- 10.2 If yes:
- 10.21 Maximum amount payable bonuses.....\$ 18,913
- 10.22 Amount actually paid for year bonuses.....\$ 70,502
- 10.23 Maximum amount payable withholds.....\$
- 10.24 Amount actually paid for year withholds.....\$

- 11.1 Is the reporting entity organized as:
- 11.12 A Medical Group/Staff Model, Yes No
- 11.13 An Individual Practice Association (IPA), or, Yes No
- 11.14 A Mixed Model (combination of above)? Yes No
- 11.2 Is the reporting entity subject to Statutory Minimum Capital and Surplus Requirements? Yes No
- 11.3 If yes, show the name of the state requiring such minimum capital and surplus. Maine
- 11.4 If yes, show the amount required. \$ 1,935,768
- 11.5 Is this amount included as part of a contingency reserve in stockholder's equity? Yes No
- 11.6 If the amount is calculated, show the calculation
- 250% of Health Risk-Based Capital Authorized Control Level (250% * 774,307)

12. List service areas in which reporting entity is licensed to operate:

1 Name of Service Area
State of Maine
.....

- 13.1 Do you act as a custodian for health savings accounts? Yes No
- 13.2 If yes, please provide the amount of custodial funds held as of the reporting date. \$
- 13.3 Do you act as an administrator for health savings accounts? Yes No
- 13.4 If yes, please provide the balance of funds administered as of the reporting date. \$
- 14.1 Are any of the captive affiliates reported on Schedule S, Part 3, authorized reinsurers? Yes No N/A
- 14.2 If the answer to 14.1 is yes, please provide the following:

1 Company Name	2 NAIC Company Code	3 Domiciliary Jurisdiction	4 Reserve Credit	Assets Supporting Reserve Credit		
				5 Letters of Credit	6 Trust Agreements	7 Other
.....

15. Provide the following for individual ordinary life insurance* policies (U.S. business only) for the current year (prior to reinsurance assumed or ceded):
- 15.1 Direct Premium Written \$
- 15.2 Total Incurred Claims \$
- 15.3 Number of Covered Lives

*Ordinary Life Insurance Includes
Term(whether full underwriting, limited underwriting, jet issue, "short form app")
Whole Life (whether full underwriting, limited underwriting, jet issue, "short form app")
Variable Life (with or without secondary gurantee)
Universal Life (with or without secondary gurantee)
Variable Universal Life (with or without secondary gurantee)

16. Is the reporting entity licensed or chartered, registered, qualified, eligible or writing business in at least two states? Yes No
- 16.1 If no, does the reporting entity assume reinsurance business that covers risks residing in at least one state other than the state of domicile of the reporting entity? Yes No

ANNUAL STATEMENT FOR THE YEAR 2022 OF THE AMH Health Plans of Maine, Inc.

FIVE-YEAR HISTORICAL DATA

	1 2022	2 2021	3 2020	4 2019	5 2018
Balance Sheet (Pages 2 and 3)					
1. Total admitted assets (Page 2, Line 28)	7,135,571	4,889,788	2,439,996		
2. Total liabilities (Page 3, Line 24)	3,386,193	953,432	201,740		
3. Statutory minimum capital and surplus requirement	1,935,768	2,189,578	28,763		
4. Total capital and surplus (Page 3, Line 33)	3,749,378	3,936,356	2,238,256		
Income Statement (Page 4)					
5. Total revenues (Line 8)	7,170,362	2,125,297	0		
6. Total medical and hospital expenses (Line 18)	7,956,585	1,839,263	0		
7. Claims adjustment expenses (Line 20)	378,688	214,943	0		
8. Total administrative expenses (Line 21)	1,043,112	517,424	355		
9. Net underwriting gain (loss) (Line 24)	(3,636,847)	(852,726)	(199,382)		
10. Net investment gain (loss) (Line 27)	(7,581)	(8,974)	(3,616)		
11. Total other income (Lines 28 plus 29)	(2,978)	(482)	0		
12. Net income or (loss) (Line 32)	(3,655,221)	(855,228)	(202,137)		
Cash Flow (Page 6)					
13. Net cash from operations (Line 11)	(1,510,985)	(226,259)	(2,412)		
Risk-Based Capital Analysis					
14. Total adjusted capital	3,749,378	3,936,356	2,238,256		
15. Authorized control level risk-based capital	774,307	875,831	11,505		
Enrollment (Exhibit 1)					
16. Total members at end of period (Column 5, Line 7)	886	302			
17. Total members months (Column 6, Line 7)	9,790	2,932			
Operating Percentage (Page 4) (Item divided by Page 4, sum of Lines 2, 3 and 5) x 100.0					
18. Premiums earned plus risk revenue (Line 2 plus Lines 3 and 5)	100.0	100.0	100.0	100.0	100.0
19. Total hospital and medical plus other non-health (Lines 18 plus Line 19)	111.0	86.5	0.0		
20. Cost containment expenses	2.7	7.1	0.0		
21. Other claims adjustment expenses	2.6	3.0	0.0		
22. Total underwriting deductions (Line 23)	150.7	140.1	0.0		
23. Total underwriting gain (loss) (Line 24)	(50.7)	(40.1)	0.0		
Unpaid Claims Analysis (U&I Exhibit, Part 2B)					
24. Total claims incurred for prior years (Line 17, Col. 5)	300,149	0			
25. Estimated liability of unpaid claims-[prior year (Line 17, Col. 6)]	225,147	0			
Investments In Parent, Subsidiaries and Affiliates					
26. Affiliated bonds (Sch. D Summary, Line 12, Col. 1)					
27. Affiliated preferred stocks (Sch. D Summary, Line 18, Col. 1)		0	0		
28. Affiliated common stocks (Sch. D Summary, Line 24, Col. 1)		0	0		
29. Affiliated short-term investments (subtotal included in Schedule DA Verification, Col. 5, Line 10)					
30. Affiliated mortgage loans on real estate					
31. All other affiliated					
32. Total of above Lines 26 to 31	0	0	0	0	0
33. Total investment in parent included in Lines 26 to 31 above.					

NOTE: If a party to a merger, have the two most recent years of this exhibit been restated due to a merger in compliance with the disclosure requirements of SSAP No. 3, Accounting Changes and Correction of Errors? Yes [] No []
 If no, please explain:

SCHEDULE T PREMIUMS AND OTHER CONSIDERATIONS

Allocated by States and Territories

States, etc.	1 Active Status (a)	Direct Business Only									
		2 Accident and Health Premiums	3 Medicare Title XVIII	4 Medicaid Title XIX	5 CHIP Title XXI	6 Federal Employees Health Benefits Program Premiums	7 Life and Annuity Premiums & Other Considerations	8 Property/Casualty Premiums	9 Total Columns 2 Through 8	10 Deposit-Type Contracts	
1. Alabama	AL	N								0	
2. Alaska	AK	N								0	
3. Arizona	AZ	N								0	
4. Arkansas	AR	N								0	
5. California	CA	N								0	
6. Colorado	CO	N								0	
7. Connecticut	CT	N								0	
8. Delaware	DE	N								0	
9. District of Columbia	DC	N								0	
10. Florida	FL	N								0	
11. Georgia	GA	N								0	
12. Hawaii	HI	N								0	
13. Idaho	ID	N								0	
14. Illinois	IL	N								0	
15. Indiana	IN	N								0	
16. Iowa	IA	N								0	
17. Kansas	KS	N								0	
18. Kentucky	KY	N								0	
19. Louisiana	LA	N								0	
20. Maine	ME	L	7,215,394							7,215,394	
21. Maryland	MD	N								0	
22. Massachusetts	MA	N								0	
23. Michigan	MI	N								0	
24. Minnesota	MN	N								0	
25. Mississippi	MS	N								0	
26. Missouri	MO	N								0	
27. Montana	MT	N								0	
28. Nebraska	NE	N								0	
29. Nevada	NV	N								0	
30. New Hampshire	NH	N								0	
31. New Jersey	NJ	N								0	
32. New Mexico	NM	N								0	
33. New York	NY	N								0	
34. North Carolina	NC	N								0	
35. North Dakota	ND	N								0	
36. Ohio	OH	N								0	
37. Oklahoma	OK	N								0	
38. Oregon	OR	N								0	
39. Pennsylvania	PA	N								0	
40. Rhode Island	RI	N								0	
41. South Carolina	SC	N								0	
42. South Dakota	SD	N								0	
43. Tennessee	TN	N								0	
44. Texas	TX	N								0	
45. Utah	UT	N								0	
46. Vermont	VT	N								0	
47. Virginia	VA	N								0	
48. Washington	WA	N								0	
49. West Virginia	WV	N								0	
50. Wisconsin	WI	N								0	
51. Wyoming	WY	N								0	
52. American Samoa	AS	N								0	
53. Guam	GU	N								0	
54. Puerto Rico	PR	N								0	
55. U.S. Virgin Islands	VI	N								0	
56. Northern Mariana Islands	MP	N								0	
57. Canada	CAN	N								0	
58. Aggregate Other Aliens	OT	XXX	0	0	0	0	0	0	0	0	0
59. Subtotal	XXX	0	7,215,394	0	0	0	0	0	7,215,394	0	0
60. Reporting Entity Contributions for Employee Benefit Plans	XXX									0	
61. Totals (Direct Business)	XXX	0	7,215,394	0	0	0	0	0	7,215,394	0	0
DETAILS OF WRITE-INS											
58001.	XXX										
58002.	XXX										
58003.	XXX										
58998. Summary of remaining write-ins for Line 58 from overflow page	XXX	0	0	0	0	0	0	0	0	0	0
58999. Totals (Lines 58001 through 58003 plus 58998)(Line 58 above)	XXX	0	0	0	0	0	0	0	0	0	0

(a) Active Status Counts:

- 1. L - Licensed or Chartered - Licensed insurance carrier or domiciled RRG..... 1
- 2. R - Registered - Non-domiciled RRGs..... 0
- 3. E - Eligible - Reporting entities eligible or approved to write surplus lines in the state. 0
- 4. Q - Qualified - Qualified or accredited reinsurer..... 0
- 5. N - None of the above - Not allowed to write business in the state..... 56

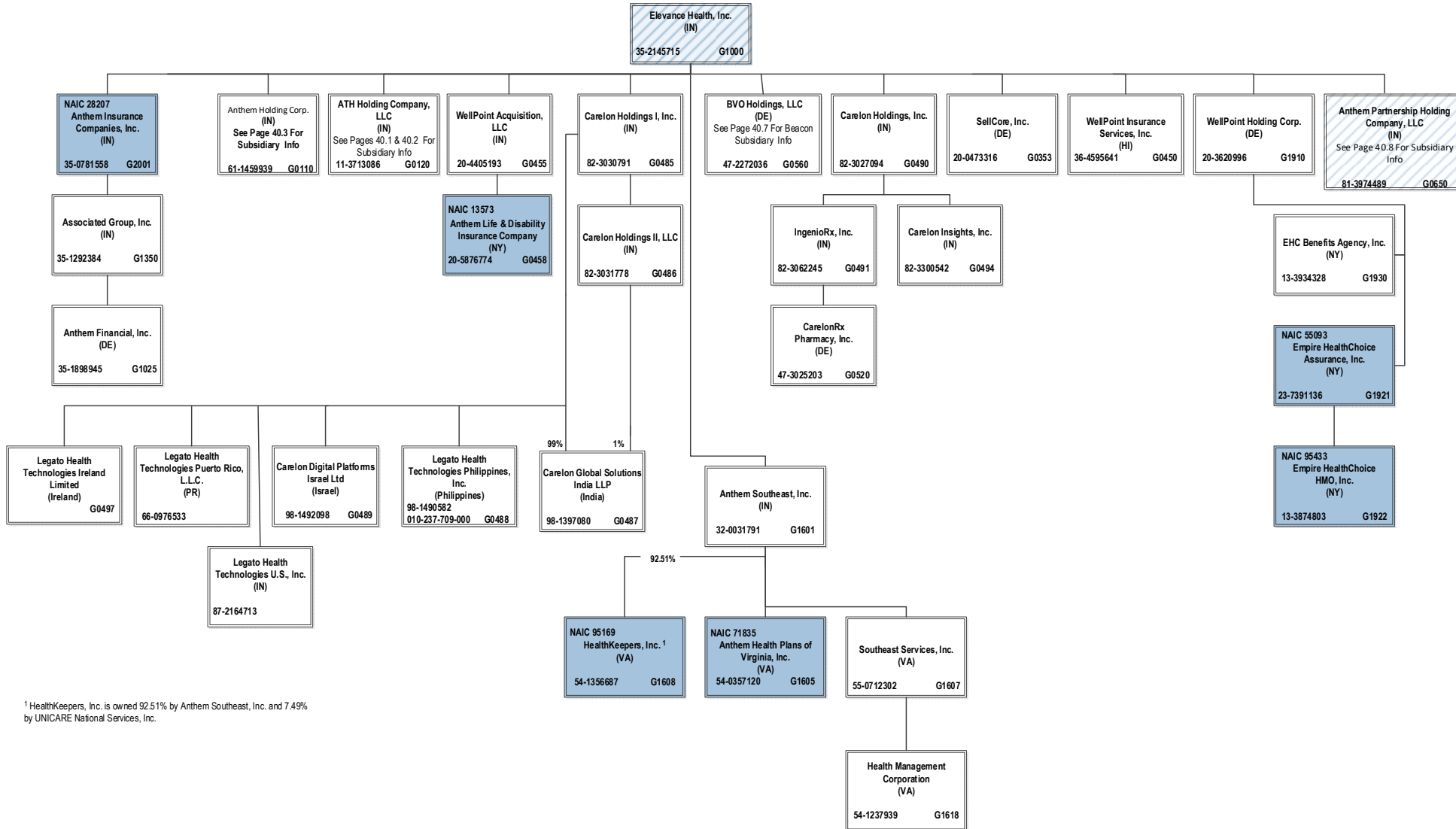
(b) Explanation of basis of allocation by states, premiums by state, etc.

N/A

SCHEDULE Y – INFORMATION CONCERNING ACTIVITIES OF INSURER MEMBERS OF A HOLDING COMPANY GROUP
PART 1 – ORGANIZATIONAL CHART

BCBSA Licensee
Regulated Insurance Company
Regulated BCBSA Licensee

ALL SUBSIDIARIES 100% OWNED AND LLC'S ARE CONTROLLED BY MEMBERS UNLESS OTHERWISE NOTED

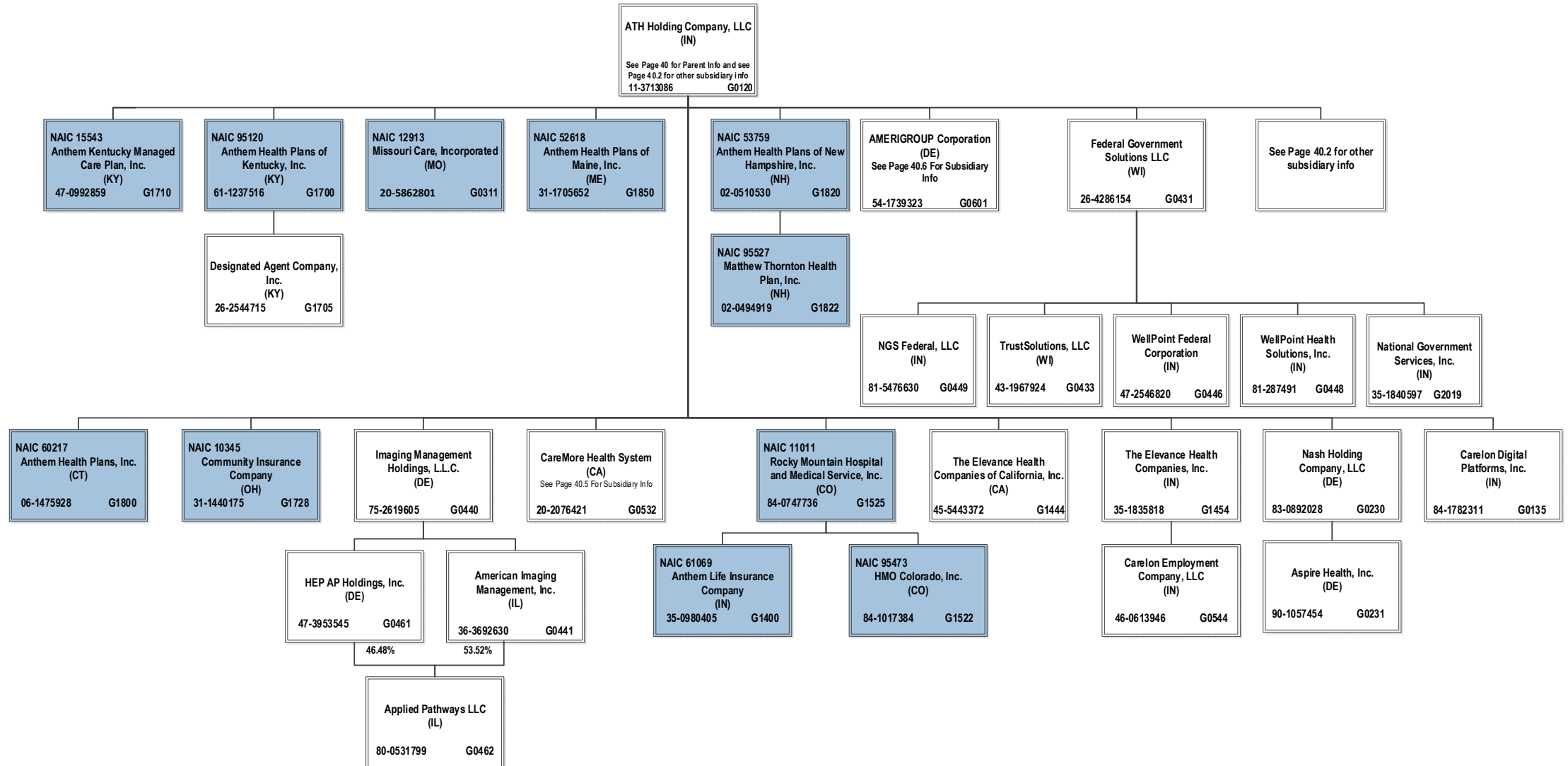
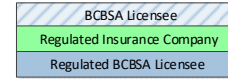


¹ HealthKeepers, Inc. is owned 92.51% by Anthem Southeast, Inc. and 7.49% by UNICARE National Services, Inc.

SCHEDULE Y – INFORMATION CONCERNING ACTIVITIES OF INSURER MEMBERS OF A HOLDING COMPANY GROUP

PART 1 – ORGANIZATIONAL CHART

ALL SUBSIDIARIES 100% OWNED AND LLC'S ARE CONTROLLED BY MEMBERS UNLESS OTHERWISE NOTED

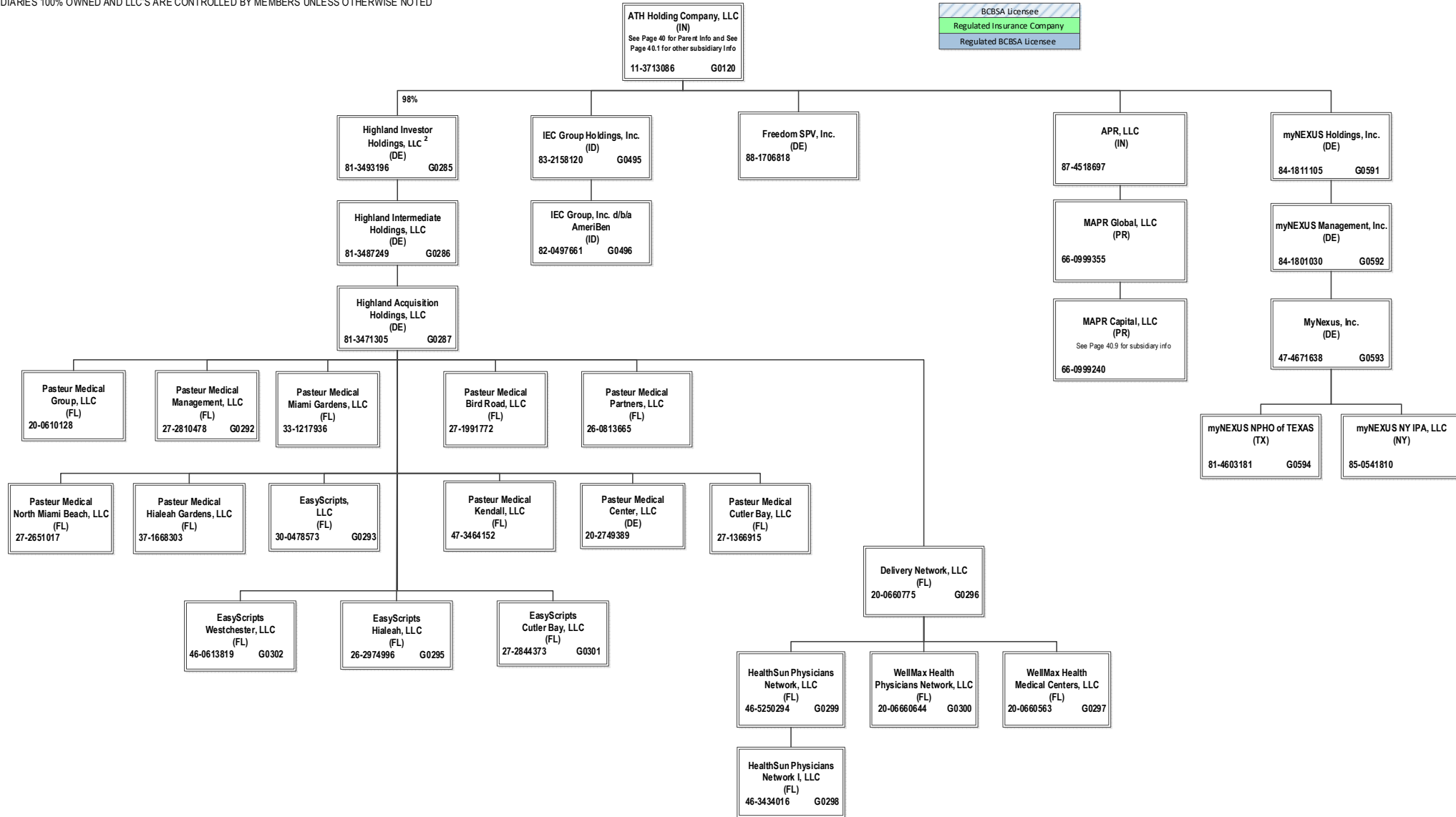


40.1

SCHEDULE Y – INFORMATION CONCERNING ACTIVITIES OF INSURER MEMBERS OF A HOLDING COMPANY GROUP

PART 1 – ORGANIZATIONAL CHART

ALL SUBSIDIARIES 100% OWNED AND LLC'S ARE CONTROLLED BY MEMBERS UNLESS OTHERWISE NOTED



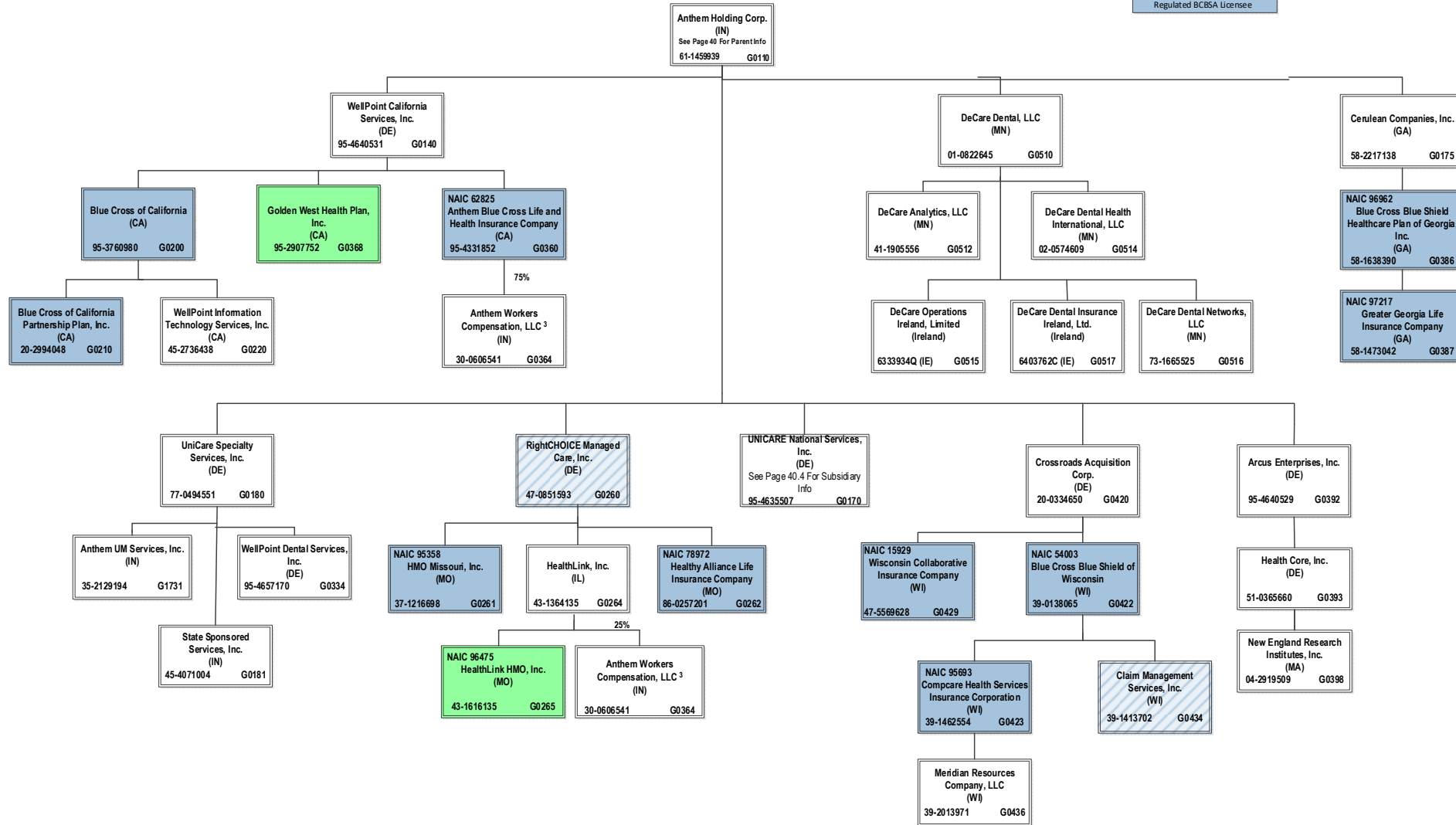
² ATH Holding Company, LLC holds a 98% interest in Highland Investor Holdings, LLC, and Amerigroup Corporation holds the remaining 2% interest.

40.2

SCHEDULE Y – INFORMATION CONCERNING ACTIVITIES OF INSURER MEMBERS OF A HOLDING COMPANY GROUP
PART 1 – ORGANIZATIONAL CHART

ALL SUBSIDIARIES 100% OWNED AND LLC'S ARE CONTROLLED BY MEMBERS UNLESS OTHERWISE NOTED

BCBSA Licensee
Regulated Insurance Company
Regulated BCBSA Licensee



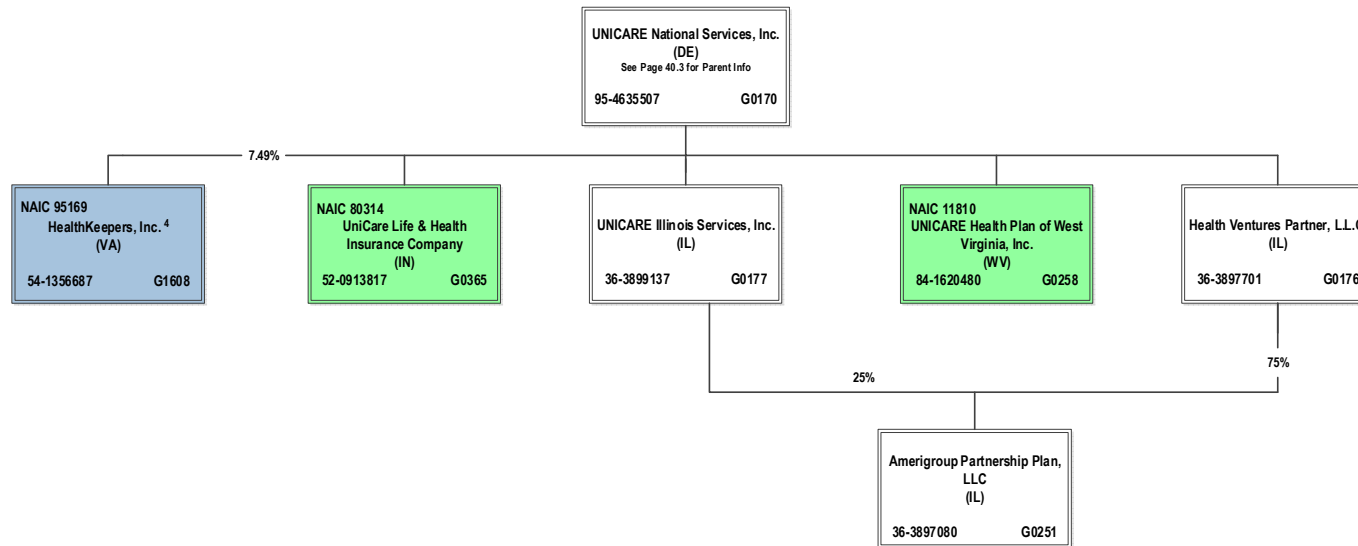
³ Anthem Workers' Compensation, LLC is owned 75% by Anthem Blue Cross Life and Health Insurance Company and 25% by HealthLink, Inc.

40.3

SCHEDULE Y – INFORMATION CONCERNING ACTIVITIES OF INSURER MEMBERS OF A HOLDING COMPANY GROUP
PART 1 – ORGANIZATIONAL CHART

ALL SUBSIDIARIES 100% OWNED AND LLC'S ARE CONTROLLED BY MEMBERS UNLESS OTHERWISE NOTED

BCBSA Licensee
Regulated Insurance Company
Regulated BCBSA Licensee



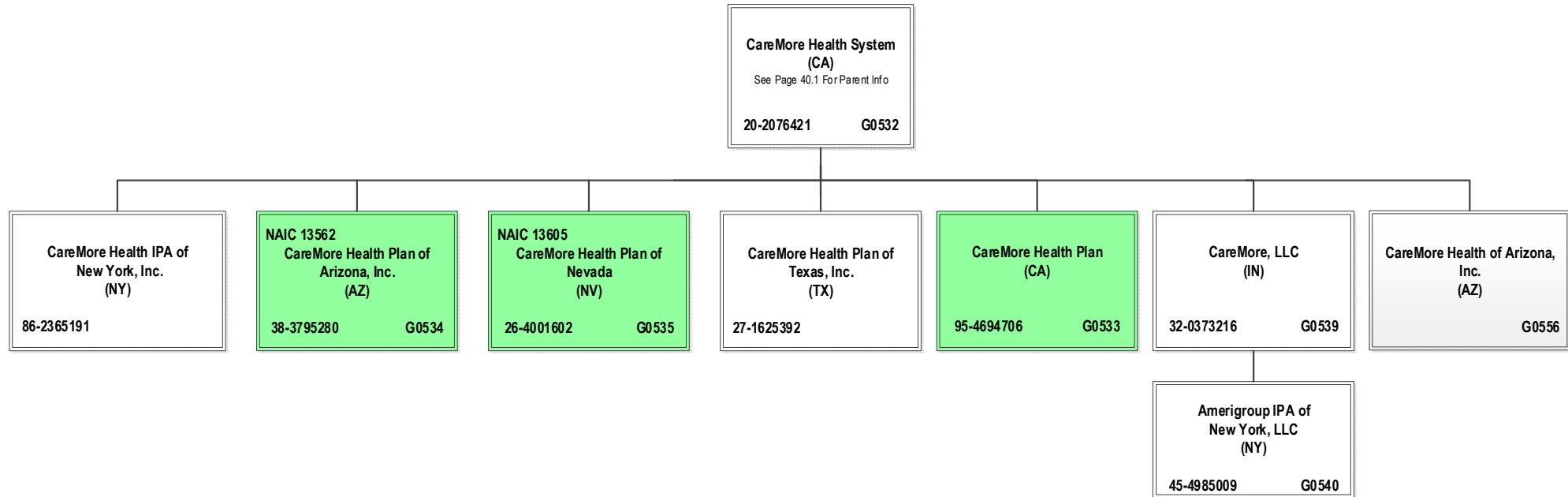
40.4

⁴ HealthKeepers, Inc. is owned 92.51% by Anthem Southeast, Inc. and 7.49% by UNICARE National Services, Inc.

SCHEDULE Y – INFORMATION CONCERNING ACTIVITIES OF INSURER MEMBERS OF A HOLDING COMPANY GROUP
PART 1 – ORGANIZATIONAL CHART

BCBSA Licensee
Regulated Insurance Company
Regulated BCBSA Licensee

ALL SUBSIDIARIES 100% OWNED AND LLC'S ARE CONTROLLED BY MEMBERS UNLESS OTHERWISE NOTED

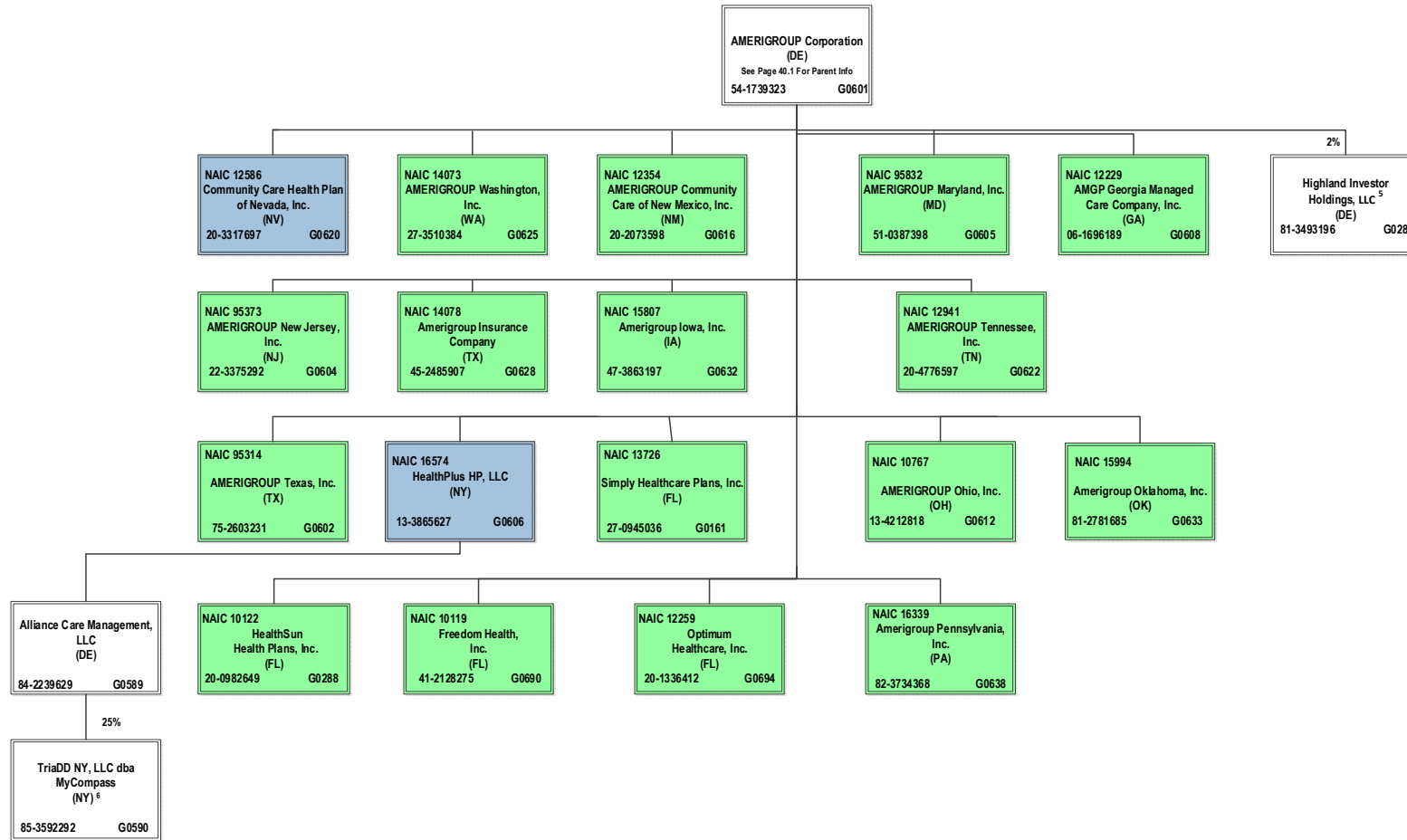


40.5

SCHEDULE Y – INFORMATION CONCERNING ACTIVITIES OF INSURER MEMBERS OF A HOLDING COMPANY GROUP
PART 1 – ORGANIZATIONAL CHART

ALL SUBSIDIARIES 100% OWNED AND LLC'S ARE CONTROLLED BY MEMBERS UNLESS OTHERWISE NOTED

BCBSA Licensee
Regulated Insurance Company
Regulated BCBSA Licensee



40.6

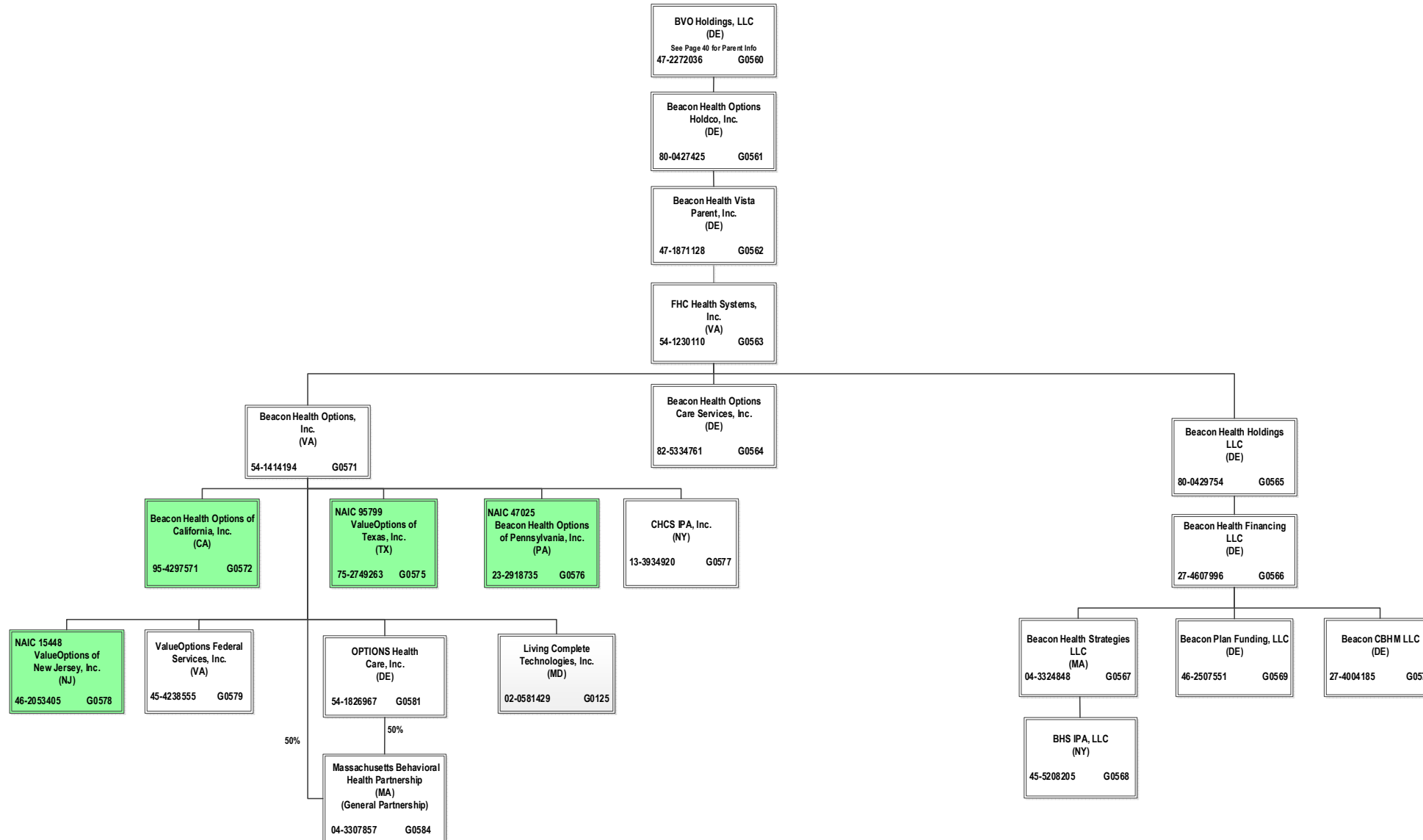
⁵ Amerigroup Corporation holds a 2% interest in Highland Investor Holdings, LLC, and ATH Holding Company, LLC holds the remaining 98% interest.

⁶ TriaDD NY, LLC dba MyCompass is 25% owned by Alliance Care Management, LLC and the remaining 75% interest is owned by unaffiliated investors.

SCHEDULE Y – INFORMATION CONCERNING ACTIVITIES OF INSURER MEMBERS OF A HOLDING COMPANY GROUP
PART 1 – ORGANIZATIONAL CHART

BCBSA Licensee
Regulated Insurance Company
Regulated BCBSA Licensee

ALL SUBSIDIARIES 100% OWNED AND LLC'S ARE CONTROLLED BY MEMBERS UNLESS OTHERWISE NOTED

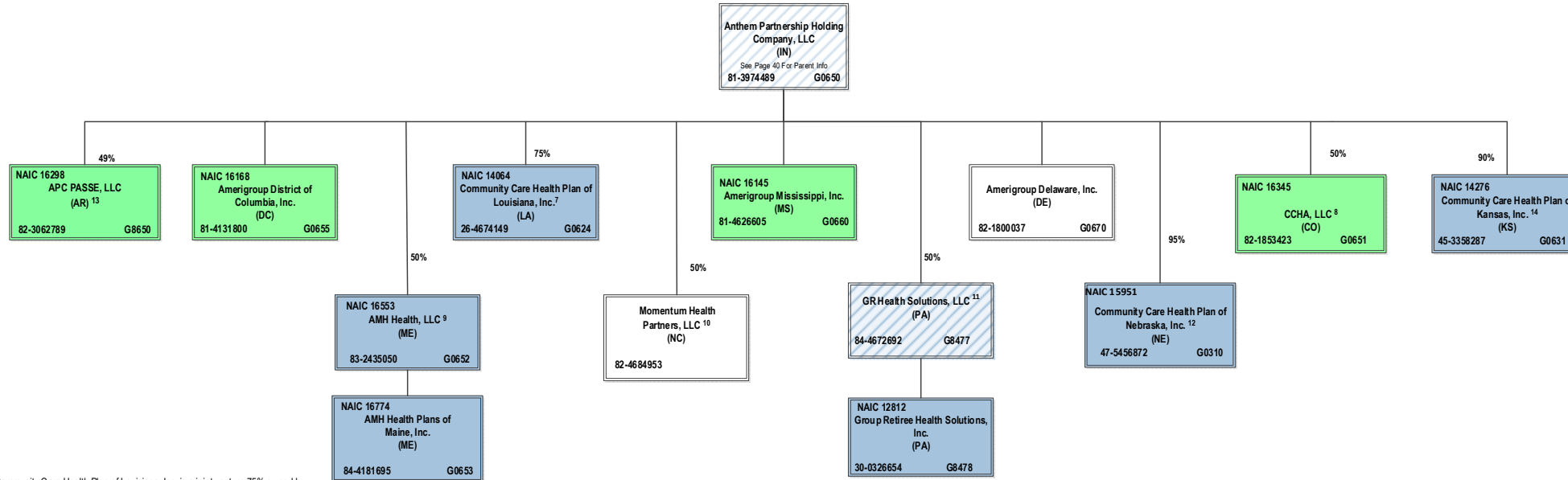


40.7

SCHEDULE Y – INFORMATION CONCERNING ACTIVITIES OF INSURER MEMBERS OF A HOLDING COMPANY GROUP
PART 1 – ORGANIZATIONAL CHART



ALL SUBSIDIARIES 100% OWNED AND LLC'S ARE CONTROLLED BY MEMBERS UNLESS OTHERWISE NOTED



⁷ Community Care Health Plan of Louisiana, Inc. is a joint venture 75% owned by Anthem Partnership Holding Company, LLC and 25% owned by Louisiana Health Service & Indemnity Company d/b/a Blue Cross and Blue Shield of Louisiana (non-affiliate)

⁸ CCHA, LLC is a joint venture 50% owned by Anthem Partnership Holding Company, LLC and 50% owned by Colorado Community Health Alliance, LLC (non-affiliate)

⁹ AMH Health, LLC is a joint venture 50% owned by MaineHealth (non-affiliate) and 50% owned by Anthem Partnership Holding Company, LLC

¹⁰ Momentum Health Partners, LLC is a joint venture 50% owned by Anthem Partnership Holding Company, LLC and 50% owned by Blue Cross and Blue Shield of North Carolina (non-affiliate)

¹¹ GR Health Solutions, LLC is a joint venture 50% owned by Anthem Partnership Holding Company, LLC and 50% owned by Independence Blue Cross, LLC (non-affiliate)

¹² Community Care Health Plan of Nebraska, Inc. is a joint venture 95% owned by Anthem Partnership Holding Company, LLC and 5% owned by Blue Cross and Blue Shield of Nebraska, Inc. (non-affiliate)

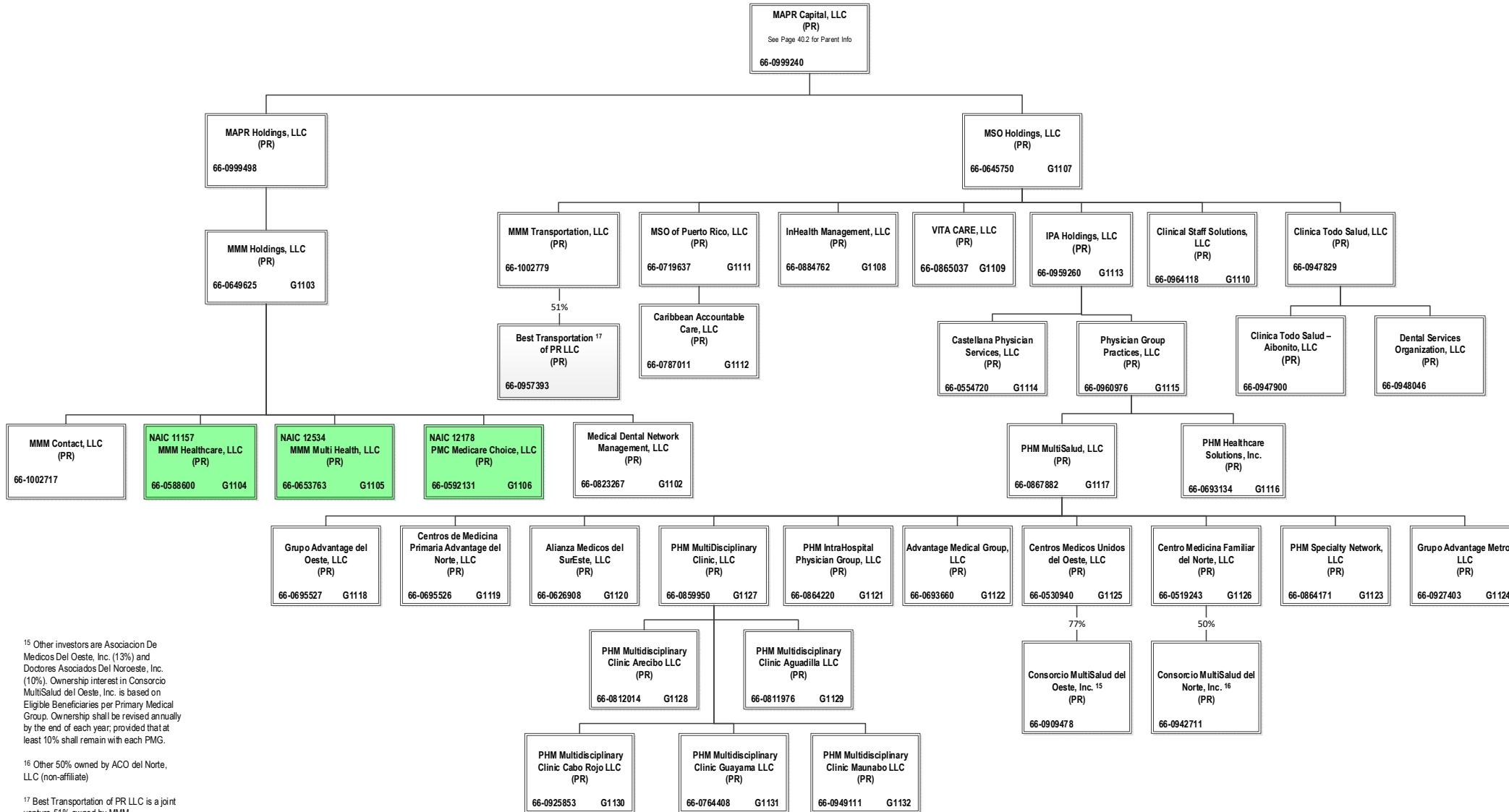
¹³ APC PASSE, LLC (regulated entity) is a joint venture 49% owned by Anthem Partnership Holding Company, LLC and 51% owned by Arkansas Provider Coalition, LLC (non-affiliate)

¹⁴ Community Care Health Plan of Kansas, Inc. is a joint venture 90% owned by Anthem Partnership Holding Company, LLC, 5% owned by Blue Cross and Blue Shield of Kansas (non-affiliate) and 5% owned by Blue Cross and Blue Shield of Kansas City (non-affiliate)

SCHEDULE Y – INFORMATION CONCERNING ACTIVITIES OF INSURER MEMBERS OF A HOLDING COMPANY GROUP
PART 1 – ORGANIZATIONAL CHART

ALL SUBSIDIARIES 100% OWNED AND LLC'S ARE CONTROLLED BY MEMBERS UNLESS OTHERWISE NOTED

BCBSA Licensee
Regulated Insurance Company
Regulated BCBSA Licensee



¹⁵ Other investors are Asociacion De Medicos Del Oeste, Inc. (13%) and Doctores Asociados Del Noroeste, Inc. (10%). Ownership interest in Consorcio MultiSalud del Oeste, Inc. is based on Eligible Beneficiaries per Primary Medical Group. Ownership shall be revised annually by the end of each year, provided that at least 10% shall remain with each PMG.

¹⁶ Other 50% owned by ACO del Norte, LLC (non-affiliate)

¹⁷ Best Transportation of PR LLC is a joint venture 51% owned by MMM Transportation, LLC and 49% owned by Best Transportation of PR LLC

OVERFLOW PAGE FOR WRITE-INS

NONE