



HEALTH ANNUAL STATEMENT

FOR THE YEAR ENDED DECEMBER 31, 2022
OF THE CONDITION AND AFFAIRS OF THE

AMH Health, LLC

NAIC Group Code 0671 (Current) NAIC Company Code 16553 Employer's ID Number 83-2435050
 Organized under the Laws of Maine (Prior) State of Domicile or Port of Entry ME
 Country of Domicile United States of America
 Licensed as business type: Health Maintenance Organization
 Is HMO Federally Qualified? Yes [] No [X]
 Incorporated/Organized 11/02/2018 Commenced Business 04/12/2019
 Statutory Home Office 2 Gannett Drive, South Portland, ME, US 04106
 (Street and Number) (City or Town, State, Country and Zip Code)
 Main Administrative Office 4425 Corporation Lane
 (Street and Number)
Virginia Beach, VA, US 23462 757-473-2737
 (City or Town, State, Country and Zip Code) (Area Code) (Telephone Number)
 Mail Address 4425 Corporation Lane, Virginia Beach, VA, US 23462
 (Street and Number or P.O. Box) (City or Town, State, Country and Zip Code)
 Primary Location of Books and Records 220 Virginia Avenue
 (Street and Number)
Indianapolis, IN, US 46204 317-432-6988
 (City or Town, State, Country and Zip Code) (Area Code) (Telephone Number)
 Internet Website Address www.elevancehealth.com
 Statutory Statement Contact Leigh Barrett, 317-432-6988
 (Name) (Area Code) (Telephone Number)
leigh.barrett@elevancehealth.com 317-488-6200
 (E-mail Address) (FAX Number)

OFFICERS

President and Chairperson Albert Graton Swallow # Treasurer Vincent Edward Scher
 Secretary Kathleen Susan Kiefer Assistant Treasurer Eric Kenneth Noble

OTHER

DIRECTORS OR TRUSTEES

Aleksey Furman Kimberly Switlick-Prose # Scott Douglas Mills
Francis George McGinty Raul Guillermo Smith Albert Graton Swallow
David Earl Warren

State of Indiana SS
 County of Johnson

The officers of this reporting entity being duly sworn, each depose and say that they are the described officers of said reporting entity, and that on the reporting period stated above, all of the herein described assets were the absolute property of the said reporting entity, free and clear from any liens or claims thereon, except as herein stated, and that this statement, together with related exhibits, schedules and explanations therein contained, annexed or referred to, is a full and true statement of all the assets and liabilities and of the condition and affairs of the said reporting entity as of the reporting period stated above, and of its income and deductions therefrom for the period ended, and have been completed in accordance with the NAIC Annual Statement Instructions and Accounting Practices and Procedures manual except to the extent that: (1) state law may differ; or, (2) that state rules or regulations require differences in reporting not related to accounting practices and procedures, according to the best of their information, knowledge and belief, respectively. Furthermore, the scope of this attestation by the described officers also includes the related corresponding electronic filing with the NAIC, when required, that is an exact copy (except for formatting differences due to electronic filing) of the enclosed statement. The electronic filing may be requested by various regulators in lieu of or in addition to the enclosed statement.

DocuSigned by:

 295EB07AB6114AB...
 Albert Graton Swallow
 President

DocuSigned by:

 D85175EE05784B1...
 Kathleen Susan Kiefer
 Secretary

DocuSigned by:

 A85A33722D4143E...
 Vincent Edward Scher
 Treasurer

Subscribed and sworn to before me this
14th day of February 2023

 Rita F. Gentry
 Executive Assistant
 1/17/2029

- a. Is this an original filing? Yes [X] No []
 b. If no,
 1. State the amendment number.....
 2. Date filed
 3. Number of pages attached.....

Rita F. Gentry
 Notary Public
 SEAL
 Johnson County, State of Indiana
 My Commission Expires January 17, 2029
 Commission No.: NP0694321

ANNUAL STATEMENT FOR THE YEAR 2022 OF THE AMH Health, LLC

ASSETS

	Current Year			Prior Year
	1 Assets	2 Nonadmitted Assets	3 Net Admitted Assets (Cols. 1 - 2)	4 Net Admitted Assets
1. Bonds (Schedule D)	51,187,000		51,187,000	27,016,024
2. Stocks (Schedule D):				
2.1 Preferred stocks			0	0
2.2 Common stocks	3,749,378		3,749,378	3,936,356
3. Mortgage loans on real estate (Schedule B):				
3.1 First liens			0	0
3.2 Other than first liens			0	0
4. Real estate (Schedule A):				
4.1 Properties occupied by the company (less \$ encumbrances)			0	0
4.2 Properties held for the production of income (less \$ encumbrances)			0	0
4.3 Properties held for sale (less \$ encumbrances)			0	0
5. Cash (\$ 22,030,332 , Schedule E - Part 1), cash equivalents (\$, Schedule E - Part 2) and short-term investments (\$ 0 , Schedule DA)	22,030,332		22,030,332	69,499,398
6. Contract loans, (including \$ premium notes)			0	0
7. Derivatives (Schedule DB)			0	0
8. Other invested assets (Schedule BA)			0	0
9. Receivables for securities			0	0
10. Securities lending reinvested collateral assets (Schedule DL)	2,451,416		2,451,416	1,561,239
11. Aggregate write-ins for invested assets	0	0	0	0
12. Subtotals, cash and invested assets (Lines 1 to 11)	79,418,126	0	79,418,126	102,013,017
13. Title plants less \$ charged off (for Title insurers only)			0	0
14. Investment income due and accrued	177,220		177,220	7,210
15. Premiums and considerations:				
15.1 Uncollected premiums and agents' balances in the course of collection	172,506	130,903	41,603	143,480
15.2 Deferred premiums, agents' balances and installments booked but deferred and not yet due (including \$ earned but unbilled premiums)			0	0
15.3 Accrued retrospective premiums (\$) and contracts subject to redetermination (\$ 8,358,444)	8,358,444		8,358,444	4,378,372
16. Reinsurance:				
16.1 Amounts recoverable from reinsurers			0	0
16.2 Funds held by or deposited with reinsured companies			0	0
16.3 Other amounts receivable under reinsurance contracts			0	0
17. Amounts receivable relating to uninsured plans	4,628,368		4,628,368	3,446,916
18.1 Current federal and foreign income tax recoverable and interest thereon	465,757		465,757	465,757
18.2 Net deferred tax asset			0	232,786
19. Guaranty funds receivable or on deposit			0	0
20. Electronic data processing equipment and software			0	0
21. Furniture and equipment, including health care delivery assets (\$)			0	0
22. Net adjustment in assets and liabilities due to foreign exchange rates			0	0
23. Receivables from parent, subsidiaries and affiliates			0	0
24. Health care (\$ 3,141,948) and other amounts receivable	3,796,543	654,595	3,141,948	2,125,937
25. Aggregate write-ins for other than invested assets	428,035	0	428,035	969,934
26. Total assets excluding Separate Accounts, Segregated Accounts and Protected Cell Accounts (Lines 12 to 25)	97,444,999	785,498	96,659,501	113,783,409
27. From Separate Accounts, Segregated Accounts and Protected Cell Accounts			0	0
28. Total (Lines 26 and 27)	97,444,999	785,498	96,659,501	113,783,409
DETAILS OF WRITE-INS				
1101.				
1102.				
1103.				
1198. Summary of remaining write-ins for Line 11 from overflow page	0	0	0	0
1199. Totals (Lines 1101 thru 1103 plus 1198)(Line 11 above)	0	0	0	0
2501. State income tax recoverable	428,035	0	428,035	969,934
2502.				
2503.				
2598. Summary of remaining write-ins for Line 25 from overflow page	0	0	0	0
2599. Totals (Lines 2501 thru 2503 plus 2598)(Line 25 above)	428,035	0	428,035	969,934

LIABILITIES, CAPITAL AND SURPLUS

	Current Year			Prior Year
	1 Covered	2 Uncovered	3 Total	4 Total
1. Claims unpaid (less \$0 reinsurance ceded)	34,571,933		34,571,933	25,907,920
2. Accrued medical incentive pool and bonus amounts	931,193		931,193	350,039
3. Unpaid claims adjustment expenses.....	705,226		705,226	500,564
4. Aggregate health policy reserves, including the liability of \$0 for medical loss ratio rebate per the Public Health Service Act	8,689,264		8,689,264	1,235,861
5. Aggregate life policy reserves.....			0	0
6. Property/casualty unearned premium reserves.....			0	0
7. Aggregate health claim reserves.....			0	0
8. Premiums received in advance.....	4,538		4,538	11,057
9. General expenses due or accrued.....	13,102		13,102	4,180
10.1 Current federal and foreign income tax payable and interest thereon (including \$ on realized capital gains (losses))			0	0
10.2 Net deferred tax liability.....			0	0
11. Ceded reinsurance premiums payable.....			0	0
12. Amounts withheld or retained for the account of others.....	19,523		19,523	77,608
13. Remittances and items not allocated.....	44,158		44,158	93,429
14. Borrowed money (including \$ current) and interest thereon \$ (including \$ current).....			0	0
15. Amounts due to parent, subsidiaries and affiliates.....	5,969,710		5,969,710	53,094,668
16. Derivatives.....			0	0
17. Payable for securities.....	92,495		92,495	0
18. Payable for securities lending	2,451,416		2,451,416	1,561,239
19. Funds held under reinsurance treaties (with \$ authorized reinsurers, \$0 unauthorized reinsurers and \$0 certified reinsurers).....			0	0
20. Reinsurance in unauthorized and certified (\$) companies			0	0
21. Net adjustments in assets and liabilities due to foreign exchange rates			0	0
22. Liability for amounts held under uninsured plans.....	4,153,727		4,153,727	48,502
23. Aggregate write-ins for other liabilities (including \$ 128,978 current).....	128,978	0	128,978	156,637
24. Total liabilities (Lines 1 to 23).....	57,775,263	0	57,775,263	83,041,704
25. Aggregate write-ins for special surplus funds.....	XXX	XXX	0	0
26. Common capital stock.....	XXX	XXX		
27. Preferred capital stock.....	XXX	XXX		
28. Gross paid in and contributed surplus.....	XXX	XXX	80,002,000	39,002,000
29. Surplus notes.....	XXX	XXX	0	0
30. Aggregate write-ins for other than special surplus funds.....	XXX	XXX	0	0
31. Unassigned funds (surplus).....	XXX	XXX	(41,117,762)	(8,260,295)
32. Less treasury stock, at cost:				
32.1 shares common (value included in Line 26 \$).....	XXX	XXX		
32.2 shares preferred (value included in Line 27 \$).....	XXX	XXX		
33. Total capital and surplus (Lines 25 to 31 minus Line 32).....	XXX	XXX	38,884,238	30,741,705
34. Total liabilities, capital and surplus (Lines 24 and 33)	XXX	XXX	96,659,501	113,783,409
DETAILS OF WRITE-INS				
2301. Other liabilities	76,467		76,467	0
2302. Escheat liability	52,511		52,511	13,446
2303. Miscellaneous Medicare liabilities	0		0	143,191
2398. Summary of remaining write-ins for Line 23 from overflow page	0	0	0	0
2399. Totals (Lines 2301 thru 2303 plus 2398)(Line 23 above)	128,978	0	128,978	156,637
2501.	XXX	XXX		
2502.	XXX	XXX		
2503.	XXX	XXX		
2598. Summary of remaining write-ins for Line 25 from overflow page	XXX	XXX	0	0
2599. Totals (Lines 2501 thru 2503 plus 2598)(Line 25 above)	XXX	XXX	0	0
3001.	XXX	XXX		
3002.	XXX	XXX		
3003.	XXX	XXX		
3098. Summary of remaining write-ins for Line 30 from overflow page	XXX	XXX	0	0
3099. Totals (Lines 3001 thru 3003 plus 3098)(Line 30 above)	XXX	XXX	0	0

ANNUAL STATEMENT FOR THE YEAR 2022 OF THE AMH Health, LLC
STATEMENT OF REVENUE AND EXPENSES

	Current Year		Prior Year
	1 Uncovered	2 Total	3 Total
1. Member Months.....	XXX	202,097	160,585
2. Net premium income (including \$ non-health premium income)	XXX	224,429,321	170,491,948
3. Change in unearned premium reserves and reserve for rate credits	XXX	19,812	(1,227,969)
4. Fee-for-service (net of \$ medical expenses)	XXX	0	
5. Risk revenue	XXX	0	
6. Aggregate write-ins for other health care related revenues	XXX	0	0
7. Aggregate write-ins for other non-health revenues	XXX	0	0
8. Total revenues (Lines 2 to 7)	XXX	224,449,133	169,263,979
Hospital and Medical:			
9. Hospital/medical benefits		171,998,614	114,480,733
10. Other professional services		18,013,848	13,994,942
11. Outside referrals		0	
12. Emergency room and out-of-area		13,507,954	8,178,282
13. Prescription drugs		8,015,990	10,418,480
14. Aggregate write-ins for other hospital and medical.....	0	0	0
15. Incentive pool, withhold adjustments and bonus amounts		3,413,711	2,406,466
16. Subtotal (Lines 9 to 15)	0	214,950,117	149,478,903
Less:			
17. Net reinsurance recoveries		0	
18. Total hospital and medical (Lines 16 minus 17)	0	214,950,117	149,478,903
19. Non-health claims (net)			
20. Claims adjustment expenses, including \$ 5,331,726 cost containment expenses		9,134,366	8,378,491
21. General administrative expenses		22,340,915	17,701,718
22. Increase in reserves for life and accident and health contracts (including \$ increase in reserves for life only)		7,465,532	0
23. Total underwriting deductions (Lines 18 through 22).....	0	253,890,930	175,559,112
24. Net underwriting gain or (loss) (Lines 8 minus 23)	XXX	(29,441,797)	(6,295,133)
25. Net investment income earned (Exhibit of Net Investment Income, Line 17)		776,997	259,088
26. Net realized capital gains (losses) less capital gains tax of \$ (45,226)		(174,878)	152,510
27. Net investment gains (losses) (Lines 25 plus 26)	0	602,119	411,598
28. Net gain or (loss) from agents' or premium balances charged off [(amount recovered \$) (amount charged off \$ 17,582)]		(17,582)	(9,987)
29. Aggregate write-ins for other income or expenses	0	37,752	58,133
30. Net income or (loss) after capital gains tax and before all other federal income taxes (Lines 24 plus 27 plus 28 plus 29)	XXX	(28,819,508)	(5,835,389)
31. Federal and foreign income taxes incurred	XXX	(187,562)	(12,344)
32. Net income (loss) (Lines 30 minus 31)	XXX	(28,631,946)	(5,823,045)
DETAILS OF WRITE-INS			
0601.	XXX		
0602.	XXX		
0603.	XXX		
0698. Summary of remaining write-ins for Line 6 from overflow page	XXX	0	0
0699. Totals (Lines 0601 thru 0603 plus 0698)(Line 6 above)	XXX	0	0
0701.	XXX		
0702.	XXX		
0703.	XXX		
0798. Summary of remaining write-ins for Line 7 from overflow page	XXX	0	0
0799. Totals (Lines 0701 thru 0703 plus 0798)(Line 7 above)	XXX	0	0
1401.			
1402.			
1403.			
1498. Summary of remaining write-ins for Line 14 from overflow page	0	0	0
1499. Totals (Lines 1401 thru 1403 plus 1498)(Line 14 above)	0	0	0
2901. Miscellaneous income (expense)		37,752	58,133
2902.			
2903.			
2998. Summary of remaining write-ins for Line 29 from overflow page	0	0	0
2999. Totals (Lines 2901 thru 2903 plus 2998)(Line 29 above)	0	37,752	58,133

STATEMENT OF REVENUE AND EXPENSES (Continued)

	1 Current Year	2 Prior Year
CAPITAL AND SURPLUS ACCOUNT		
33. Capital and surplus prior reporting year.....	30,741,705	14,101,828
34. Net income or (loss) from Line 32	(28,631,946)	(5,823,045)
35. Change in valuation basis of aggregate policy and claim reserves		
36. Change in net unrealized capital gains (losses) less capital gains tax of \$	(3,686,978)	(901,900)
37. Change in net unrealized foreign exchange capital gain or (loss)		
38. Change in net deferred income tax	(232,786)	(25,232)
39. Change in nonadmitted assets	(305,757)	2,390,054
40. Change in unauthorized and certified reinsurance	0	0
41. Change in treasury stock	0	0
42. Change in surplus notes	0	0
43. Cumulative effect of changes in accounting principles.....		
44. Capital Changes:		
44.1 Paid in	0	0
44.2 Transferred from surplus (Stock Dividend).....	0	0
44.3 Transferred to surplus.....		
45. Surplus adjustments:		
45.1 Paid in	41,000,000	21,000,000
45.2 Transferred to capital (Stock Dividend)		
45.3 Transferred from capital		
46. Dividends to stockholders		
47. Aggregate write-ins for gains or (losses) in surplus	0	0
48. Net change in capital and surplus (Lines 34 to 47)	8,142,533	16,639,877
49. Capital and surplus end of reporting period (Line 33 plus 48)	38,884,238	30,741,705
DETAILS OF WRITE-INS		
4701.		
4702.		
4703.		
4798. Summary of remaining write-ins for Line 47 from overflow page	0	0
4799. Totals (Lines 4701 thru 4703 plus 4798)(Line 47 above)	0	0

ANNUAL STATEMENT FOR THE YEAR 2022 OF THE AMH Health, LLC

CASH FLOW

	1	2
	Current Year	Prior Year
Cash from Operations		
1. Premiums collected net of reinsurance	220,480,824	167,028,472
2. Net investment income	1,230,382	422,663
3. Miscellaneous income	0	0
4. Total (Lines 1 through 3)	221,711,206	167,451,135
5. Benefit and loss related payments	207,212,361	137,091,844
6. Net transfers to Separate Accounts, Segregated Accounts and Protected Cell Accounts		
7. Commissions, expenses paid and aggregate write-ins for deductions	27,777,100	31,035,610
8. Dividends paid to policyholders		
9. Federal and foreign income taxes paid (recovered) net of \$ (45,226) tax on capital gains (losses)	(232,788)	0
10. Total (Lines 5 through 9)	234,756,673	168,127,454
11. Net cash from operations (Line 4 minus Line 10)	(13,045,467)	(676,319)
Cash from Investments		
12. Proceeds from investments sold, matured or repaid:		
12.1 Bonds	10,491,640	35,126,183
12.2 Stocks	1,354,181	0
12.3 Mortgage loans	0	0
12.4 Real estate	0	0
12.5 Other invested assets	0	0
12.6 Net gains or (losses) on cash, cash equivalents and short-term investments	(357)	0
12.7 Miscellaneous proceeds	92,495	0
12.8 Total investment proceeds (Lines 12.1 to 12.7)	11,937,959	35,126,183
13. Cost of investments acquired (long-term only):		
13.1 Bonds	36,858,695	62,007,200
13.2 Stocks	3,500,000	2,600,000
13.3 Mortgage loans	0	0
13.4 Real estate	0	0
13.5 Other invested assets	0	0
13.6 Miscellaneous applications	890,177	1,561,239
13.7 Total investments acquired (Lines 13.1 to 13.6)	41,248,872	66,168,439
14. Net increase (decrease) in contract loans and premium notes	0	0
15. Net cash from investments (Line 12.8 minus Line 13.7 minus Line 14)	(29,310,913)	(31,042,256)
Cash from Financing and Miscellaneous Sources		
16. Cash provided (applied):		
16.1 Surplus notes, capital notes	0	0
16.2 Capital and paid in surplus, less treasury stock	41,000,000	21,000,000
16.3 Borrowed funds	0	0
16.4 Net deposits on deposit-type contracts and other insurance liabilities	0	0
16.5 Dividends to stockholders	0	0
16.6 Other cash provided (applied)	(46,112,686)	29,764,041
17. Net cash from financing and miscellaneous sources (Lines 16.1 to 16.4 minus Line 16.5 plus Line 16.6)	(5,112,686)	50,764,041
RECONCILIATION OF CASH, CASH EQUIVALENTS AND SHORT-TERM INVESTMENTS		
18. Net change in cash, cash equivalents and short-term investments (Line 11, plus Lines 15 and 17)	(47,469,066)	19,045,466
19. Cash, cash equivalents and short-term investments:		
19.1 Beginning of year	69,499,398	50,453,932
19.2 End of year (Line 18 plus Line 19.1)	22,030,332	69,499,398

Note: Supplemental disclosures of cash flow information for non-cash transactions:

--	--	--

ANNUAL STATEMENT FOR THE YEAR 2022 OF THE AMH Health, LLC
ANALYSIS OF OPERATIONS BY LINES OF BUSINESS

	1	2	3	4	5	6	7	8	9	10
	Total	Comprehensive (Hospital & Medical)	Medicare Supplement	Dental Only	Vision Only	Federal Employees Health Benefits Plan	Title XVIII Medicare	Title XIX Medicaid	Other Health	Other Non-Health
1. Net premium income	224,429,321						224,429,321			
2. Change in unearned premium reserves and reserve for rate credit	19,812						19,812			
3. Fee-for-service (net of \$ medical expenses)	0									XXX
4. Risk revenue	0									XXX
5. Aggregate write-ins for other health care related revenues	0	0	0	0	0	0	0	0	0	XXX
6. Aggregate write-ins for other non-health care related revenues	0	XXX	XXX	XXX	XXX	XXX	XXX	XXX	XXX	0
7. Total revenues (Lines 1 to 6)	224,449,133	0	0	0	0	0	224,449,133	0	0	0
8. Hospital/medical benefits	171,998,614						171,998,614			XXX
9. Other professional services	18,013,848						18,013,848			XXX
10. Outside referrals	0									XXX
11. Emergency room and out-of-area	13,507,954						13,507,954			XXX
12. Prescription drugs	8,015,990						8,015,990			XXX
13. Aggregate write-ins for other hospital and medical	0	0	0	0	0	0	0	0	0	XXX
14. Incentive pool, withhold adjustments and bonus amounts	3,413,711						3,413,711			XXX
15. Subtotal (Lines 8 to 14)	214,950,117	0	0	0	0	0	214,950,117	0	0	XXX
16. Net reinsurance recoveries	0									XXX
17. Total medical and hospital (Lines 15 minus 16)	214,950,117	0	0	0	0	0	214,950,117	0	0	XXX
18. Non-health claims (net)	0	XXX	XXX	XXX	XXX	XXX	XXX	XXX	XXX	
19. Claims adjustment expenses including \$ cost containment expenses	9,134,366						9,134,366			
20. General administrative expenses	22,340,915						22,340,915			
21. Increase in reserves for accident and health contracts	7,465,532						7,465,532			XXX
22. Increase in reserves for life contracts	0	XXX	XXX	XXX	XXX	XXX	XXX	XXX	XXX	
23. Total underwriting deductions (Lines 17 to 22)	253,890,930	0	0	0	0	0	253,890,930	0	0	0
24. Total underwriting gain or (loss) (Line 7 minus Line 23)	(29,441,797)	0	0	0	0	0	(29,441,797)	0	0	0
DETAILS OF WRITE-INS										
0501.										XXX
0502.										XXX
0503.										XXX
0598. Summary of remaining write-ins for Line 5 from overflow page	0	0	0	0	0	0	0	0	0	XXX
0599. Totals (Lines 0501 thru 0503 plus 0598) (Line 5 above)	0	0	0	0	0	0	0	0	0	XXX
0601.		XXX	XXX	XXX	XXX	XXX	XXX	XXX	XXX	XXX
0602.		XXX	XXX	XXX	XXX	XXX	XXX	XXX	XXX	XXX
0603.		XXX	XXX	XXX	XXX	XXX	XXX	XXX	XXX	XXX
0698. Summary of remaining write-ins for Line 6 from overflow page	0	XXX	XXX	XXX	XXX	XXX	XXX	XXX	XXX	0
0699. Totals (Lines 0601 thru 0603 plus 0698) (Line 6 above)	0	XXX	XXX	XXX	XXX	XXX	XXX	XXX	XXX	0
1301.										XXX
1302.										XXX
1303.										XXX
1398. Summary of remaining write-ins for Line 13 from overflow page	0	0	0	0	0	0	0	0	0	XXX
1399. Totals (Lines 1301 thru 1303 plus 1398) (Line 13 above)	0	0	0	0	0	0	0	0	0	XXX

ANNUAL STATEMENT FOR THE YEAR 2022 OF THE AMH Health, LLC

UNDERWRITING AND INVESTMENT EXHIBIT

PART 1 - PREMIUMS

Line of Business	1 Direct Business	2 Reinsurance Assumed	3 Reinsurance Ceded	4 Net Premium Income (Cols. 1 + 2 - 3)
1. Comprehensive (hospital and medical) individual				0
2. Comprehensive (hospital and medical) group				0
3. Medicare Supplement				0
4. Dental only				0
5. Vision only				0
6. Federal Employees Health Benefits Plan	0			0
7. Title XVIII - Medicare	224,429,321			224,429,321
8. Title XIX - Medicaid	0			0
9. Credit A&H				0
10. Disability Income				0
11. Long-Term Care				0
12. Other health				0
13. Health subtotal (Lines 1 through 12)	224,429,321	0	0	224,429,321
14. Life	0			0
15. Property/casualty	0			0
16. Totals (Lines 13 to 15)	224,429,321	0	0	224,429,321

ANNUAL STATEMENT FOR THE YEAR 2022 OF THE AMH Health, LLC

UNDERWRITING AND INVESTMENT EXHIBIT

PART 2 - CLAIMS INCURRED DURING THE YEAR

	1 Total	Comprehensive (Hospital & Medical)		4 Medicare Supplement	5 Dental Only	6 Vision Only	7 Federal Employees Health Benefits Plan	8 Title XVIII Medicare	9 Title XIX Medicaid	10 Credit A&H	11 Disability Income	12 Long-Term Care	13 Other Health	14 Other Non-Health
		2 Individual	3 Group											
1. Payments during the year:														
1.1 Direct	204,376,995							204,376,995						
1.2 Reinsurance assumed	0													
1.3 Reinsurance ceded	0													
1.4 Net	204,376,995	0	0	0	0	0	0	204,376,995	0	0	0	0	0	0
2. Paid medical incentive pools and bonuses	2,832,557							2,832,557						
3. Claim liability December 31, current year from Part 2A:														
3.1 Direct	34,571,933	0	0	0	0	0	0	34,571,933	0	0	0	0	0	0
3.2 Reinsurance assumed	0	0	0	0	0	0	0	0	0	0	0	0	0	0
3.3 Reinsurance ceded	0	0	0	0	0	0	0	0	0	0	0	0	0	0
3.4 Net	34,571,933	0	0	0	0	0	0	34,571,933	0	0	0	0	0	0
4. Claim reserve December 31, current year from Part 2D:														
4.1 Direct	0													
4.2 Reinsurance assumed	0													
4.3 Reinsurance ceded	0													
4.4 Net	0	0	0	0	0	0	0	0	0	0	0	0	0	0
5. Accrued medical incentive pools and bonuses, current year	931,193							931,193						
6. Net health care receivables (a)	1,504,602							1,504,602						
7. Amounts recoverable from reinsurers December 31, current year	0													
8. Claim liability December 31, prior year from Part 2A:														
8.1 Direct	25,907,920			0	0	0	0	25,907,920	0	0	0	0	0	0
8.2 Reinsurance assumed	0			0	0	0	0	0	0	0	0	0	0	0
8.3 Reinsurance ceded	0			0	0	0	0	0	0	0	0	0	0	0
8.4 Net	25,907,920	0	0	0	0	0	0	25,907,920	0	0	0	0	0	0
9. Claim reserve December 31, prior year from Part 2D:														
9.1 Direct	0													
9.2 Reinsurance assumed	0													
9.3 Reinsurance ceded	0													
9.4 Net	0	0	0	0	0	0	0	0	0	0	0	0	0	0
10. Accrued medical incentive pools and bonuses, prior year	350,039							350,039						
11. Amounts recoverable from reinsurers December 31, prior year	0													
12. Incurred Benefits:														
12.1 Direct	211,536,406	0	0	0	0	0	0	211,536,406	0	0	0	0	0	0
12.2 Reinsurance assumed	0	0	0	0	0	0	0	0	0	0	0	0	0	0
12.3 Reinsurance ceded	0	0	0	0	0	0	0	0	0	0	0	0	0	0
12.4 Net	211,536,406	0	0	0	0	0	0	211,536,406	0	0	0	0	0	0
13. Incurred medical incentive pools and bonuses	3,413,711	0	0	0	0	0	0	3,413,711	0	0	0	0	0	0

(a) Excludes \$23,473 loans or advances to providers not yet expensed.

ANNUAL STATEMENT FOR THE YEAR 2022 OF THE AMH Health, LLC

UNDERWRITING AND INVESTMENT EXHIBIT

PART 2A - CLAIMS LIABILITY END OF CURRENT YEAR

	1	Comprehensive (Hospital & Medical)		4	5	6	7	8	9	10	11	12	13	14
	Total	2 Individual	3 Group	Medicare Supplement	Dental Only	Vision Only	Federal Employees Health Benefits Plan	Title XVIII Medicare	Title XIX Medicaid	Credit A&H	Disability Income	Long-Term Care	Other Health	Other Non-Health
1. Reported in Process of Adjustment:														
1.1 Direct	17,371,112							17,371,112						
1.2 Reinsurance assumed	0													
1.3 Reinsurance ceded	0													
1.4 Net	17,371,112	0	0	0	0	0	0	17,371,112	0	0	0	0	0	0
2. Incurred but Unreported:														
2.1 Direct	17,200,821							17,200,821						
2.2 Reinsurance assumed	0													
2.3 Reinsurance ceded	0													
2.4 Net	17,200,821	0	0	0	0	0	0	17,200,821	0	0	0	0	0	0
3. Amounts Withheld from Paid Claims and Capitations:														
3.1 Direct	0													
3.2 Reinsurance assumed	0													
3.3 Reinsurance ceded	0													
3.4 Net	0	0	0	0	0	0	0	0	0	0	0	0	0	0
4. TOTALS:														
4.1 Direct	34,571,933	0	0	0	0	0	0	34,571,933	0	0	0	0	0	0
4.2 Reinsurance assumed	0	0	0	0	0	0	0	0	0	0	0	0	0	0
4.3 Reinsurance ceded	0	0	0	0	0	0	0	0	0	0	0	0	0	0
4.4 Net	34,571,933	0	0	0	0	0	0	34,571,933	0	0	0	0	0	0

ANNUAL STATEMENT FOR THE YEAR 2022 OF THE AMH Health, LLC

UNDERWRITING AND INVESTMENT EXHIBIT

PART 2B - ANALYSIS OF CLAIMS UNPAID - PRIOR YEAR - NET OF REINSURANCE

Line of Business	Claims Paid During the Year		Claim Reserve and Claim Liability December 31 of Current Year		5 Claims Incurred In Prior Years (Columns 1 + 3)	6 Estimated Claim Reserve and Claim Liability December 31 of Prior Year
	1	2	3	4		
	On Claims Incurred Prior to January 1 of Current Year	On Claims Incurred During the Year	On Claims Unpaid December 31 of Prior Year	On Claims Incurred During the Year		
1. Comprehensive (hospital and medical) individual					0	
2. Comprehensive (hospital and medical) group					0	
3. Medicare Supplement					0	0
4. Dental Only					0	0
5. Vision Only					0	0
6. Federal Employees Health Benefits Plan					0	0
7. Title XVIII - Medicare	24,433,219	182,212,244	2,021,305	32,550,628	26,454,524	25,907,920
8. Title XIX - Medicaid					0	0
9. Credit A&H					0	
10. Disability Income					0	
11. Long-Term Care					0	
12. Other health					0	0
13. Health subtotal (Lines 1 to 12)	24,433,219	182,212,244	2,021,305	32,550,628	26,454,524	25,907,920
14. Health care receivables (a)	5,120	3,767,950	0	0	5,120	0
15. Other non-health					0	0
16. Medical incentive pools and bonus amounts	1,090,014	1,742,543	35,776	895,417	1,125,790	350,039
17. Totals (Lines 13 - 14 + 15 + 16)	25,518,113	180,186,837	2,057,081	33,446,045	27,575,194	26,257,959

(a) Excludes \$ 23,473 loans or advances to providers not yet expensed.

ANNUAL STATEMENT FOR THE YEAR 2022 OF THE AMH Health, LLC

UNDERWRITING AND INVESTMENT EXHIBIT

PART 2C - DEVELOPMENT OF PAID AND INCURRED HEALTH CLAIMS

(\$000 Omitted)

Section A - Paid Health Claims - Title XVIII

Year in Which Losses Were Incurred	Cumulative Net Amounts Paid				
	1 2018	2 2019	3 2020	4 2021	5 2022
1. Prior	0	0	0	0	0
2. 2018					0
3. 2019	XXX				0
4. 2020	XXX	XXX	51,237	61,549	61,855
5. 2021	XXX	XXX	XXX	125,701	150,913
6. 2022	XXX	XXX	XXX	XXX	180,187

Section B - Incurred Health Claims - Title XVIII

Year in Which Losses Were Incurred	Sum of Cumulative Net Amount Paid and Claim Liability, Claim Reserve and Medical Incentive Pool and Bonuses Outstanding at End of Year				
	1 2018	2 2019	3 2020	4 2021	5 2022
1. Prior	0	0	0	0	0
2. 2018					0
3. 2019	XXX				0
4. 2020	XXX	XXX	64,030	61,796	61,843
5. 2021	XXX	XXX	XXX	151,712	152,982
6. 2022	XXX	XXX	XXX	XXX	213,633

Section C - Incurred Year Health Claims and Claims Adjustment Expense Ratio - Title XVIII

Years in which Premiums were Earned and Claims were Incurred	1 Premiums Earned	2 Claims Payment	3 Claim Adjustment Expense Payments	4 (Col. 3/2) Percent	5 Claim and Claim Adjustment Expense Payments (Col. 2 + 3)	6 (Col. 5/1) Percent	7 Claims Unpaid	8 Unpaid Claims Adjustment Expenses	9 Total Claims and Claims Adjustment Expense Incurred (Col. 5+7+8)	10 (Col. 9/1) Percent
1. 2018		0	0	0.0	0	0.0	0	0	0	0.0
2. 2019		0	0	0.0	0	0.0	0	0	0	0.0
3. 2020	76,116	61,855	3,234	5.2	65,089	85.5	(12)	0	65,077	85.5
4. 2021	169,264	150,913	8,862	5.9	159,775	94.4	2,069	41	161,885	95.6
5. 2022	224,449	180,187	7,614	4.2	187,801	83.7	33,446	664	221,911	98.9

ANNUAL STATEMENT FOR THE YEAR 2022 OF THE AMH Health, LLC

UNDERWRITING AND INVESTMENT EXHIBIT

PART 2C - DEVELOPMENT OF PAID AND INCURRED HEALTH CLAIMS

(\$000 Omitted)

Section A - Paid Health Claims - Grand Total

Year in Which Losses Were Incurred	Cumulative Net Amounts Paid				
	1 2018	2 2019	3 2020	4 2021	5 2022
1. Prior	0	0	0	0	0
2. 2018	0	0	0	0	0
3. 2019	XXX	0	0	0	0
4. 2020	XXX	XXX	51,237	61,549	61,855
5. 2021	XXX	XXX	XXX	125,701	150,913
6. 2022	XXX	XXX	XXX	XXX	180,187

Section B - Incurred Health Claims - Grand Total

Year in Which Losses Were Incurred	Sum of Cumulative Net Amount Paid and Claim Liability, Claim Reserve and Medical Incentive Pool and Bonuses Outstanding at End of Year				
	1 2018	2 2019	3 2020	4 2021	5 2022
1. Prior	0	0	0	0	0
2. 2018	0	0	0	0	0
3. 2019	XXX	0	0	0	0
4. 2020	XXX	XXX	64,030	61,796	61,843
5. 2021	XXX	XXX	XXX	151,712	152,982
6. 2022	XXX	XXX	XXX	XXX	213,633

Section C - Incurred Year Health Claims and Claims Adjustment Expense Ratio - Grand Total

Years in which Premiums were Earned and Claims were Incurred	1 Premiums Earned	2 Claims Payment	3 Claim Adjustment Expense Payments	4 (Col. 3/2) Percent	5 Claim and Claim Adjustment Expense Payments (Col. 2 + 3)	6 (Col. 5/1) Percent	7 Claims Unpaid	8 Unpaid Claims Adjustment Expenses	9 Total Claims and Claims Adjustment Expense Incurred (Col. 5+7+8)	10 (Col. 9/1) Percent
1. 2018	0	0	0	0.0	0	0.0	0	0	0	0.0
2. 2019	0	0	0	0.0	0	0.0	0	0	0	0.0
3. 2020	76,116	61,855	3,234	5.2	65,089	85.5	(12)	0	65,077	85.5
4. 2021	169,264	150,913	8,862	5.9	159,775	94.4	2,069	41	161,885	95.6
5. 2022	224,449	180,187	7,614	4.2	187,801	83.7	33,446	664	221,911	98.9

12.GT

ANNUAL STATEMENT FOR THE YEAR 2022 OF THE AMH Health, LLC

UNDERWRITING AND INVESTMENT EXHIBIT

PART 2D - AGGREGATE RESERVE FOR ACCIDENT AND HEALTH CONTRACTS ONLY

	1 Total	Comprehensive (Hospital & Medical)		4 Medicare Supplement	5 Dental Only	6 Vision Only	7 Federal Employees Health Benefits Plan	8 Title XVIII Medicare	9 Title XIX Medicaid	10 Credit A&H	11 Disability Income	12 Long-Term Care	13 Other
		2 Individual	3 Group										
1. Unearned premium reserves	0												
2. Additional policy reserves (a)	7,465,532							7,465,532					
3. Reserve for future contingent benefits	0												
4. Reserve for rate credits or experience rating refunds (including \$ 7,465,532 for investment income) ..	1,216,049							1,216,049					
5. Aggregate write-ins for other policy reserves	7,683	0	0	0	0	0	0	7,683	0	0	0	0	0
6. Totals (gross)	8,689,264	0	0	0	0	0	0	8,689,264	0	0	0	0	0
7. Reinsurance ceded	0												
8. Totals (Net)(Page 3, Line 4)	8,689,264	0	0	0	0	0	0	8,689,264	0	0	0	0	0
9. Present value of amounts not yet due on claims	0												
10. Reserve for future contingent benefits	0												
11. Aggregate write-ins for other claim reserves	0	0	0	0	0	0	0	0	0	0	0	0	0
12. Totals (gross)	0	0	0	0	0	0	0	0	0	0	0	0	0
13. Reinsurance ceded	0												
14. Totals (Net)(Page 3, Line 7)	0	0	0	0	0	0	0	0	0	0	0	0	0
DETAILS OF WRITE-INS													
0501. Risk adjustment payable	7,683							7,683					
0502.													
0503.													
0598. Summary of remaining write-ins for Line 5 from overflow page	0	0	0	0	0	0	0	0	0	0	0	0	0
0599. Totals (Lines 0501 thru 0503 plus 0598) (Line 5 above)	7,683	0	0	0	0	0	0	7,683	0	0	0	0	0
1101.													
1102.													
1103.													
1198. Summary of remaining write-ins for Line 11 from overflow page	0	0	0	0	0	0	0	0	0	0	0	0	0
1199. Totals (Lines 1101 thru 1103 plus 1198) (Line 11 above)	0	0	0	0	0	0	0	0	0	0	0	0	0

(a) Includes \$7,465,532 premium deficiency reserve.

ANNUAL STATEMENT FOR THE YEAR 2022 OF THE AMH Health, LLC
UNDERWRITING AND INVESTMENT EXHIBIT

PART 3 - ANALYSIS OF EXPENSES

	Claim Adjustment Expenses		3 General Administrative Expenses	4 Investment Expenses	5 Total
	1 Cost Containment Expenses	2 Other Claim Adjustment Expenses			
1. Rent (\$ for occupancy of own building)	116,046	81,529	54,228	0	251,803
2. Salary, wages and other benefits	3,891,840	1,610,147	4,981,074	0	10,483,061
3. Commissions (less \$ ceded plus \$ assumed)	0	0	5,982,034	0	5,982,034
4. Legal fees and expenses	1,649	165	308,225	0	310,039
5. Certifications and accreditation fees	0	0	0	0	0
6. Auditing, actuarial and other consulting services ...	356,366	224,225	665,873	0	1,246,464
7. Traveling expenses	3,801	1,264	68,754	0	73,819
8. Marketing and advertising	13,771	24,682	3,966,213	0	4,004,666
9. Postage, express and telephone	32,286	37,799	511,376	0	581,461
10. Printing and office supplies	21,150	3,737	426,785	0	451,672
11. Occupancy, depreciation and amortization	100	181	86,210	0	86,491
12. Equipment	0	0	0	0	0
13. Cost or depreciation of EDP equipment and software	(26,952)	26,541	207,771	0	207,360
14. Outsourced services including EDP, claims, and other services	478,594	618,809	3,501,220	0	4,598,623
15. Boards, bureaus and association fees	604	(10)	17,174	0	17,768
16. Insurance, except on real estate	0	0	107,547	0	107,547
17. Collection and bank service charges	0	0	13,786	0	13,786
18. Group service and administration fees	50,760	8,225	(27,045)	0	31,940
19. Reimbursements by uninsured plans	0	0	0	0	0
20. Reimbursements from fiscal intermediaries	0	0	0	0	0
21. Real estate expenses	1,252	137	81,653	0	83,042
22. Real estate taxes	0	0	11,211	0	11,211
23. Taxes, licenses and fees:					
23.1 State and local insurance taxes	0	0	547,227	0	547,227
23.2 State premium taxes	0	0	0	0	0
23.3 Regulatory authority licenses and fees	1,199	353	169,459	0	171,011
23.4 Payroll taxes	236,715	100,913	290,637	0	628,265
23.5 Other (excluding federal income and real estate taxes)	0	0	9,823	0	9,823
24. Investment expenses not included elsewhere	0	0	0	26,158	26,158
25. Aggregate write-ins for expenses	152,545	1,063,943	359,680	0	1,576,168
26. Total expenses incurred (Lines 1 to 25)	5,331,726	3,802,640	22,340,915	26,158	(a) 31,501,439
27. Less expenses unpaid December 31, current year	0	705,226	13,102	0	718,328
28. Add expenses unpaid December 31, prior year	0	500,564	4,180	0	504,744
29. Amounts receivable relating to uninsured plans, prior year	0	0	3,446,916	0	3,446,916
30. Amounts receivable relating to uninsured plans, current year	0	0	4,628,368	0	4,628,368
31. Total expenses paid (Lines 26 minus 27 plus 28 minus 29 plus 30)	5,331,726	3,597,978	23,513,445	26,158	32,469,307
DETAILS OF WRITE-INS					
2501. Miscellaneous expenses	152,545	1,063,943	359,680	0	1,576,168
2502.					
2503.					
2598. Summary of remaining write-ins for Line 25 from overflow page	0	0	0	0	0
2599. Totals (Lines 2501 thru 2503 plus 2598)(Line 25 above)	152,545	1,063,943	359,680	0	1,576,168

(a) Includes management fees of \$ 23,580,007 to affiliates and \$ to non-affiliates.

ANNUAL STATEMENT FOR THE YEAR 2022 OF THE AMH Health, LLC

EXHIBIT OF NET INVESTMENT INCOME

	1 Collected During Year	2 Earned During Year
1. U.S. government bonds	(a) 26,957	47,427
1.1 Bonds exempt from U.S. tax	(a)	
1.2 Other bonds (unaffiliated)	(a) (16,052)	133,300
1.3 Bonds of affiliates	(a) 0	0
2.1 Preferred stocks (unaffiliated)	(b) 0	0
2.11 Preferred stocks of affiliates	(b) 0	0
2.2 Common stocks (unaffiliated)	12,491	12,491
2.21 Common stocks of affiliates	0	0
3. Mortgage loans	(c) 0	0
4. Real estate	(d) 0	0
5. Contract Loans	0	0
6. Cash, cash equivalents and short-term investments	(e) 581,313	581,313
7. Derivative instruments	(f) 0	0
8. Other invested assets	0	0
9. Aggregate write-ins for investment income	28,437	28,624
10. Total gross investment income	633,146	803,155
11. Investment expenses		(g) 26,158
12. Investment taxes, licenses and fees, excluding federal income taxes		(g) 0
13. Interest expense		(h)
14. Depreciation on real estate and other invested assets		(i)
15. Aggregate write-ins for deductions from investment income		0
16. Total deductions (Lines 11 through 15)		26,158
17. Net investment income (Line 10 minus Line 16)		776,997
DETAILS OF WRITE-INS		
0901. Miscellaneous income	11	11
0902. Securities lending	28,426	28,613
0903.		
0998. Summary of remaining write-ins for Line 9 from overflow page	0	0
0999. Totals (Lines 0901 thru 0903 plus 0998) (Line 9, above)	28,437	28,624
1501.		
1502.		
1503.		
1598. Summary of remaining write-ins for Line 15 from overflow page		0
1599. Totals (Lines 1501 thru 1503 plus 1598) (Line 15, above)		0

- (a) Includes \$ 146,017 accrual of discount less \$ 768,168 amortization of premium and less \$ 154,915 paid for accrued interest on purchases.
- (b) Includes \$ 0 accrual of discount less \$ 0 amortization of premium and less \$ 0 paid for accrued dividends on purchases.
- (c) Includes \$ 0 accrual of discount less \$ 0 amortization of premium and less \$ paid for accrued interest on purchases.
- (d) Includes \$ for company's occupancy of its own buildings; and excludes \$ interest on encumbrances.
- (e) Includes \$.63 accrual of discount less \$ 0 amortization of premium and less \$.554 paid for accrued interest on purchases.
- (f) Includes \$ accrual of discount less \$ amortization of premium.
- (g) Includes \$ investment expenses and \$ investment taxes, licenses and fees, excluding federal income taxes, attributable to segregated and Separate Accounts.
- (h) Includes \$ interest on surplus notes and \$ interest on capital notes.
- (i) Includes \$ 0 depreciation on real estate and \$ depreciation on other invested assets.

EXHIBIT OF CAPITAL GAINS (LOSSES)

	1	2	3	4	5
	Realized Gain (Loss) On Sales or Maturity	Other Realized Adjustments	Total Realized Capital Gain (Loss) (Columns 1 + 2)	Change in Unrealized Capital Gain (Loss)	Change in Unrealized Foreign Exchange Capital Gain (Loss)
1. U.S. Government bonds	(84,765)	0	(84,765)	0	0
1.1 Bonds exempt from U.S. tax					
1.2 Other bonds (unaffiliated)	681	0	681	0	0
1.3 Bonds of affiliates	0	0	0	0	0
2.1 Preferred stocks (unaffiliated)	0	0	0	0	0
2.11 Preferred stocks of affiliates	0	0	0	0	0
2.2 Common stocks (unaffiliated)	(135,663)	0	(135,663)	0	0
2.21 Common stocks of affiliates	0	0	0	(3,686,978)	0
3. Mortgage loans		0	0	0	0
4. Real estate		0	0	0	0
5. Contract loans		0	0	0	0
6. Cash, cash equivalents and short-term investments	(357)	0	(357)	0	0
7. Derivative instruments		0	0	0	0
8. Other invested assets		0	0	0	0
9. Aggregate write-ins for capital gains (losses)	0	0	0	0	0
10. Total capital gains (losses)	(220,104)	0	(220,104)	(3,686,978)	0
DETAILS OF WRITE-INS					
0901.					
0902.					
0903.					
0998. Summary of remaining write-ins for Line 9 from overflow page	0	0	0	0	0
0999. Totals (Lines 0901 thru 0903 plus 0998) (Line 9, above)	0	0	0	0	0

ANNUAL STATEMENT FOR THE YEAR 2022 OF THE AMH Health, LLC

EXHIBIT OF NON-ADMITTED ASSETS

	1	2	3
	Current Year Total Nonadmitted Assets	Prior Year Total Nonadmitted Assets	Change in Total Nonadmitted Assets (Col. 2 - Col. 1)
1. Bonds (Schedule D)			0
2. Stocks (Schedule D):			
2.1 Preferred stocks			0
2.2 Common stocks			0
3. Mortgage loans on real estate (Schedule B):			
3.1 First liens			0
3.2 Other than first liens.....			0
4. Real estate (Schedule A):			
4.1 Properties occupied by the company			0
4.2 Properties held for the production of income.....			0
4.3 Properties held for sale			0
5. Cash (Schedule E - Part 1), cash equivalents (Schedule E - Part 2) and short-term investments (Schedule DA)			0
6. Contract loans			0
7. Derivatives (Schedule DB)			0
8. Other invested assets (Schedule BA)			0
9. Receivables for securities			0
10. Securities lending reinvested collateral assets (Schedule DL)			0
11. Aggregate write-ins for invested assets	0	0	0
12. Subtotals, cash and invested assets (Lines 1 to 11)	0	0	0
13. Title plants (for Title insurers only)			0
14. Investment income due and accrued			0
15. Premiums and considerations:			
15.1 Uncollected premiums and agents' balances in the course of collection	130,903	59,437	(71,466)
15.2 Deferred premiums, agents' balances and installments booked but deferred and not yet due ..			0
15.3 Accrued retrospective premiums and contracts subject to redetermination			0
16. Reinsurance:			
16.1 Amounts recoverable from reinsurers			0
16.2 Funds held by or deposited with reinsured companies			0
16.3 Other amounts receivable under reinsurance contracts			0
17. Amounts receivable relating to uninsured plans			0
18.1 Current federal and foreign income tax recoverable and interest thereon			0
18.2 Net deferred tax asset			0
19. Guaranty funds receivable or on deposit			0
20. Electronic data processing equipment and software			0
21. Furniture and equipment, including health care delivery assets			0
22. Net adjustment in assets and liabilities due to foreign exchange rates			0
23. Receivable from parent, subsidiaries and affiliates			0
24. Health care and other amounts receivable	654,595	163,195	(491,400)
25. Aggregate write-ins for other than invested assets	0	257,109	257,109
26. Total assets excluding Separate Accounts, Segregated Accounts and Protected Cell Accounts (Lines 12 to 25)	785,498	479,741	(305,757)
27. From Separate Accounts, Segregated Accounts and Protected Cell Accounts			0
28. Total (Lines 26 and 27)	785,498	479,741	(305,757)
DETAILS OF WRITE-INS			
1101.			
1102.			
1103.			
1198. Summary of remaining write-ins for Line 11 from overflow page	0	0	0
1199. Totals (Lines 1101 thru 1103 plus 1198)(Line 11 above)	0	0	0
2501. Prepaid Expense		257,109	257,109
2502.			
2503.			
2598. Summary of remaining write-ins for Line 25 from overflow page	0	0	0
2599. Totals (Lines 2501 thru 2503 plus 2598)(Line 25 above)	0	257,109	257,109

EXHIBIT 1 - ENROLLMENT BY PRODUCT TYPE FOR HEALTH BUSINESS ONLY

Source of Enrollment	Total Members at End of					6 Current Year Member Months
	1 Prior Year	2 First Quarter	3 Second Quarter	4 Third Quarter	5 Current Year	
1. Health Maintenance Organizations	14,152	16,557	16,854	17,090	17,201	202,097
2. Provider Service Organizations						
3. Preferred Provider Organizations						
4. Point of Service						
5. Indemnity Only						
6. Aggregate write-ins for other lines of business.....	0	0	0	0	0	0
7. Total	14,152	16,557	16,854	17,090	17,201	202,097
DETAILS OF WRITE-INS						
0601.						
0602.						
0603.						
0698. Summary of remaining write-ins for Line 6 from overflow page	0	0	0	0	0	0
0699. Totals (Lines 0601 thru 0603 plus 0698) (Line 6 above)	0	0	0	0	0	0

ANNUAL STATEMENT FOR THE YEAR 2022 OF THE AMH Health, LLC.
NOTES TO FINANCIAL STATEMENTS

1. Summary of Significant Accounting Policies and Going Concern

A. Accounting Practices

The accompanying financial statements of AMH Health, LLC (the “Company”) have been prepared in conformity with the National Association of Insurance Commissioners’ (“NAIC”) *Annual Statement Instructions* and in accordance with accounting practices prescribed by the NAIC *Accounting Practices and Procedures Manual* (“NAIC SAP”), subject to any deviations prescribed or permitted by the Maine Bureau of Insurance (“Bureau”).

A reconciliation of the Company’s net income (loss) and capital and surplus between NAIC SAP and practices prescribed and permitted by the Bureau is shown below:

	<u>SSAP #</u>	<u>F/S Page</u>	<u>F/S Line #</u>	<u>2022</u>	<u>2021</u>
<u>Net Income</u>					
(1) AMH Health, LLC. state basis (Page 4, Line 32, Columns 2 & 3)	XXX	XXX	XXX	\$(28,631,946)	\$ (5,823,045)
(2) State Prescribed Practices that is an increase/(decrease) from NAIC SAP:				—	—
(3) State Permitted Practices that is an increase/(decrease) from NAIC SAP:				—	—
(4) NAIC SAP (1-2-3=4)	XXX	XXX	XXX	<u>\$(28,631,946)</u>	<u>\$ (5,823,045)</u>
<u>Surplus</u>					
(5) AMH Health, LLC. state basis (Page 3, Line 33, Columns 3 & 4)	XXX	XXX	XXX	\$ 38,884,238	\$ 30,741,705
(6) State Prescribed Practices that is an increase/(decrease) from NAIC SAP:				—	—
(7) State Permitted Practices that is an increase/(decrease) from NAIC SAP:				—	—
(8) NAIC SAP (5-6-7=8)	XXX	XXX	XXX	<u>\$ 38,884,238</u>	<u>\$ 30,741,705</u>

B. Use of Estimates in the Preparation of the Financial Statements

Preparation of financial statements requires management to make estimates and assumptions that affect the amounts reported in the financial statements and accompanying notes. Actual results could differ from those estimates.

C. Accounting Policies

Health premiums are earned over the term of the related insurance policies. Premiums written are reported net of excess loss reinsurance ceded and experience rating refunds. Unearned premium reserves are established to cover the unexpired portion of premiums written and are computed by pro rata methods for direct business. Premiums paid by subscribers prior to the effective date are recorded on the balance sheet as premiums received in advance and are subsequently credited to income as earned during the coverage period. Premium rates for certain lines of business are subject to approval by the Bureau. Expenses incurred in connection with acquiring new insurance business, including acquisition costs such as sales commissions, are charged to operations as incurred. All other costs, including underwriting expenses, are charged to operations as incurred.

ANNUAL STATEMENT FOR THE YEAR 2022 OF THE AMH Health, LLC.
NOTES TO FINANCIAL STATEMENTS

In addition, the Company uses the following accounting policies:

- (1) Short-term investments include investments with maturities of less than one year and more than three months at the date of acquisition and are reported at amortized cost, which approximates fair value. Non-investment grade short-term investments are stated at the lower of amortized cost or fair value.
- (2) Investment grade bonds not backed by other loans are stated at amortized cost, with amortization calculated based on the modified scientific method, using lower of yield to call or yield to maturity. Non-investment grade bonds are stated at the lower of amortized cost or fair value as determined by various third-party pricing sources. The Company holds 17 SVO-Identified bond exchange traded funds (“ETFs”) reported as bonds on Schedule D-1 in which the Company has made an irrevocable decision to report at systematic value. Systematic valuation has been consistently applied to these ETFs held at December 31, 2022 and previous periods.
- (3) The Company has no investments in common stocks of unaffiliated companies.
- (4) The Company has no investments in preferred stocks.
- (5) The Company has no mortgage loans - real estate.
- (6) The Company has no loan-backed securities.
- (7) The Company owns 100% of the common stock of AMH Health Plans of Maine, Inc. (“AMH Health Plans of Maine”), a Maine domiciled stock insurance company. The Company's investment is carried at its statutory book value. The company reports net change in the equity of its subsidiary as a change in net unrealized gains and losses.
- (8) The Company has no investments in joint ventures, partnerships or limited liability companies.
- (9) The Company has no derivative instruments.
- (10) The Company recognizes losses from other-than-temporary impairments (“OTTI”) of investments in accordance with Statements of Standard Accounting Practice (“SSAP”) No. 26R, *Bonds*; and SSAP No. 30, *Common Stock*; and SSAP No. 32R, *Preferred Stock*.
- (11) The Company does not anticipate investment income as a factor in premium deficiency calculations.
- (12) Unpaid claims and claims adjustment expenses include management’s best estimate of amounts based on historical claim development patterns and certain individual case estimates. The established liability considers health benefit provisions, business practices, economic conditions and other factors that may materially affect the cost, frequency and severity of claims. Liabilities for unpaid claims and claim adjustment expenses are based on assumptions and estimates, and while management believes such estimates are reasonable, the ultimate liability may be in excess of or less than the amount provided. The methods for making such estimates and for establishing the resulting liabilities are continually reviewed and changes in estimates are incorporated into current period estimates.
- (13) The Company has not modified its capitalization policy from the prior period.

D. Going Concern

Not applicable.

2. Accounting Changes and Corrections of Errors

There were no accounting changes or corrections of errors during the years ended December 31, 2022 and 2021.

3. Business Combinations and Goodwill

A. Business Combinations and Goodwill

Not applicable.

ANNUAL STATEMENT FOR THE YEAR 2022 OF THE AMH Health, LLC.
NOTES TO FINANCIAL STATEMENTS

B. Statutory Merger

Not applicable.

C. Assumption Reinsurance

Not applicable.

D. Impairment Loss

Not applicable.

4. Discontinued Operations

The Company had no operations that were discontinued during 2022 or 2021.

5. Investments

A. Mortgage Loans, including Mezzanine Real Estate Loans

The Company did not have investments in mortgage loans at December 31, 2022 or 2021.

B. Debt Restructuring

The Company did not have invested assets that were restructured debt at December 31, 2022 or 2021.

C. Reverse Mortgages

The Company did not have investments in reverse mortgages at December 31, 2022 or 2021.

D. Loan-Backed Securities

(1) Prepayment assumptions for single-class and multi-class mortgage-backed and asset-backed securities were obtained from broker-dealer survey values or internal estimates. The Company used various third-party pricing sources in determining the market value of its loan-backed securities.

(2) The Company did not recognize OTTI on its loan-backed securities during the years ended December 31, 2022 and 2021.

(3) The Company did not recognize OTTI on its loan-backed securities at December 31, 2022 and 2021.

(4) All impaired securities (fair value is less than cost or amortized cost) for which an other-than-temporary impairment has not been recognized in earnings as a realized loss (including securities with a recognized other-than-temporary impairment for non-interest related declines when a non-recognized interest related impairment remains):

a. The aggregate amount of unrealized losses:

1. Less than 12 Months	\$	(131,086)
2. 12 Months or Longer	\$	—

b. The aggregate related fair value of securities with unrealized losses:

1. Less than 12 Months	6,190,519
2. 12 Months or Longer	—

(5) The Company's bond portfolio is sensitive to interest rate fluctuations, which impact the fair value of individual securities. Unrealized losses on bonds were primarily caused by the effects of the interest rate environment and the widening of credit spreads on certain securities. The Company currently has the ability and intent to hold these securities until their full cost can be recovered. Therefore, the Company does not believe the unrealized losses represent an OTTI at December 31, 2022 or 2021.

ANNUAL STATEMENT FOR THE YEAR 2022 OF THE AMH Health, LLC.
NOTES TO FINANCIAL STATEMENTS

(6) The Company had no impaired loan-backed securities for which an OTTI had not been recognized in earnings at December 31, 2022 and 2021.

E. Dollar Repurchase Agreements and/or Securities Lending Transactions

(1) The Company did not enter into repurchase agreements at December 31, 2022 or 2021.

(2) The Company participates in a securities lending program whereby marketable securities in its investment portfolio are transferred to independent brokers or dealers based on, among other things, their creditworthiness in exchange for collateral initially equal to at least 102% of the market value of the loaned securities. The Company receives the collateral in cash or securities, and if cash is received the cash collateral is thereafter invested according to guidelines of the Company's Investment Policy.

(3) Collateral Received

a. Aggregate amount collateral received

	Fair Value
1. Securities Lending	
(a) Open	\$ —
(b) 30 days or less	—
(c) 31 to 60 days	—
(d) 61 to 90 days	—
(e) Greater than 90 days	—
(f) Sub-total	\$ —
(g) Securities received	2,451,416
(h) Total collateral received	\$ 2,451,416

2. Dollar repurchase agreement - Not applicable.

b. The fair value of that collateral and of the portion of that collateral that it has sold or repledged \$ 2,451,416

c. The Company receives cash collateral in an amount in excess of fair value of the securities lent. The Company reinvests the cash collateral according to guidelines of the Company's Investment Policy.

(4) The Company does not have any securities lending transactions administered by an affiliated agent.

ANNUAL STATEMENT FOR THE YEAR 2022 OF THE AMH Health, LLC.
NOTES TO FINANCIAL STATEMENTS

(5) Collateral Reinvestment

a. Aggregate amount collateral reinvested

	<u>Amortized Cost</u>	<u>Fair Value</u>
1. Securities Lending		
(a) Open	\$ —	\$ —
(b) 30 days or less	—	—
(c) 31 to 60 days	—	—
(d) 61 to 90 days	—	—
(e) 91 to 120 days	—	—
(f) 121 to 180 days	—	—
(g) 181 to 365 days	—	—
(h) 1 to 2 years	—	—
(i) 2 to 3 years	—	—
(j) Greater than 3 years	—	—
(k) Sub-total	\$ —	\$ —
(l) Securities received	2,451,416	2,451,416
(m) Total collateral reinvested	\$ 2,451,416	\$ 2,451,416

2. Dollar repurchase agreement - Not applicable.

b. Not applicable.

(6) Not applicable.

(7) Not applicable.

F. Repurchase Agreements Transactions Accounted for as Secured Borrowing

The Company did not enter into repurchase agreement transactions accounted for as secured borrowing at December 31, 2022 or 2021.

G. Reverse Repurchase Agreements Transactions Accounted for as Secured Borrowing

The Company did not enter into reverse repurchase agreement transactions accounted for as a secured borrowing at December 31, 2022 or 2021.

H. Repurchase Agreements Transactions Accounted for as a Sale

The Company did not enter into repurchase agreement transactions accounted for as a sale at December 31, 2022 or 2021.

I. Reverse Repurchase Agreements Transactions Accounted for as a Sale

The Company did not enter into reverse repurchase agreement transactions accounted for as a sale at December 31, 2022 or 2021.

J. Real Estate

The Company did not have investments in real estate and did not engage in retail land sales operations during 2022 or 2021.

K. Investments in Low-Income Housing Tax Credits

The Company did not invest in properties generating low-income housing tax credits during 2022 or 2021.

ANNUAL STATEMENT FOR THE YEAR 2022 OF THE AMH Health, LLC.
NOTES TO FINANCIAL STATEMENTS

L. Restricted Assets

(1) Restricted assets (including pledged)

Restricted Asset Category	1	2	3	4	5	6	7
	Total Gross (Admitted & Nonadmitted) Restricted from Current Year	Total Gross (Admitted & Nonadmitted) Restricted from Prior Year	Increase/ (Decrease) (1 minus 2)	Total Current Year Nonadmitted Restricted	Total Current Year Admitted Restricted (1 minus 4)	Gross Admitted and Nonadmitted Restricted to Total Assets (a)	Admitted Restricted to Total Admitted Assets (b)
a. Subject to contractual obligation for which liability is not shown	\$ —	\$ —	\$ —	\$ —	\$ —	0.00 %	0.00 %
b. Collateral held under security lending agreements	2,451,416	1,561,239	890,177	—	2,451,416	2.52 %	2.54 %
c. Subject to repurchase agreements	—	—	—	—	—	0.00 %	0.00 %
d. Subject to reverse repurchase agreements	—	—	—	—	—	0.00 %	0.00 %
e. Subject to dollar repurchase agreements	—	—	—	—	—	0.00 %	0.00 %
f. Subject to dollar reverse repurchase agreements	—	—	—	—	—	0.00 %	0.00 %
g. Placed under option contracts	—	—	—	—	—	0.00 %	0.00 %
h. Letter stock or securities restricted as to sale-excluding FHLB capital stock	—	—	—	—	—	0.00 %	0.00 %
i. FHLB capital stock	—	—	—	—	—	0.00 %	0.00 %
j. On deposit with states	112,993	116,263	(3,270)	—	112,993	0.12 %	0.12 %
k. On deposit with other regulatory bodies	—	—	—	—	—	0.00 %	0.00 %
l. Pledged as collateral to FHLB (including assets backing funding agreements)	—	—	—	—	—	0.00 %	0.00 %
m. Pledged as collateral not captured in other categories	—	—	—	—	—	0.00 %	0.00 %
n. Other restricted assets	—	—	—	—	—	0.00 %	0.00 %
o. Total Restricted Assets	\$ 2,564,409	\$ 1,677,502	\$ 886,907	\$ —	\$ 2,564,409	2.63 %	2.65 %

(a) Column 1 divided by Asset Page, Column 1, Line 28

(b) Column 5 divided by Asset Page, Column 3, Line 28

(2) Not applicable.

(3) Not applicable.

ANNUAL STATEMENT FOR THE YEAR 2022 OF THE AMH Health, LLC.
NOTES TO FINANCIAL STATEMENTS

(4)

Collateral Received and Reflected as Assets Within the Reporting Entity's Financial Statements

Collateral Assets	1	2	3	4
	Book/ Adjusted Carrying Value (BACV)	Fair Value	% of BACV to Total Assets (Admitted and Nonadmitted*)	% of BACV to Total Admitted Assets **
a. Cash	\$ —	\$ —	— %	— %
b. Schedule D, Part 1	—	—	—	—
c. Schedule D, Part 2 Section 1	—	—	—	—
d. Schedule D, Part 2 Section 2	—	—	—	—
e. Schedule B	—	—	—	—
f. Schedule A	—	—	—	—
g. Schedule BA, Part 1	—	—	—	—
h. Schedule DL, Part 1	2,451,416	2,451,416	2.5 %	2.5 %
i. Other	—	—	—	—
j. Total Collateral Assets (a+b+c+d+e+f+g+h+i)	\$ 2,451,416	\$ 2,451,416	2.5 %	2.5 %

* Column 1 divided by Asset Page, Line 26 (Column 1)

** Column 1 divided by Asset Page, Line 26 (Column 3)

	<u>1</u>	<u>2</u>
	<u>Amount</u>	<u>% of Liability to Total Liabilities *</u>
k. Recognized Obligation to Return Collateral Asset	\$ 2,451,416	4.2 %

* Column 1 divided by Liability Page, Line 24 (Column 3)

M. Working Capital Finance Investments

The Company did not have any working capital finance investments at December 31, 2022 and 2021.

N. Offsetting and Netting of Assets and Liabilities

The Company did not have any offsetting or netting of assets and liabilities at December 31, 2022 and 2021.

O. 5GI Securities

The Company has no 5GI Securities as of December 31, 2022 and 2021.

P. Short Sales

The Company did not have any short sales at December 31, 2022 and 2021.

Q. Prepayment Penalty and Acceleration Fees

The Company did not have any prepayment penalty or acceleration fees at December 31, 2022 and 2021.

R. Reporting Entity's Share of Cash Pool by Asset Type

The Company did not participate in a cash pool at December 31, 2022 or 2021.

ANNUAL STATEMENT FOR THE YEAR 2022 OF THE AMH Health, LLC.
NOTES TO FINANCIAL STATEMENTS

6. Joint Ventures, Partnerships and Limited Liability Companies

- A. The Company has no investments in joint ventures, partnerships or LLCs.
- B. Not applicable.

7. Investment Income

- A. All investment income due and accrued with amounts that are over 90 days past due is non-admitted.
- B. At December 31, 2022 and 2021 there was no nonadmitted accrued investment income.

8. Derivative Instruments

The Company has no derivative instruments.

ANNUAL STATEMENT FOR THE YEAR 2022 OF THE AMH Health, LLC.
NOTES TO FINANCIAL STATEMENTS

9. Income Taxes

A. The components of net deferred tax assets (liabilities):

(1) The components of net deferred tax asset (liabilities) are as follows:

	12/31/2022		
	(1) Ordinary	(2) Capital	(3) (Col 1+2) Total
(a) Gross Deferred Tax Assets	\$ 7,182,744	\$ 153,319	\$ 7,336,063
(b) Statutory Valuation Allowance Adjustments	7,182,437	153,319	7,335,756
(c) Adjusted Gross Deferred Tax Assets (1a - 1b)	307	—	307
(d) Deferred Tax Assets Nonadmitted	—	—	—
(e) Subtotal Net Admitted Deferred Tax Asset (1c - 1d)	307	—	307
(f) Deferred Tax Liabilities	307	—	307
(g) Net Admitted Deferred Tax Asset/(Net Deferred Tax Liability) (1e - 1f)	\$ —	\$ —	\$ —

	12/31/2021		
	(4) Ordinary	(5) Capital	(6) (Col 4+5) Total
(a) Gross Deferred Tax Assets	\$ 1,419,174	\$ 22,026	\$ 1,441,200
(b) Statutory Valuation Allowance Adjustments	1,186,388	22,026	1,208,414
(c) Adjusted Gross Deferred Tax Assets (1a - 1b)	232,786	—	232,786
(d) Deferred Tax Assets Nonadmitted	—	—	—
(e) Subtotal Net Admitted Deferred Tax Asset (1c - 1d)	232,786	—	232,786
(f) Deferred Tax Liabilities	—	—	—
(g) Net Admitted Deferred Tax Asset/(Net Deferred Tax Liability) (1e - 1f)	\$ 232,786	\$ —	\$ 232,786

	Change		
	(7) (Col 1-4) Ordinary	(8) (Col 2-5) Capital	(9) (Col 7+8) Total
(a) Gross Deferred Tax Assets	\$ 5,763,570	\$ 131,293	\$ 5,894,863
(b) Statutory Valuation Allowance Adjustments	5,996,049	131,293	6,127,342
(c) Adjusted Gross Deferred Tax Assets (1a - 1b)	(232,479)	—	(232,479)
(d) Deferred Tax Assets Nonadmitted	—	—	—
(e) Subtotal Net Admitted Deferred Tax Asset (1c - 1d)	(232,479)	—	(232,479)
(f) Deferred Tax Liabilities	307	—	307
(g) Net Admitted Deferred Tax Asset/(Net Deferred Tax Liability) (1e - 1f)	\$ (232,786)	\$ —	\$ (232,786)

ANNUAL STATEMENT FOR THE YEAR 2022 OF THE AMH Health, LLC.
NOTES TO FINANCIAL STATEMENTS

(2) The amount of admitted adjusted gross deferred tax assets under each component of SSAP No. 101, *Income Taxes* (“SSAP No. 101”) are as follows:

12/31/2022			
(1)	(2)	(3)	(3)
Ordinary	Capital	(Col 1+2) Total	
Admission Calculation Components SSAP No. 101			
(a) Federal Income Taxes Paid in Prior Years Recoverable Through Loss Carrybacks.	\$ —	\$ —	\$ —
(b) Adjusted Gross Deferred Tax Assets Expected To Be Realized (Excluding The Amount Of Deferred Tax Assets From 2(a) above) After Application of the Threshold Limitation. (The Lesser of 2(b)1 and 2(b)2 Below)	—	—	—
1. Adjusted Gross Deferred Tax Assets Expected To Be Realized Following the Balance Sheet Date.	—	—	—
2. Adjusted Gross Deferred Tax Assets Allowed per Limitation Threshold.	XXX	XXX	5,832,636
(c) Adjusted Gross Deferred Tax Assets (Excluding The Amount Of Deferred Tax Assets From 2(a) and 2(b) above) Offset by Gross Deferred Tax Liabilities.	307	—	307
(d) Deferred Tax Assets Admitted as the result of application of SSAP No. 101. Total (2(a) + 2(b) + 2(c))	<u>\$ 307</u>	<u>\$ —</u>	<u>\$ 307</u>

12/31/2021			
(4)	(5)	(6)	(6)
Ordinary	Capital	(Col 4+5) Total	
Admission Calculation Components SSAP No. 101			
(a) Federal Income Taxes Paid in Prior Years Recoverable Through Loss Carrybacks.	\$ 232,786	\$ —	\$ 232,786
(b) Adjusted Gross Deferred Tax Assets Expected To Be Realized (Excluding The Amount Of Deferred Tax Assets From 2(a) above) After Application of the Threshold Limitation. (The Lesser of 2(b)1 and 2(b)2 Below)	—	—	—
1. Adjusted Gross Deferred Tax Assets Expected To Be Realized Following the Balance Sheet Date.	—	—	—
2. Adjusted Gross Deferred Tax Assets Allowed per Limitation Threshold.	XXX	XXX	3,156,995
(c) Adjusted Gross Deferred Tax Assets (Excluding The Amount Of Deferred Tax Assets From 2(a) and 2(b) above) Offset by Gross Deferred Tax Liabilities.	—	—	—
(d) Deferred Tax Assets Admitted as the result of application of SSAP No. 101. Total (2(a) + 2(b) + 2(c))	<u>\$ 232,786</u>	<u>\$ —</u>	<u>\$ 232,786</u>

Change			
(7)	(8)	(9)	(9)
(Col 1-4) Ordinary	(Col 2-5) Capital	(Col 7+8) Total	
Admission Calculation Components SSAP No. 101			
(a) Federal Income Taxes Paid in Prior Years Recoverable Through Loss Carrybacks.	\$ (232,786)	\$ —	\$ (232,786)
(b) Adjusted Gross Deferred Tax Assets Expected To Be Realized (Excluding The Amount Of Deferred Tax Assets From 2(a) above) After Application of the Threshold Limitation. (The Lesser of 2(b)1 and 2(b)2 Below)	—	—	—
1. Adjusted Gross Deferred Tax Assets Expected To Be Realized Following the Balance Sheet Date.	—	—	—
2. Adjusted Gross Deferred Tax Assets Allowed per Limitation Threshold.	XXX	XXX	2,675,641
(c) Adjusted Gross Deferred Tax Assets (Excluding The Amount Of Deferred Tax Assets From 2(a) and 2(b) above) Offset by Gross Deferred Tax Liabilities.	307	—	307
(d) Deferred Tax Assets Admitted as the result of application of SSAP No. 101. Total (2(a) + 2(b) + 2(c))	<u>\$ (232,479)</u>	<u>\$ —</u>	<u>\$ (232,479)</u>

ANNUAL STATEMENT FOR THE YEAR 2022 OF THE AMH Health, LLC.
NOTES TO FINANCIAL STATEMENTS

(3)	2022	2021
(a) Ratio Percentage Used To Determine Recovery Period And Threshold Limitation Amount.	398.59%	418.36 %
(b) Amount Of Adjusted Capital And Surplus Used To Determine Recovery Period And Threshold Limitation In 2(b)2 Above.	\$ 38,884,238	\$31,569,948

(4)	12/31/2022		12/31/2021		Change	
	(1) Ordinary	(2) Capital	(3) Ordinary	(4) Capital	(5) (Col 1-3) Ordinary	(6) (Col 2-4) Capital
Impact of Tax-Planning Strategies						
(a) Determination of Adjusted Gross Deferred Tax Assets and Net Admitted Deferred Tax Assets, By Tax Character As A Percentage.						
1. Adjusted Gross DTAs Amount From Note 9A1(c)	\$ 307	\$ —	\$232,786	\$ —	\$(232,479)	\$ —
2. Percentage of Adjusted Gross DTAs By Tax Character Attributable To The Impact Of Tax Planning Strategies	0.00 %	0.00 %	0.00 %	0.00 %	0.00 %	0.00 %
3. Net Admitted Adjusted Gross DTAs Amount From Note 9A1(e)	\$ 307	\$ —	\$232,786	\$ —	\$(232,479)	\$ —
4. Percentage of Net Admitted Adjusted Gross DTAs By Tax Character Admitted Because Of The Impact Of Tax Planning Strategies	0.00 %	0.00 %	0.00 %	0.00 %	0.00 %	0.00 %

(b) Does the Company's tax-planning strategies include the use of reinsurance? Yes _____ No X

B. The Company has no unrecognized deferred tax liabilities at December 31, 2022 and 2021.

C. Current income taxes incurred consist of the following major components:

(1)	(1) 12/31/2022	(2) 12/31/2021	(3) (Col 1-2) Change
(1) Current Income Tax			
(a) Federal	\$ (187,562)	\$ (1,165,746)	\$ 978,184
(b) Foreign	—	—	—
(c) Subtotal	(187,562)	(1,165,746)	978,184
(d) Federal income tax expense on net capital gains	(45,226)	26,353	(71,579)
(e) Utilization of capital loss carry-forwards	—	1,153,402	(1,153,402)
(f) Other	—	—	—
(g) Federal and foreign income taxes incurred	<u>\$ (232,788)</u>	<u>\$ 14,009</u>	<u>\$ (246,797)</u>

ANNUAL STATEMENT FOR THE YEAR 2022 OF THE AMH Health, LLC.
NOTES TO FINANCIAL STATEMENTS

	(1) 12/31/2022	(2) 12/31/2021	(3) (Col 1-2) Change
(2) Deferred Tax Assets:			
(a) Ordinary			
(1) Discounting of unpaid losses	\$ 98,267	\$ 76,912	\$ 21,355
(2) Unearned premium reserve	178	464	(286)
(3) Policyholder reserves	168,000	126,000	42,000
(4) Investments	—	—	—
(5) Deferred acquisition costs	—	—	—
(6) Policyholder dividends accrual	—	—	—
(7) Fixed assets	—	—	—
(8) Compensation and benefits accrual	—	—	—
(9) Pension accrual	—	—	—
(10) Receivables - nonadmitted	164,955	46,753	118,202
(11) Net operating loss carry-forward	5,169,144	1,153,402	4,015,742
(12) Tax credit carry-forward	—	—	—
(13) Other	1,582,200	15,643	1,566,557
(99) Subtotal (sum of 2a1 through 2a13)	<u>7,182,744</u>	<u>1,419,174</u>	<u>5,763,570</u>
(b) Statutory valuation allowance adjustment	7,182,437	1,186,388	5,996,049
(c) Nonadmitted	—	—	—
(d) Admitted ordinary deferred tax assets (2a99 - 2b - 2c)	307	232,786	(232,479)
(e) Capital			
(1) Investments	153,319	22,026	131,293
(2) Net capital loss carry-forward	—	—	—
(3) Real estate	—	—	—
(4) Other	—	—	—
(99) Subtotal (2e1+2e2+2e3+2e4)	<u>153,319</u>	<u>22,026</u>	<u>131,293</u>
(f) Statutory valuation allowance adjustment	153,319	22,026	131,293
(g) Nonadmitted	—	—	—
(h) Admitted capital deferred tax assets (2e99 - 2f - 2g)	—	—	—
(i) Admitted deferred tax assets (2d + 2h)	<u>\$ 307</u>	<u>\$ 232,786</u>	<u>\$ (232,479)</u>
(3) Deferred Tax Liabilities:			
(a) Ordinary			
(1) Investments	\$ —	\$ —	\$ —
(2) Fixed assets	—	—	—
(3) Deferred and uncollected premium	—	—	—
(4) Policyholder reserves	—	—	—
(5) Other	307	—	307
(99) Subtotal (3a1+3a2+3a3+3a4+3a5)	<u>307</u>	<u>—</u>	<u>307</u>
(b) Capital			
(1) Investments	—	—	—
(2) Real estate	—	—	—
(3) Other	—	—	—
(99) Subtotal (3b1+3b2+3b3)	<u>—</u>	<u>—</u>	<u>—</u>
(c) Deferred tax liabilities (3a99 + 3b99)	<u>\$ 307</u>	<u>\$ —</u>	<u>\$ 307</u>
(4) Net deferred tax assets/liabilities (2i - 3c)	<u>\$ —</u>	<u>\$ 232,786</u>	<u>\$ (232,786)</u>

ANNUAL STATEMENT FOR THE YEAR 2022 OF THE AMH Health, LLC.
NOTES TO FINANCIAL STATEMENTS

- D.** The Company's income tax expense and change in deferred income taxes differs from the amount obtained by applying the federal statutory income tax rate of 21% for the year ended December 31 as follows:

	2022	2021
Tax expense computed using federal statutory rate	\$ (6,061,594)	\$ (1,219,898)
Change in nonadmitted assets	(64,209)	29,097
Tax exempt income and dividend received deduction net of proration	(1,540)	(280)
Prior year true-up and adjustments	—	20,450
Valuation allowance	6,127,343	1,208,414
Other, net	(2)	1,458
Total	\$ (2)	\$ 39,241
Federal income taxes incurred	\$ (232,788)	\$ 14,009
Change in net deferred income taxes	232,786	25,232
Total statutory income taxes	\$ (2)	\$ 39,241

E. Operating loss carryforwards:

- (1) At December 31, 2022, the Company had the following unused net operating loss or tax credit carryforwards available to offset future taxable income. The losses or credits will begin to expire as noted.

	Unused NOL Carryforwards	Will Begin to Expire		Unused Tax Credit Carryforwards	Will begin to Expire
\$	24,614,970	2041	\$	—	

- (2) The following are income taxes incurred in the current and prior year(s) that will be available for recoupment in the event of future net losses:

	Ordinary		Capital		Total
2022	\$ —	\$	—	\$	—
2021	—		—		—
2020		N/A	—		—

- (3) The Company has no protective tax deposits reported as admitted assets under Section 6603 of the Internal Revenue Service Code as of December 31, 2022 and 2021.

- F.** The Company's Federal Income Tax return is a separate filing. No owner has the required 80% to include them in a consolidated return. Thus, no tax sharing agreement is in place for federal income taxes. As of December 31, 2022, the statute of limitations of the 2022, 2021 and 2020 tax year remains open.

G. Not applicable.

H. Repatriation Transition Tax (RTT)

Not applicable.

I. Alternative Minimum Tax (AMT) Credit

On August 16, 2022, the U.S. government enacted the Inflation Reduction Act which includes a new corporate alternative minimum tax (the "Corporate AMT") of 15% on the adjusted financial statement of income ("AFSI") of corporations with average AFSI exceeding \$1.0 billion over a three-year period. The Corporate AMT is effective beginning after December 31, 2022. The Company has determined that it is not an applicable corporation, therefore it does not expect to be subject to the Corporate AMT in 2023.

ANNUAL STATEMENT FOR THE YEAR 2022 OF THE AMH Health, LLC.
NOTES TO FINANCIAL STATEMENTS

10. Information Concerning Parent, Subsidiaries, Affiliates and Other Related Parties

A. Nature of the Relationship

The Company is a wholly-owned subsidiary of Elevance Health, Inc. (“Elevance Health”), a publicly traded company. Elevance Health changed its name from Anthem, Inc. on June 27, 2022, following approval of its shareholders.

As of December 31, 2022, APHC owns 1 common membership unit and 18,000 preferred membership units and MainHealth owns one common membership unit.

B. Significant Transactions for Each Period

The following significant transactions took place between the Company and its affiliates:

The Company paid an additional contribution of \$1,500,000 to AMH Health Plans of Maine, Inc. on December 30, 2022.

On December 22, 2022, the Company’s parent company, Elevance Health, authorized a capital contribution to the Company in the amount of \$9,500,000 which was paid on December 29, 2022.

The Company received a capital contribution of \$9,500,000 from MaineHealth on December 29, 2022.

The Company received a capital contribution of \$5,000,000 from MaineHealth on September 23, 2022.

On September 21, 2022, the Company’s parent company, Elevance Health, authorized a capital contribution to the Company in the amount of \$5,000,000 which was paid on September 23, 2022.

The Company paid an additional contribution of \$2,000,000 to AMH Health Plans of Maine, Inc. on June 30, 2022.

The Company received a capital contribution of \$6,000,000 from MaineHealth on June 28, 2022.

On June 27, 2022, the Company’s parent company, Elevance Health, authorized a capital contribution to the Company in the amount of \$6,000,000 which was paid on June 29, 2022.

The Company received a capital contribution of \$6,500,000 from Anthem Partnership Holding Company, LLC ("APHC") on December 22, 2021. In return, APHC received 6,500 preferred membership units.

The Company received a capital contribution of \$6,500,000 from MaineHealth on December 22, 2021. In return, MaineHealth received 6,500 preferred membership units.

The Company paid an additional capital contribution of \$2,000,000 to AMH Health Plans of Maine, Inc. on September 29, 2021.

The Company received a capital contribution of \$4,000,000 from Anthem Partnership Holding Company, LLC ("APHC") on June 28, 2021. In return, APHC received 4,000 preferred membership units.

The Company received a capital contribution of \$4,000,000 from MaineHealth on June 28, 2021. In return, MaineHealth received 4,000 preferred membership units.

ANNUAL STATEMENT FOR THE YEAR 2022 OF THE AMH Health, LLC.
NOTES TO FINANCIAL STATEMENTS

The Company paid an additional capital contribution of \$600,000 to AMH Health Plans of Maine, Inc. on March 31, 2021.

For changes to the intercompany management and service arrangements see Note 10E. The amounts of transactions under such agreements are presented in Schedule Y, Part 2.

C. Transactions with Related Parties who are not Reported on Schedule Y

The Company has no transactions with related parties who are not reported on Schedule Y.

D. Amounts Due to or from Related Parties

At December 31, 2022 and 2021, the Company reported no amounts due from affiliates. At December 31, 2022 and 2021, the Company reported \$5,969,710 and \$53,094,668 due to affiliates, respectively. The receivable and payable balances represent intercompany transactions that will be settled in accordance with the settlement terms of the intercompany agreement.

E. Management and Service Contracts and Cost Sharing Arrangements

The Company entered into an administrative services agreement with APHC and MaineHealth. Pursuant to these agreements, various administrative, management and support services are provided to or provided by the Company. Costs include expenses such as salaries, employees benefits, information technology, pharmacy benefits administration, communications, advertising, consulting services, rent, utilities, billing, accounting, underwriting, and product development which support the Company's operations.

The Company amended the administrative services agreement with APHC and MaineHealth to confirm reporting and oversight responsibilities relating to utilization management for behavioral health services.

In addition, the Company has entered into a joinder affiliated services agreement as part of the Master Services Agreement between Anthem affiliates and Beacon Health Strategies LLC and Beacon Health Options, Inc., effective January 1, 2021.

F. Guarantees or Contingencies for Related Parties

The Company did not enter into guarantees or undertakings for the benefit of an affiliate which would result in a material contingent exposure of the Company's or any affiliated insurer's assets or liabilities.

G. Nature of Control Relationships that Could Affect Operations or Financial Position

The Company is owned 50% by APHC and 50% by MaineHealth.

H. Amount Deducted for Investment in Upstream Company

The Company does not own shares of upstream intermediate entities or Elevance Health.

I. Detail of Investments in Affiliates Greater than 10% of Admitted Assets

The Company does not have investments in affiliates greater than 10% of admitted assets.

ANNUAL STATEMENT FOR THE YEAR 2022 OF THE AMH Health, LLC.
NOTES TO FINANCIAL STATEMENTS

J. Write-down for Impairments of Investments in Subsidiaries, Controlled or Affiliated (“SCA”) Companies

Not applicable.

K. Investment in a Foreign Insurance Subsidiary

The Company does not have investments in foreign insurance subsidiaries.

L. Investment in Downstream Non-insurance Holding Companies

The Company does not have investments in downstream non-insurance holding companies.

M. All SCA Investments

The Company has no SCA Investments.

N. Investment in Insurance SCAs

The Company does not have investments in Insurance SCAs.

O. SCA or SSAP 48 Entity Loss Tracking

The Company does not have losses on investments in Insurance SCAs and/or joint ventures, partnerships or LLCs.

11. Debt

A. Capital Notes and Other Debt

The Company had no capital notes or other debt outstanding at December 31, 2022 and 2021.

B. FHLB (Federal Home Loan Bank) Agreements

The Company had no FHLB agreements outstanding at December 31, 2022 and 2021.

12. Retirement Plans, Deferred Compensation, Postemployment Benefits and Compensated Absences and Other Postretirement Benefit Plans

A. Defined Benefit Plan

Not applicable - See Note 12G.

B. Not applicable - See Note 12G.

C. Not applicable - See Note 12G.

D. Not applicable - See Note 12G.

E. Defined Contribution Plans

Not applicable - See Note 12G.

F. Multiemployer Plans

The Company does not participate in a multiemployer plan.

ANNUAL STATEMENT FOR THE YEAR 2022 OF THE AMH Health, LLC.
NOTES TO FINANCIAL STATEMENTS

G. Consolidated/Holding Company Plans

The Company participates in a nonqualified deferred compensation plan sponsored by Elevance Health which covers certain employees once the participant reaches the maximum contribution amount for the Elevance Health 401(k) Plan (the “401(k) Plan”). The deferred amounts are payable according to the terms and subject to the conditions of the deferred compensation plan. Elevance Health allocates a share of the total accumulated costs of this plan to the Company based on the number of allocated employees subject to the deferred compensation plan. The Company has no legal obligation for benefits under this plan.

The Company participates in the Elevance Health 401(k) Plan, sponsored by ATH Holding Company, LLC (“ATH Holding”) and covering substantially all employees. Voluntary employee contributions are matched by ATH Holding subject to certain limitations. ATH Holding allocates a share of the total accumulated costs of this plan to the Company based on the number of allocated employees. The Company has no legal obligation for benefits under this plan.

The Company participates in a stock incentive compensation plan, sponsored by Elevance Health, providing incentive awards to non-employee directors and employees, consisting of Elevance Health stock options, restricted stock, restricted stock units, stock appreciation rights, performance shares, and performance units. Elevance Health allocates a share of the total share-based compensation expense of this plan to the Company based on the number of allocated employees. The Company has no legal obligation for benefits under this plan.

During 2022 and 2021, the Company was allocated the following costs or (credits) for these retirement benefits:

	2022	2021
Deferred compensation plan	\$ 2,296	\$ 3,201
Defined contribution plan	236,532	242,237
Stock incentive compensation plan	118,872	121,380

H. Post Employment Benefits and Compensated Absences

Not applicable.

I. Impact of Medicare Modernization Act on Postretirement Benefits (INT 04-17)

Not applicable.

13. Capital and Surplus, Shareholders' Dividend Restrictions and Quasi-Reorganizations

A. Outstanding Shares

The Company has no common stock outstanding.

B. Preferred Stock

The Company has no preferred stock outstanding.

C. Dividend Restrictions

Under Maine law, the Company is limited in the amount of dividends that can be declared without regulatory approval. The Superintendent of Insurance must approve any dividend that, together with all dividends declared during the preceding twelve months, exceeds the greater of the net gain from operations for the twelve-month period ending

ANNUAL STATEMENT FOR THE YEAR 2022 OF THE AMH Health, LLC.
NOTES TO FINANCIAL STATEMENTS

December 31 of the preceding year or 10% of the Company's surplus to policyholders as of December 31 of the preceding year as long as unassigned surplus is positive. Also, any dividend paid from other than unassigned funds will need the approval of the Superintendent of Insurance.

D. Dividends Paid

See Footnote 10B.

E. Maximum Ordinary Dividend During 2023

Within the limitations of (C) above, the Company may not pay dividends during 2023 without prior approval.

F. Unassigned Surplus Restrictions

Unassigned surplus funds are not restricted at December 31, 2022.

G. Mutual Surplus Advances

Not applicable.

H. Company Stock Held for Special Purpose

There are no shares of stock held for special purposes at December 31, 2022.

I. Changes in Special Surplus Funds

There are no special surplus funds at December 31, 2022.

J. Changes in Unassigned Funds

The portion of unassigned funds represented by cumulative unrealized investment gains and losses was \$(4,750,622) at December 31, 2022.

K. Surplus Notes

The Company has not issued any surplus notes or debentures or similar obligations.

L. Restatement due to Prior Quasi-reorganizations

The Company had no restatements due to prior quasi-reorganizations.

M. Quasi-reorganizations over Prior 10 Years

The Company has not been involved in a quasi-reorganization during the past 10 years.

14. Liabilities, Contingencies and Assessments

A. Contingent Commitments

The Company had no contingent commitments at December 31, 2022 or 2021.

B. Assessments

(1) The Company is subject to guaranty fund and other assessments by the state in which it writes business. Guaranty fund assessments are accrued at the time of insolvencies.

ANNUAL STATEMENT FOR THE YEAR 2022 OF THE AMH Health, LLC.
NOTES TO FINANCIAL STATEMENTS

Other assessments are accrued either at the time of the assessment or at the time the losses are incurred.

(2) Not applicable.

(3) Not applicable.

C. Gain Contingencies

The Company has no gain contingencies at December 31, 2022 or 2021.

D. Claims-Related Extra Contractual Obligation and the Bad Faith Losses Stemming From Lawsuits

Not applicable.

E. Joint and Several Liabilities

Not applicable.

F. All Other Contingencies

Medicare Risk Adjustment Litigation

In March 2020, the U.S. Department of Justice (“DOJ”) filed a civil lawsuit against Elevance Health, Inc. (f/k/a Anthem, Inc.) in the U.S. District Court for the Southern District of New York (the “New York District Court”) in a case captioned *United States v. Anthem, Inc.* The DOJ’s suit alleges, among other things, that Elevance Health falsely certified the accuracy of the diagnosis data they submitted to the Centers for Medicare and Medicaid Services (“CMS”) for risk-adjustment purposes under Medicare Part C and knowingly failed to delete inaccurate diagnosis codes. The DOJ further alleges that, as a result of these purported acts, Elevance Health caused CMS to calculate the risk-adjustment payments based on inaccurate diagnosis information, which enabled Elevance Health to obtain unspecified amounts of payments in Medicare funds in violation of the False Claims Act. The DOJ filed an amended complaint in July 2020, alleging the same causes of action but revising some of its factual allegations. In September 2020, Elevance Health filed a motion to transfer the lawsuit to the Southern District of Ohio, a motion to dismiss part of the lawsuit, and a motion to strike certain allegations in the amended complaint. In an opinion and order issued October 3, 2022, the New York District Court denied Elevance Health’s motions, and the case will now proceed in that court. In November 2022, Elevance Health filed an answer. They intend to continue to vigorously defend this suit, which they believe is without merit; however, the ultimate outcome cannot be presently determined.

From time to time, the Company and certain of its subsidiaries are parties to various legal proceedings, many of which involve claims for coverage encountered in the ordinary course of business. The Company, like Health Maintenance Organizations (“HMOs”) and health insurers generally, exclude certain healthcare and other services from coverage under their HMO, Preferred Provider Organizations and other plans. The Company is, in the ordinary course of business, subject to the claims of their enrollees arising out of decisions to restrict or deny reimbursement for uncovered services. The loss of even one such claim, if it results in a significant punitive damage award, could have a material adverse effect on the Company. In addition, the risk of potential liability under punitive damage theories may increase significantly the difficulty of obtaining reasonable reimbursement of coverage claims.

In addition to the lawsuits described above, the Company is also involved in other pending and threatened litigation of the character incidental to their business and is from time to time involved as a party in various governmental investigations, audits, reviews

ANNUAL STATEMENT FOR THE YEAR 2022 OF THE AMH Health, LLC.
NOTES TO FINANCIAL STATEMENTS

and administrative proceedings. These investigations, audits, reviews and administrative proceedings include routine and special inquiries by state insurance departments, state attorneys general, the U.S. Attorney General and subcommittees of the U.S. Congress. Such investigations, audits, reviews and administrative proceedings could result in the imposition of civil or criminal fines, penalties, other sanctions and additional rules, regulations or other restrictions on the Company's business operations. Any liability that may result from any one of these actions, or in the aggregate, could have a material adverse effect on the Company's consolidated financial position or results of operations.

The Company has no other known material contingencies.

Provisions for uncollectible amounts

At December 31, 2022 and 2021, the Company reported admitted assets of \$13,028,415 and \$7,968,768, respectively, in premium receivables and receivables due from uninsured plans. Based upon the Company's experience, any uncollectible receivables are not expected to exceed \$130,903 that was nonadmitted at December 31, 2022; therefore, no additional provision for uncollectible amounts has been recorded. The potential for any additional loss is not believed to be material to the Company's financial condition.

15. Leases

A. Lessee Operating Lease

The Company has no lessee leasing arrangements.

B. Lessor Leases

(1) The Company has not entered into any operating leases.

(2) The Company has not entered into any leveraged leases.

16. Information About Financial Instruments With Off-Balance Sheet Risk and Financial Instruments With Concentrations of Credit Risk

The Company has no significant financial instruments with off-balance sheet risk.

Financial instruments that potentially subject the Company to concentrations of credit risk consist primarily of investment securities. All investment securities are managed by professional investment managers within policies authorized by the board of directors. Such policies limit the amounts that may be invested in any one issuer and prescribe certain investee company criteria. As of December 31, 2022, there were no significant concentrations.

17. Sale, Transfer and Servicing of Financial Assets and Extinguishments of Liabilities

A. Transfers of Receivables Reported as Sales

Not applicable at December 31, 2022 and 2021.

B. Transfer and Servicing of Financial Assets

(1) The Company participates in a securities lending program whereby marketable securities in its investment portfolio are transferred to independent brokers or dealers. At December 31, 2022 the fair value of securities loaned was \$2,252,583 and the carrying value of securities loaned was \$2,253,445.

ANNUAL STATEMENT FOR THE YEAR 2022 OF THE AMH Health, LLC.
NOTES TO FINANCIAL STATEMENTS

C. Wash Sales

(1) In the course of the Company's asset management, securities may be sold and reacquired within 30 days of the sale date to enhance the yield on the investments.

(2) At December 31, 2022 and 2021, there were no wash sales involving securities with an NAIC designation of 3 or below or unrated.

18. Gain or Loss to the Reporting Entity from Uninsured Plans and the Uninsured Portion of Partially Insured Plans

A. Administrative Services Only ("ASO") Plans

Not applicable at December 31, 2022.

B. Administrative Services Contract ("ASC") Plans

Not applicable at December 31, 2022.

C. Medicare or Other Similarly Structured Cost-Based Reimbursement Contract

(2)	Receivable from	Related to	2022	2021
	Federal government	ACA and Medicare cost sharing and reinsurance programs	\$ 4,628,368	\$ 3,446,916
	State government	ACA cost sharing and reinsurance programs, including Section 1332	\$ —	\$ —
	Uninsured plans	Uninsured business, not including pharmaceutical rebate receivables	\$ —	\$ —

19. Direct Premium Written/Produced by Managing General Agents/Third Party Administrators

No premiums were written by managing general agents or third party administrators during the years ended December 31, 2022 and 2021.

20. Fair Value Measurements

A.

There are no assets or liabilities measured at fair value as of December 31, 2022 and 2021.

(2) Fair Value Measurements in (Level 3) of the Fair Value Hierarchy

There are no investments in Level 3 as of December 31, 2022 and 2021.

(3) The Company's policy is to recognize transfers between Levels, if any, as of the beginning of the reporting period.

(4) Fair values of bonds are based on quoted market prices, where available. These fair values are obtained primarily from third party pricing services, which generally use Level 1 or Level 2 inputs, for the determination of fair value to facilitate fair value measurements and disclosures. Level 2 securities primarily include United States government securities, corporate securities, securities from states, municipalities and political subdivisions, mortgage-backed securities and certain other asset-backed securities. For securities not actively traded, the pricing services may use quoted market prices of comparable instruments or discounted cash flow analyses, incorporating inputs that are currently observable in the markets for similar securities. Inputs that are often used in the valuation methodologies include, but are not limited to, broker quotes,

ANNUAL STATEMENT FOR THE YEAR 2022 OF THE AMH Health, LLC.
NOTES TO FINANCIAL STATEMENTS

benchmark yields, credit spreads, default rates and prepayment speeds. The Company has controls in place to review the pricing services' qualifications and procedures used to determine fair values. In addition, the Company periodically reviews the pricing services' pricing methodologies, data sources and pricing inputs to ensure the fair values obtained are reasonable.

Certain bonds, primarily corporate debt securities, are designated Level 3. For these securities, the valuation methodologies may incorporate broker quotes or discounted cash flow analyses using assumptions for inputs such as expected cash flows, benchmark yields, credit spreads, default rates and prepayment speeds that are not observable in the markets.

There have been no significant changes in the valuation techniques during the current period.

There are no assets or liabilities measured at fair value.

B. Fair Value Measurements Under Other Accounting Pronouncements

Not applicable at December 31, 2022 and 2021.

C. Financial Instruments

Type of Financial Instrument	Aggregate Fair Value	Admitted Assets	(Level 1)	(Level 2)	(Level 3)	Net Asset Value (NAV)	Practicable (Carrying Value)
Bonds	\$ 48,840,952	\$ 51,187,000	\$ 24,112,372	\$ 24,728,580	\$ —	\$ —	\$ —
Securities lending collateral asset	2,451,416	2,451,416	—	2,451,416	—	—	—

D. Not Practicable to Estimate Fair Value

There are no financial instruments that were not practicable to estimate fair value.

E. Investments Measured at Net Asset Value

The Company has no investments measured at net asset value.

21. Other Items

A. Unusual or Infrequent Items

Not applicable at December 31, 2022 and 2021.

B. Troubled Debt Restructuring: Debtors

Not applicable at December 31, 2022 and 2021.

C. Other Disclosures

Assets in the amount of \$112,993 and \$116,263 at December 31, 2022 and 2021, respectively, were on deposit with government authorities or trustees as required by law.

The Bureau requires that the Company maintain a risk-based capital at no less than the greater of 375% of authorized control level risk-based capital or the minimum surplus requirements of 24-A M.R.S. Section 410.

ANNUAL STATEMENT FOR THE YEAR 2022 OF THE AMH Health, LLC.
NOTES TO FINANCIAL STATEMENTS

D. Business Interruption Insurance Recoveries

The Company has reported no recoveries for business interruption for the years ended December 31, 2022 and 2021.

E. State Transferable and Non-Transferable Tax Credits

The Company did not have state transferable or non-transferable tax credits at December 31, 2022 and 2021.

F. Subprime Mortgage-Related Risk Exposure

- (1) The Company's investment strategy of providing safety and preservation of capital, sufficient liquidity to meet cash flow requirements and the attainment of a competitive after-tax investment return is supported by a well diversified portfolio consisting of many different types of investments. The portion of the Company's investment portfolio with subprime mortgage-related risk exposure is relatively small in comparison to the overall investment portfolio, and consists mainly of investment grade securities with no exposure to collateralized debt obligations. All mortgage related investments are monitored closely as part of the quarterly investment review performed by the Elevance Health Investment Impairment Review Committee.
- (2) The Company did not carry investments in subprime mortgage loans in its portfolio at December 31, 2022 or 2021.
- (3) The Company did not have subprime mortgage-related risk exposure at December 31, 2022 or 2021.
- (4) The Company did not underwrite Mortgage Guaranty or Financial Guaranty insurance coverage at December 31, 2022 or 2021.

G. Retained Assets

The Company does not have retained assets at December 31, 2022 and 2021.

H. Insurance-Linked Securities Contracts

Not applicable.

I. The Amount That Could Be Realized on Life Insurance Where the Reporting Entity is Owner and Beneficiary or Has Otherwise Obtained Rights to Control the Policy

Not applicable.

22. Events Subsequent

Subsequent events have been considered through February 27, 2023 for the statutory statement issued on February 28, 2023. There were no events occurring subsequent to December 31, 2022 requiring recognition or disclosure.

ANNUAL STATEMENT FOR THE YEAR 2022 OF THE AMH Health, LLC.
NOTES TO FINANCIAL STATEMENTS

23. Reinsurance

A. Ceded Reinsurance Report

Section 1 - General Interrogatories

- (1) Are any of the reinsurers that are listed in Schedule S as non-affiliated owned in excess of 10% or controlled, either directly or indirectly, by the Company or by any representative, officer, trustee, or director of the Company?

Yes () No (X)

If yes, give full details.

- (2) Have any policies issued by the Company been reinsured with a company chartered in a country other than the United States (excluding U.S. Branches of such companies) that is owned in excess of 10% or controlled, directly or indirectly, by an insured, a beneficiary, a creditor or an insured or any other person not primarily engaged in the insurance business?

Yes () No (X)

If yes, give full details.

Section 2 - Ceded Reinsurance Report - Part A

- (1) Does the Company have any reinsurance agreements in effect under which the reinsurer may unilaterally cancel any reinsurance for reasons other than for nonpayment of premium or other similar credits?

Yes () No (X)

If yes, give full details.

- (2) Does the reporting entity have any reinsurance agreements in effect such that the amount of losses paid or accrued through the statement date may result in a payment to the reinsurer of amounts that, in aggregate and allowing for offset of mutual credits from other reinsurance agreements with the same reinsurer, exceed the total direct premium collected under the reinsured policies?

Yes () No (X)

If yes, give full details.

Section 3 - Ceded Reinsurance Report - Part B

- (1) What is the estimated amount of the aggregate reduction in surplus, (for agreements other than those under which the reinsurer may unilaterally cancel for reasons other than for nonpayment of premium or other similar credits that are reflected in Section 2 above) of termination of ALL reinsurance agreements, by either party, as of the date of this statement? Where necessary, the Company may consider the current or anticipated experience of the business reinsured in making this estimate.

\$0

- (2) Have any new agreements been executed or existing agreements amended, since January 1 of the year of this statement, to include policies or contracts that were in

ANNUAL STATEMENT FOR THE YEAR 2022 OF THE AMH Health, LLC.
NOTES TO FINANCIAL STATEMENTS

force or which had existing reserves established by the Company as of the effective date of the agreement?

Yes () No (X)

If yes, give full details.

B. Uncollectible Reinsurance

The Company has no uncollectible reinsurance at December 31, 2022 and 2021.

C. Commutation of Ceded Reinsurance

The Company has not commuted ceded reinsurance during 2022 and 2021.

D. Certified Reinsurer Rating Downgraded or Status Subject Revocation

The Company has no downgraded certified reinsurer ratings or status subject to revocations during 2022 and 2021.

E. Reinsurance Credit

(1) Not applicable.

(2) Not applicable.

(3) Not applicable.

(4) Not applicable.

(5) Not applicable.

(6) Not applicable.

24. Retrospectively Rated Contracts & Contracts Subject to Redetermination

A. The Company sells accident and health policies for which the premiums vary based on loss experience. The Company estimates retrospective premium adjustments through the review of each retrospectively rated account, comparing the claim development with that anticipated in the policy contracts.

B. The Company records accrued retrospective premium as an adjustment to earned premium.

C. All of the Company's net premiums written are subject to a retrospective rating feature.

D. Not applicable.

E. Risk-Sharing Provisions of the ACA

(1) Did the reporting entity write accident and health insurance premium that is subject to the Affordable Care Act risk-sharing provisions (YES/NO)? No

(2) Impact of Risk-Sharing Provisions of the Affordable Care Act on Admitted Assets, Liabilities and Revenue for the Current Year

Not applicable.

ANNUAL STATEMENT FOR THE YEAR 2022 OF THE AMH Health, LLC.
NOTES TO FINANCIAL STATEMENTS

- (3) Roll-forward of prior year ACA risk-sharing provisions for the following asset (gross of any nonadmission) and liability balances, along with the reasons for adjustments to prior year balance.

Not applicable.

- (4) Roll-forward of Risk Corridors Asset and Liability Balances by Program Benefit Year.

Not applicable.

- (5) ACA Risk Corridors Receivable as of Reporting Date.

Not applicable.

25. Change in Incurred Claims and Claim Adjustment Expenses

- A.** The estimated cost of claims and claim adjustment expense attributable to insured events of prior years increased by \$2,173,204 during 2022. This is approximately 8.1% of unpaid claims and claim adjustment expenses of \$26,758,523 as of December 31, 2021. The deficiency reflects the increase in estimated claims and claims adjustment expenses as a result of claims payment during the year, and as additional information is received regarding claims incurred prior to 2022. Recent claim development trends are also taken into account in evaluating the overall adequacy of unpaid claims and unpaid claim adjustment expense.
- B.** There were no significant changes in methodologies and assumptions used in calculating the liability for unpaid losses and loss adjustment expenses.

26. Intercompany Pooling Arrangements

Not applicable at December 31, 2022 and 2021.

27. Structured Settlements

Not applicable at December 31, 2022 and 2021.

ANNUAL STATEMENT FOR THE YEAR 2022 OF THE AMH Health, LLC.
NOTES TO FINANCIAL STATEMENTS

28. Health Care Receivables

A. Pharmaceutical Rebate Receivables

Quarter	Estimated Pharmacy Rebates as Reported on Financial Statements	Pharmacy Rebates as Billed or Otherwise Confirmed	Actual Rebates Received Within 90 Days of Billing	Actual Rebates Received Within 91 to 180 Days of Billing	Actual Rebates Received More Than 180 Days After Billing
12/31/2022	\$ 3,141,947	\$ 8,324,603	\$ 5,182,656	\$ —	\$ —
9/30/2022	2,684,974	7,870,807	7,755,205	—	—
6/30/2022	2,959,999	8,029,746	7,860,887	168,859	—
3/31/2022	2,581,474	6,979,465	6,856,258	123,208	—
12/31/2021	\$ 2,125,937	\$ 5,740,967	\$ 5,663,573	\$ 77,394	\$ —
9/30/2021	1,859,300	5,320,603	5,227,697	92,906	—
6/30/2021	1,989,514	3,754,397	3,682,823	71,574	—
3/31/2021	1,955,064	4,921,486	4,878,634	42,851	—
12/31/2020	1,209,016	3,264,527	3,260,277	4,250	—
9/30/2020	631,740	2,105,778	2,082,716	23,062	—
6/30/2020	744,053	2,389,752	2,380,117	9,635	—
3/31/2020	449,890	1,002,420	1,002,420	—	—

B. Risk Sharing Receivables

Not applicable at December 31, 2022 and 2021.

29. Participating Policies

Not applicable at December 31, 2022 and 2021.

30. Premium Deficiency Reserves

1. Liability carried for premium deficiency reserves	\$ 7,465,532
2. Date of the most recent evaluation of this liability	<u>December 31, 2022</u>
3. Was anticipated investment income utilized in the calculation?	Yes <u> </u> No <u> X </u>

The Company had no liabilities related to premium deficiency reserves as of December 31, 2021.

31. Anticipated Salvage and Subrogation

The Company took into account estimated anticipated subrogation and other recoveries in its determination of the liability for unpaid claims and reduced the liability by \$254,000 and \$111,000 at December 31, 2022 and 2021, respectively.

GENERAL INTERROGATORIES

PART 1 - COMMON INTERROGATORIES GENERAL

- 1.1 Is the reporting entity a member of an Insurance Holding Company System consisting of two or more affiliated persons, one or more of which is an insurer? Yes [X] No []
If yes, complete Schedule Y, Parts 1, 1A, 2 and 3.
- 1.2 If yes, did the reporting entity register and file with its domiciliary State Insurance Commissioner, Director or Superintendent or with such regulatory official of the state of domicile of the principal insurer in the Holding Company System, a registration statement providing disclosure substantially similar to the standards adopted by the National Association of Insurance Commissioners (NAIC) in its Model Insurance Holding Company System Regulatory Act and model regulations pertaining thereto, or is the reporting entity subject to standards and disclosure requirements substantially similar to those required by such Act and regulations? Yes [X] No [] N/A []
- 1.3 State Regulating? Maine
- 1.4 Is the reporting entity publicly traded or a member of a publicly traded group? Yes [X] No []
- 1.5 If the response to 1.4 is yes, provide the CIK (Central Index Key) code issued by the SEC for the entity/group. 0001156039
- 2.1 Has any change been made during the year of this statement in the charter, by-laws, articles of incorporation, or deed of settlement of the reporting entity? Yes [] No [X]
- 2.2 If yes, date of change:
- 3.1 State as of what date the latest financial examination of the reporting entity was made or is being made. 12/31/2022
- 3.2 State the as of date that the latest financial examination report became available from either the state of domicile or the reporting entity. This date should be the date of the examined balance sheet and not the date the report was completed or released.
- 3.3 State as of what date the latest financial examination report became available to other states or the public from either the state of domicile or the reporting entity. This is the release date or completion date of the examination report and not the date of the examination (balance sheet date).
- 3.4 By what department or departments?
State of Maine Bureau of Insurance
- 3.5 Have all financial statement adjustments within the latest financial examination report been accounted for in a subsequent financial statement filed with Departments? Yes [] No [] N/A [X]
- 3.6 Have all of the recommendations within the latest financial examination report been complied with? Yes [] No [] N/A [X]
- 4.1 During the period covered by this statement, did any agent, broker, sales representative, non-affiliated sales/service organization or any combination thereof under common control (other than salaried employees of the reporting entity), receive credit or commissions for or control a substantial part (more than 20 percent of any major line of business measured on direct premiums) of:
4.11 sales of new business? Yes [] No [X]
4.12 renewals? Yes [] No [X]
- 4.2 During the period covered by this statement, did any sales/service organization owned in whole or in part by the reporting entity or an affiliate, receive credit or commissions for or control a substantial part (more than 20 percent of any major line of business measured on direct premiums) of:
4.21 sales of new business? Yes [] No [X]
4.22 renewals? Yes [] No [X]
- 5.1 Has the reporting entity been a party to a merger or consolidation during the period covered by this statement? Yes [] No [X]
If yes, complete and file the merger history data file with the NAIC.
- 5.2 If yes, provide the name of the entity, NAIC Company Code, and state of domicile (use two letter state abbreviation) for any entity that has ceased to exist as a result of the merger or consolidation.

1 Name of Entity	2 NAIC Company Code	3 State of Domicile

- 6.1 Has the reporting entity had any Certificates of Authority, licenses or registrations (including corporate registration, if applicable) suspended or revoked by any governmental entity during the reporting period? Yes [] No [X]
- 6.2 If yes, give full information:
- 7.1 Does any foreign (non-United States) person or entity directly or indirectly control 10% or more of the reporting entity? Yes [] No [X]
- 7.2 If yes,
7.21 State the percentage of foreign control; %
7.22 State the nationality(s) of the foreign person(s) or entity(s); or if the entity is a mutual or reciprocal, the nationality of its manager or attorney-in-fact and identify the type of entity(s) (e.g., individual, corporation, government, manager or attorney-in-fact).

1 Nationality	2 Type of Entity

ANNUAL STATEMENT FOR THE YEAR 2022 OF THE AMH Health, LLC

GENERAL INTERROGATORIES

- 8.1 Is the company a subsidiary of a depository institution holding company (DIHC) or a DIHC itself, regulated by the Federal Reserve Board? Yes [] No [X]
- 8.2 If the response to 8.1 is yes, please identify the name of the DIHC.
.....
- 8.3 Is the company affiliated with one or more banks, thrifts or securities firms? Yes [] No [X]
- 8.4 If response to 8.3 is yes, please provide below the names and location (city and state of the main office) of any affiliates regulated by a federal regulatory services agency [i.e. the Federal Reserve Board (FRB), the Office of the Comptroller of the Currency (OCC), the Federal Deposit Insurance Corporation (FDIC) and the Securities Exchange Commission (SEC)] and identify the affiliate's primary federal regulator.

1	2	3	4	5	6
Affiliate Name	Location (City, State)	FRB	OCC	FDIC	SEC

- 8.5 Is the reporting entity a depository institution holding company with significant insurance operations as defined by the Board of Governors of Federal Reserve System or a subsidiary of the depository institution holding company? Yes [] No [X]
- 8.6 If response to 8.5 is no, is the reporting entity a company or subsidiary of a company that has otherwise been made subject to the Federal Reserve Board's capital rule? Yes [] No [X] N/A []
9. What is the name and address of the independent certified public accountant or accounting firm retained to conduct the annual audit?
Ernst & Young LLP, 111 Monument Circle, Suite 4000, Indianapolis, IN 46204
- 10.1 Has the insurer been granted any exemptions to the prohibited non-audit services provided by the certified independent public accountant requirements as allowed in Section 7H of the Annual Financial Reporting Model Regulation (Model Audit Rule), or substantially similar state law or regulation? Yes [] No [X]
- 10.2 If the response to 10.1 is yes, provide information related to this exemption:
.....
- 10.3 Has the insurer been granted any exemptions related to the other requirements of the Annual Financial Reporting Model Regulation as allowed for in Section 18A of the Model Regulation, or substantially similar state law or regulation? Yes [] No [X]
- 10.4 If the response to 10.3 is yes, provide information related to this exemption:
.....
- 10.5 Has the reporting entity established an Audit Committee in compliance with the domiciliary state insurance laws? Yes [X] No [] N/A []
- 10.6 If the response to 10.5 is no or n/a, please explain
.....
11. What is the name, address and affiliation (officer/employee of the reporting entity or actuary/consultant associated with an actuarial consulting firm) of the individual providing the statement of actuarial opinion/certification?
Claudia Ellis, ASA, MAAA, Director & Actuary, II (employee) 2455 Mossy Branch Rd, Snellville, GA 30078
- 12.1 Does the reporting entity own any securities of a real estate holding company or otherwise hold real estate indirectly? Yes [] No [X]
- 12.11 Name of real estate holding company ...
- 12.12 Number of parcels involved
- 12.13 Total book/adjusted carrying value \$
- 12.2 If, yes provide explanation:
.....
- 13. FOR UNITED STATES BRANCHES OF ALIEN REPORTING ENTITIES ONLY:**
- 13.1 What changes have been made during the year in the United States manager or the United States trustees of the reporting entity?
.....
- 13.2 Does this statement contain all business transacted for the reporting entity through its United States Branch on risks wherever located? Yes [] No []
- 13.3 Have there been any changes made to any of the trust indentures during the year? Yes [] No []
- 13.4 If answer to (13.3) is yes, has the domiciliary or entry state approved the changes? Yes [] No [] N/A []
- 14.1 Are the senior officers (principal executive officer, principal financial officer, principal accounting officer or controller, or persons performing similar functions) of the reporting entity subject to a code of ethics, which includes the following standards? Yes [X] No []
- a. Honest and ethical conduct, including the ethical handling of actual or apparent conflicts of interest between personal and professional relationships;
- b. Full, fair, accurate, timely and understandable disclosure in the periodic reports required to be filed by the reporting entity;
- c. Compliance with applicable governmental laws, rules and regulations;
- d. The prompt internal reporting of violations to an appropriate person or persons identified in the code; and
- e. Accountability for adherence to the code.
- 14.11 If the response to 14.1 is No, please explain:
.....
- 14.2 Has the code of ethics for senior managers been amended? Yes [X] No []
- 14.21 If the response to 14.2 is yes, provide information related to amendment(s).
Code amended to reflect name change from Anthem to Elevance Health.
- 14.3 Have any provisions of the code of ethics been waived for any of the specified officers? Yes [] No [X]
- 14.31 If the response to 14.3 is yes, provide the nature of any waiver(s).
.....

ANNUAL STATEMENT FOR THE YEAR 2022 OF THE AMH Health, LLC
GENERAL INTERROGATORIES

- 15.1 Is the reporting entity the beneficiary of a Letter of Credit that is unrelated to reinsurance where the issuing or confirming bank is not on the SVO Bank List? Yes [] No [X]
- 15.2 If the response to 15.1 is yes, indicate the American Bankers Association (ABA) Routing Number and the name of the issuing or confirming bank of the Letter of Credit and describe the circumstances in which the Letter of Credit is triggered.

1 American Bankers Association (ABA) Routing Number	2 Issuing or Confirming Bank Name	3 Circumstances That Can Trigger the Letter of Credit	4 Amount
.....

BOARD OF DIRECTORS

16. Is the purchase or sale of all investments of the reporting entity passed upon either by the board of directors or a subordinate committee thereof? Yes [X] No []
17. Does the reporting entity keep a complete permanent record of the proceedings of its board of directors and all subordinate committees thereof? Yes [X] No []
18. Has the reporting entity an established procedure for disclosure to its board of directors or trustees of any material interest or affiliation on the part of any of its officers, directors, trustees or responsible employees that is in conflict or is likely to conflict with the official duties of such person? Yes [X] No []

FINANCIAL

19. Has this statement been prepared using a basis of accounting other than Statutory Accounting Principles (e.g., Generally Accepted Accounting Principles)? Yes [] No [X]
- 20.1 Total amount loaned during the year (inclusive of Separate Accounts, exclusive of policy loans):
- | | |
|---|----------|
| 20.11 To directors or other officers..... | \$ |
| 20.12 To stockholders not officers..... | \$ |
| 20.13 Trustees, supreme or grand (Fraternal Only) | \$ |
- 20.2 Total amount of loans outstanding at the end of year (inclusive of Separate Accounts, exclusive of policy loans):
- | | |
|---|----------|
| 20.21 To directors or other officers..... | \$ |
| 20.22 To stockholders not officers..... | \$ |
| 20.23 Trustees, supreme or grand (Fraternal Only) | \$ |
- 21.1 Were any assets reported in this statement subject to a contractual obligation to transfer to another party without the liability for such obligation being reported in the statement? Yes [] No [X]
- 21.2 If yes, state the amount thereof at December 31 of the current year:
- | | |
|---------------------------------|----------|
| 21.21 Rented from others..... | \$ |
| 21.22 Borrowed from others..... | \$ |
| 21.23 Leased from others | \$ |
| 21.24 Other | \$ |
- 22.1 Does this statement include payments for assessments as described in the Annual Statement Instructions other than guaranty fund or guaranty association assessments? Yes [] No [X]
- 22.2 If answer is yes:
- | |
|---|
| 22.21 Amount paid as losses or risk adjustment \$ |
| 22.22 Amount paid as expenses |
| 22.23 Other amounts paid |
- 23.1 Does the reporting entity report any amounts due from parent, subsidiaries or affiliates on Page 2 of this statement? Yes [] No [X]
- 23.2 If yes, indicate any amounts receivable from parent included in the Page 2 amount: \$
- 24.1 Does the insurer utilize third parties to pay agent commissions in which the amounts advanced by the third parties are not settled in full within 90 days? Yes [] No [X]
- 24.2 If the response to 24.1 is yes, identify the third-party that pays the agents and whether they are a related party.

Name of Third-Party	Is the Third-Party Agent a Related Party (Yes/No)
.....

INVESTMENT

- 25.01 Were all the stocks, bonds and other securities owned December 31 of current year, over which the reporting entity has exclusive control, in the actual possession of the reporting entity on said date? (other than securities lending programs addressed in 25.03)..... Yes [X] No []

ANNUAL STATEMENT FOR THE YEAR 2022 OF THE AMH Health, LLC
GENERAL INTERROGATORIES

- 25.02 If no, give full and complete information relating thereto

- 25.03 For securities lending programs, provide a description of the program including value for collateral and amount of loaned securities, and whether collateral is carried on or off-balance sheet. (an alternative is to reference Note 17 where this information is also provided) See Notes 5E and 17.
- 25.04 For the reporting entity's securities lending program, report amount of collateral for conforming programs as outlined in the Risk-Based Capital Instructions. \$ 2,451,416
- 25.05 For the reporting entity's securities lending program, report amount of collateral for other programs. \$
- 25.06 Does your securities lending program require 102% (domestic securities) and 105% (foreign securities) from the counterparty at the outset of the contract? Yes No N/A
- 25.07 Does the reporting entity non-admit when the collateral received from the counterparty falls below 100%? Yes No N/A
- 25.08 Does the reporting entity or the reporting entity's securities lending agent utilize the Master Securities lending Agreement (MSLA) to conduct securities lending? Yes No N/A
- 25.09 For the reporting entity's securities lending program state the amount of the following as of December 31 of the current year:
- 25.091 Total fair value of reinvested collateral assets reported on Schedule DL, Parts 1 and 2. \$ 2,451,416
- 25.092 Total book adjusted/carrying value of reinvested collateral assets reported on Schedule DL, Parts 1 and 2 \$ 2,451,416
- 25.093 Total payable for securities lending reported on the liability page. \$ 2,451,416

- 26.1 Were any of the stocks, bonds or other assets of the reporting entity owned at December 31 of the current year not exclusively under the control of the reporting entity or has the reporting entity sold or transferred any assets subject to a put option contract that is currently in force? (Exclude securities subject to Interrogatory 21.1 and 25.03). Yes No
- 26.2 If yes, state the amount thereof at December 31 of the current year:
- 26.21 Subject to repurchase agreements \$
- 26.22 Subject to reverse repurchase agreements \$
- 26.23 Subject to dollar repurchase agreements \$
- 26.24 Subject to reverse dollar repurchase agreements \$
- 26.25 Placed under option agreements \$
- 26.26 Letter stock or securities restricted as to sale - excluding FHLB Capital Stock \$
- 26.27 FHLB Capital Stock \$
- 26.28 On deposit with states \$ 112,993
- 26.29 On deposit with other regulatory bodies \$
- 26.30 Pledged as collateral - excluding collateral pledged to an FHLB \$
- 26.31 Pledged as collateral to FHLB - including assets backing funding agreements \$
- 26.32 Other \$

26.3 For category (26.26) provide the following:

1 Nature of Restriction	2 Description	3 Amount

- 27.1 Does the reporting entity have any hedging transactions reported on Schedule DB? Yes No
- 27.2 If yes, has a comprehensive description of the hedging program been made available to the domiciliary state? Yes No N/A
 If no, attach a description with this statement.

LINES 27.3 through 27.5: FOR LIFE/FRATERNAL REPORTING ENTITIES ONLY:

- 27.3 Does the reporting entity utilize derivatives to hedge variable annuity guarantees subject to fluctuations as a result of interest rate sensitivity? . Yes No
- 27.4 If the response to 27.3 is YES, does the reporting entity utilize:
- 27.41 Special accounting provision of SSAP No. 108 Yes No
- 27.42 Permitted accounting practice Yes No
- 27.43 Other accounting guidance Yes No
- 27.5 By responding YES to 27.41 regarding utilizing the special accounting provisions of SSAP No. 108, the reporting entity attests to the following: Yes No
- The reporting entity has obtained explicit approval from the domiciliary state.
 - Hedging strategy subject to the special accounting provisions is consistent with the requirements of VM-21.
 - Actuarial certification has been obtained which indicates that the hedging strategy is incorporated within the establishment of VM-21 reserves and provides the impact of the hedging strategy within the Actuarial Guideline Conditional Tail Expectation Amount.
 - Financial Officer Certification has been obtained which indicates that the hedging strategy meets the definition of a Clearly Defined Hedging Strategy within VM-21 and that the Clearly Defined Hedging Strategy is the hedging strategy being used by the company in its actual day-to-day risk mitigation efforts.
- 28.1 Were any preferred stocks or bonds owned as of December 31 of the current year mandatorily convertible into equity, or, at the option of the issuer, convertible into equity? Yes No
- 28.2 If yes, state the amount thereof at December 31 of the current year. \$
29. Excluding items in Schedule E - Part 3 - Special Deposits, real estate, mortgage loans and investments held physically in the reporting entity's offices, vaults or safety deposit boxes, were all stocks, bonds and other securities, owned throughout the current year held pursuant to a custodial agreement with a qualified bank or trust company in accordance with Section 1, III - General Examination Considerations, F. Outsourcing of Critical Functions, Custodial or Safekeeping Agreements of the NAIC Financial Condition Examiners Handbook?..... Yes No

29.01 For agreements that comply with the requirements of the NAIC Financial Condition Examiners Handbook, complete the following:

1 Name of Custodian(s)	2 Custodian's Address
JP Morgan Chase Bank, N.A	383 Madison Ave, New York, NY 10179

ANNUAL STATEMENT FOR THE YEAR 2022 OF THE AMH Health, LLC

GENERAL INTERROGATORIES

29.02 For all agreements that do not comply with the requirements of the NAIC Financial Condition Examiners Handbook, provide the name, location and a complete explanation:

1 Name(s)	2 Location(s)	3 Complete Explanation(s)

29.03 Have there been any changes, including name changes, in the custodian(s) identified in 29.01 during the current year?..... Yes [] No [X]

29.04 If yes, give full and complete information relating thereto:

1 Old Custodian	2 New Custodian	3 Date of Change	4 Reason

29.05 Investment management – Identify all investment advisors, investment managers, broker/dealers, including individuals that have the authority to make investment decisions on behalf of the reporting entity. For assets that are managed internally by employees of the reporting entity, note as such. ["...that have access to the investment accounts"; "...handle securities"]

1 Name of Firm or Individual	2 Affiliation
Elevance Health, Inc.	I.....
Income Research & Management	U.....
Loomis, Sayles & Company, LP	U.....

29.0597 For those firms/individuals listed in the table for Question 29.05, do any firms/individuals unaffiliated with the reporting entity (i.e. designated with a "U") manage more than 10% of the reporting entity's invested assets?..... Yes [X] No []

29.0598 For firms/individuals unaffiliated with the reporting entity (i.e. designated with a "U") listed in the table for Question 29.05, does the total assets under management aggregate to more than 50% of the reporting entity's invested assets?..... Yes [] No [X]

29.06 For those firms or individuals listed in the table for 29.05 with an affiliation code of "A" (affiliated) or "U" (unaffiliated), provide the information for the table below.

1 Central Registration Depository Number	2 Name of Firm or Individual	3 Legal Entity Identifier (LEI)	4 Registered With	5 Investment Management Agreement (IMA) Filed
105377	Loomis, Sayles & Company, LP	J1ZPN2RX3UMNOY1D1313	Securities Exchange Commission	NO.....
104863	Income Research & Management	254900R033N8JBVSKJ39	Securities Exchange Commission	NO.....

30.1 Does the reporting entity have any diversified mutual funds reported in Schedule D, Part 2 (diversified according to the Securities and Exchange Commission (SEC) in the Investment Company Act of 1940 [Section 5(b)(1)])? Yes [] No [X]

30.2 If yes, complete the following schedule:

1 CUSIP #	2 Name of Mutual Fund	3 Book/Adjusted Carrying Value
30.2999 - Total		0

30.3 For each mutual fund listed in the table above, complete the following schedule:

1 Name of Mutual Fund (from above table)	2 Name of Significant Holding of the Mutual Fund	3 Amount of Mutual Fund's Book/Adjusted Carrying Value Attributable to the Holding	4 Date of Valuation

ANNUAL STATEMENT FOR THE YEAR 2022 OF THE AMH Health, LLC
GENERAL INTERROGATORIES

31. Provide the following information for all short-term and long-term bonds and all preferred stocks. Do not substitute amortized value or statement value for fair value.

	1	2	3
	Statement (Admitted) Value	Fair Value	Excess of Statement over Fair Value (-), or Fair Value over Statement (+)
31.1 Bonds	51,187,000	48,840,952	(2,346,048)
31.2 Preferred stocks	0		0
31.3 Totals	51,187,000	48,840,952	(2,346,048)

31.4 Describe the sources or methods utilized in determining the fair values:

Fair values were obtained from third-party pricing sources. If a security was not priced by a third-party pricing source, internal analytical systems or broker quotes were utilized.

32.1 Was the rate used to calculate fair value determined by a broker or custodian for any of the securities in Schedule D? Yes [] No [X]

32.2 If the answer to 32.1 is yes, does the reporting entity have a copy of the broker's or custodian's pricing policy (hard copy or electronic copy) for all brokers or custodians used as a pricing source? Yes [] No []

32.3 If the answer to 32.2 is no, describe the reporting entity's process for determining a reliable pricing source for purposes of disclosure of fair value for Schedule D:

33.1 Have all the filing requirements of the Purposes and Procedures Manual of the NAIC Investment Analysis Office been followed? Yes [X] No []

33.2 If no, list exceptions:

34. By self-designating 5GI securities, the reporting entity is certifying the following elements of each self-designated 5GI security:
 a. Documentation necessary to permit a full credit analysis of the security does not exist or an NAIC CRP credit rating for an FE or PL security is not available.
 b. Issuer or obligor is current on all contracted interest and principal payments.
 c. The insurer has an actual expectation of ultimate payment of all contracted interest and principal.
 Has the reporting entity self-designated 5GI securities? Yes [] No [X]

35. By self-designating PLGI securities, the reporting entity is certifying the following elements of each self-designated PLGI security:
 a. The security was purchased prior to January 1, 2018.
 b. The reporting entity is holding capital commensurate with the NAIC Designation reported for the security.
 c. The NAIC Designation was derived from the credit rating assigned by an NAIC CRP in its legal capacity as a NRSRO which is shown on a current private letter rating held by the insurer and available for examination by state insurance regulators.
 d. The reporting entity is not permitted to share this credit rating of the PL security with the SVO.
 Has the reporting entity self-designated PLGI securities? Yes [] No [X]

36. By assigning FE to a Schedule BA non-registered private fund, the reporting entity is certifying the following elements of each self-designated FE fund:
 a. The shares were purchased prior to January 1, 2019.
 b. The reporting entity is holding capital commensurate with the NAIC Designation reported for the security.
 c. The security had a public credit rating(s) with annual surveillance assigned by an NAIC CRP in its legal capacity as an NRSRO prior to January 1, 2019.
 d. The fund only or predominantly holds bonds in its portfolio.
 e. The current reported NAIC Designation was derived from the public credit rating(s) with annual surveillance assigned by an NAIC CRP in its legal capacity as an NRSRO.
 f. The public credit rating(s) with annual surveillance assigned by an NAIC CRP has not lapsed.
 Has the reporting entity assigned FE to Schedule BA non-registered private funds that complied with the above criteria? Yes [] No [X]

37. By rolling/renewing short-term or cash equivalent investments with continued reporting on Schedule DA, Part 1 or Schedule E Part 2 (identified through a code (%) in those investment schedules), the reporting entity is certifying to the following:
 a. The investment is a liquid asset that can be terminated by the reporting entity on the current maturity date.
 b. If the investment is with a nonrelated party or nonaffiliate, then it reflects an arms-length transaction with renewal completed at the discretion of all involved parties.
 c. If the investment is with a related party or affiliate, then the reporting entity has completed robust re-underwriting of the transaction for which documentation is available for regulator review.
 d. Short-term and cash equivalent investments that have been renewed/rolled from the prior period that do not meet the criteria in 37.a - 37.c are reported as long-term investments.
 Has the reporting entity rolled/renewed short-term or cash equivalent investments in accordance with these criteria? Yes [] No [X] N/A []

ANNUAL STATEMENT FOR THE YEAR 2022 OF THE AMH Health, LLC

GENERAL INTERROGATORIES

38.1 Does the reporting entity directly hold cryptocurrencies? Yes [] No [X]

38.2 If the response to 38.1 is yes, on what schedule are they reported?
.....

39.1 Does the reporting entity directly or indirectly accept cryptocurrencies as payments for premiums on policies? Yes [] No [X]

39.2 If the response to 39.1 is yes, are the cryptocurrencies held directly or are they immediately converted to U.S. dollars?
39.21 Held directly Yes [] No []
39.22 Immediately converted to U.S. dollars Yes [] No []

39.3 If the response to 38.1 or 39.1 is yes, list all cryptocurrencies accepted for payments of premiums or that are held directly.

1	2	3
Name of Cryptocurrency	Immediately Converted to USD, Directly Held, or Both	Accepted for Payment of Premiums

OTHER

40.1 Amount of payments to trade associations, service organizations and statistical or rating bureaus, if any? \$ 8,385

40.2 List the name of the organization and the amount paid if any such payment represented 25% or more of the total payments to trade associations, service organizations and statistical or rating bureaus during the period covered by this statement.

1	2
Name	Amount Paid
Blue Cross Blue Shield Association	8,385

41.1 Amount of payments for legal expenses, if any? \$ 312,716

41.2 List the name of the firm and the amount paid if any such payment represented 25% or more of the total payments for legal expenses during the period covered by this statement.

1	2
Name	Amount Paid
OMELVENY & MYERS Total	188,873

42.1 Amount of payments for expenditures in connection with matters before legislative bodies, officers or departments of government, if any? \$ 10,618

42.2 List the name of the firm and the amount paid if any such payment represented 25% or more of the total payment expenditures in connection with matters before legislative bodies, officers, or departments of government during the period covered by this statement.

1	2
Name	Amount Paid
Preti Flaherty Beliveau Pachios LLP	9,825
Lobbying expenses disclosed reflect amounts reported in the Lobbyist Disclosure Reports filed with the Secretary of State as well as the cost of external contractors who provided lobbying services to the Company. The amount may include expenses that may have been paid by an affiliate on behalf of the Company and, as a result, may not be included in the Underwriting Gain reported on page 4 of the 2022 Annual Statement.	

GENERAL INTERROGATORIES

PART 2 - HEALTH INTERROGATORIES

1.1 Does the reporting entity have any direct Medicare Supplement Insurance in force? Yes [] No [X]

1.2 If yes, indicate premium earned on U.S. business only. \$ _____

1.3 What portion of Item (1.2) is not reported on the Medicare Supplement Insurance Experience Exhibit? \$ _____

1.31 Reason for excluding
.....

1.4 Indicate amount of earned premium attributable to Canadian and/or Other Alien not included in Item (1.2) above \$ _____

1.5 Indicate total incurred claims on all Medicare Supplement Insurance. \$ _____ 0

1.6 Individual policies: Most current three years:

1.61 Total premium earned \$ 0

1.62 Total incurred claims \$ 0

1.63 Number of covered lives 0

All years prior to most current three years:

1.64 Total premium earned \$ 0

1.65 Total incurred claims \$ 0

1.66 Number of covered lives 0

1.7 Group policies: Most current three years:

1.71 Total premium earned \$ 0

1.72 Total incurred claims \$ 0

1.73 Number of covered lives 0

All years prior to most current three years:

1.74 Total premium earned \$ 0

1.75 Total incurred claims \$ 0

1.76 Number of covered lives 0

2. Health Test:

	1 Current Year	2 Prior Year
2.1 Premium Numerator	224,429,321	170,491,948
2.2 Premium Denominator	224,429,321	170,491,948
2.3 Premium Ratio (2.1/2.2)	1.000	1.000
2.4 Reserve Numerator	44,192,390	27,493,820
2.5 Reserve Denominator	44,192,390	27,493,820
2.6 Reserve Ratio (2.4/2.5)	1.000	1.000

3.1 Has the reporting entity received any endowment or gift from contracting hospitals, physicians, dentists, or others that is agreed will be returned when, as and if the earnings of the reporting entity permits? Yes [] No [X]

3.2 If yes, give particulars:
.....

4.1 Have copies of all agreements stating the period and nature of hospitals', physicians', and dentists' care offered to subscribers and dependents been filed with the appropriate regulatory agency? Yes [X] No []

4.2 If not previously filed, furnish herewith a copy(ies) of such agreement(s). Do these agreements include additional benefits offered? Yes [] No []

5.1 Does the reporting entity have stop-loss reinsurance? Yes [] No [X]

5.2 If no, explain:
Elevance Health, Inc. will assume, pay, and discharge the obligations in the event the Company is insolvent.

5.3 Maximum retained risk (see instructions)

5.31 Comprehensive Medical \$ 0

5.32 Medical Only \$ 0

5.33 Medicare Supplement \$ 0

5.34 Dental & Vision \$ 0

5.35 Other Limited Benefit Plan \$ 0

5.36 Other \$ 0

6. Describe arrangement which the reporting entity may have to protect subscribers and their dependents against the risk of insolvency including hold harmless provisions, conversion privileges with other carriers, agreements with providers to continue rendering services, and any other agreements:
Physician and hospital contracts contain provisions, including hold harmless agreements, to protect members and dependents against insolvency.

7.1 Does the reporting entity set up its claim liability for provider services on a service date basis?..... Yes [X] No []

7.2 If no, give details
.....

8. Provide the following information regarding participating providers: 8.1 Number of providers at start of reporting year 14,722

8.2 Number of providers at end of reporting year 14,016

9.1 Does the reporting entity have business subject to premium rate guarantees? Yes [] No [X]

9.2 If yes, direct premium earned: 9.21 Business with rate guarantees between 15-36 months.. \$.....

9.22 Business with rate guarantees over 36 months \$.....

ANNUAL STATEMENT FOR THE YEAR 2022 OF THE AMH Health, LLC

FIVE-YEAR HISTORICAL DATA

	1 2022	2 2021	3 2020	4 2019	5 2018
Balance Sheet (Pages 2 and 3)					
1. Total admitted assets (Page 2, Line 28)	96,659,501	113,783,409	54,566,885	6,715,354	
2. Total liabilities (Page 3, Line 24)	57,775,263	83,041,704	40,465,057	360,286	
3. Statutory minimum capital and surplus requirement	24,388,450	16,092,180	8,930,955	27,358	
4. Total capital and surplus (Page 3, Line 33)	38,884,238	30,741,705	14,101,828	6,355,068	
Income Statement (Page 4)					
5. Total revenues (Line 8)	224,449,133	169,263,979	76,115,663	0	
6. Total medical and hospital expenses (Line 18)	214,950,117	149,478,903	64,029,638	0	
7. Claims adjustment expenses (Line 20)	9,134,366	8,378,491	2,903,480	0	
8. Total administrative expenses (Line 21)	22,340,915	17,701,718	9,932,179	180,654	
9. Net underwriting gain (loss) (Line 24)	(29,441,797)	(6,295,133)	(749,634)	(180,654)	
10. Net investment gain (loss) (Line 27)	602,119	411,598	(10,181)	(2,779)	
11. Total other income (Lines 28 plus 29)	20,170	48,146	36,832	0	
12. Net income or (loss) (Line 32)	(28,631,946)	(5,823,045)	(981,719)	(144,932)	
Cash Flow (Page 6)					
13. Net cash from operations (Line 11)	(13,045,467)	(676,319)	11,164,297	(180,426)	
Risk-Based Capital Analysis					
14. Total adjusted capital	38,884,238	30,741,705	14,101,828	6,355,068	
15. Authorized control level risk-based capital	9,755,380	7,292,431	3,572,382	10,943	
Enrollment (Exhibit 1)					
16. Total members at end of period (Column 5, Line 7)	17,201	14,152	7,646		
17. Total members months (Column 6, Line 7)	202,097	160,585	69,079		
Operating Percentage (Page 4) (Item divided by Page 4, sum of Lines 2, 3 and 5) x 100.0					
18. Premiums earned plus risk revenue (Line 2 plus Lines 3 and 5)	100.0	100.0	100.0	100.0	100.0
19. Total hospital and medical plus other non-health (Lines 18 plus Line 19)	95.8	88.3	84.1	0.0	
20. Cost containment expenses	2.4	3.1	1.8	0.0	
21. Other claims adjustment expenses	1.7	1.9	2.0	0.0	
22. Total underwriting deductions (Line 23)	113.1	103.7	101.0	0.0	
23. Total underwriting gain (loss) (Line 24)	(13.1)	(3.7)	(1.0)	0.0	
Unpaid Claims Analysis (U&I Exhibit, Part 2B)					
24. Total claims incurred for prior years (Line 17, Col. 5)	27,575,194	10,559,035			
25. Estimated liability of unpaid claims-[prior year (Line 17, Col. 6)]	26,257,959	12,792,387	0		
Investments In Parent, Subsidiaries and Affiliates					
26. Affiliated bonds (Sch. D Summary, Line 12, Col. 1)	0		0		
27. Affiliated preferred stocks (Sch. D Summary, Line 18, Col. 1)		0	0	0	
28. Affiliated common stocks (Sch. D Summary, Line 24, Col. 1)	3,749,378	3,936,356	2,238,256	0	
29. Affiliated short-term investments (subtotal included in Schedule DA Verification, Col. 5, Line 10)	0		0		
30. Affiliated mortgage loans on real estate					
31. All other affiliated					
32. Total of above Lines 26 to 31	3,749,378	3,936,356	2,238,256	0	0
33. Total investment in parent included in Lines 26 to 31 above.					

NOTE: If a party to a merger, have the two most recent years of this exhibit been restated due to a merger in compliance with the disclosure requirements of SSAP No. 3, Accounting Changes and Correction of Errors? Yes [] No []
 If no, please explain:

SCHEDULE T PREMIUMS AND OTHER CONSIDERATIONS

Allocated by States and Territories

States, etc.	1 Active Status (a)	Direct Business Only									
		2 Accident and Health Premiums	3 Medicare Title XVIII	4 Medicaid Title XIX	5 CHIP Title XXI	6 Federal Employees Health Benefits Program Premiums	7 Life and Annuity Premiums & Other Considerations	8 Property/Casualty Premiums	9 Total Columns 2 Through 8	10 Deposit-Type Contracts	
1. Alabama	AL	N								0	
2. Alaska	AK	N								0	
3. Arizona	AZ	N								0	
4. Arkansas	AR	N								0	
5. California	CA	N								0	
6. Colorado	CO	N								0	
7. Connecticut	CT	N								0	
8. Delaware	DE	N								0	
9. District of Columbia	DC	N								0	
10. Florida	FL	N								0	
11. Georgia	GA	N								0	
12. Hawaii	HI	N								0	
13. Idaho	ID	N								0	
14. Illinois	IL	N								0	
15. Indiana	IN	N								0	
16. Iowa	IA	N								0	
17. Kansas	KS	N								0	
18. Kentucky	KY	N								0	
19. Louisiana	LA	N								0	
20. Maine	ME	L	224,429,321							224,429,321	
21. Maryland	MD	N								0	
22. Massachusetts	MA	N								0	
23. Michigan	MI	N								0	
24. Minnesota	MN	N								0	
25. Mississippi	MS	N								0	
26. Missouri	MO	N								0	
27. Montana	MT	N								0	
28. Nebraska	NE	N								0	
29. Nevada	NV	N								0	
30. New Hampshire	NH	N								0	
31. New Jersey	NJ	N								0	
32. New Mexico	NM	N								0	
33. New York	NY	N								0	
34. North Carolina	NC	N								0	
35. North Dakota	ND	N								0	
36. Ohio	OH	N								0	
37. Oklahoma	OK	N								0	
38. Oregon	OR	N								0	
39. Pennsylvania	PA	N								0	
40. Rhode Island	RI	N								0	
41. South Carolina	SC	N								0	
42. South Dakota	SD	N								0	
43. Tennessee	TN	N								0	
44. Texas	TX	N								0	
45. Utah	UT	N								0	
46. Vermont	VT	N								0	
47. Virginia	VA	N								0	
48. Washington	WA	N								0	
49. West Virginia	WV	N								0	
50. Wisconsin	WI	N								0	
51. Wyoming	WY	N								0	
52. American Samoa	AS	N								0	
53. Guam	GU	N								0	
54. Puerto Rico	PR	N								0	
55. U.S. Virgin Islands	VI	N								0	
56. Northern Mariana Islands	MP	N								0	
57. Canada	CAN	N								0	
58. Aggregate Other Aliens	OT	XXX	0	0	0	0	0	0	0	0	0
59. Subtotal	XXX	0	224,429,321	0	0	0	0	0	0	224,429,321	0
60. Reporting Entity Contributions for Employee Benefit Plans	XXX									0	
61. Totals (Direct Business)	XXX	0	224,429,321	0	0	0	0	0	0	224,429,321	0
DETAILS OF WRITE-INS											
58001.	XXX										
58002.	XXX										
58003.	XXX										
58998. Summary of remaining write-ins for Line 58 from overflow page	XXX	0	0	0	0	0	0	0	0	0	0
58999. Totals (Lines 58001 through 58003 plus 58998)(Line 58 above)	XXX	0	0	0	0	0	0	0	0	0	0

(a) Active Status Counts:
 1. L - Licensed or Chartered - Licensed insurance carrier or domiciled RRG..... 1
 2. R - Registered - Non-domiciled RRGs..... 0
 3. E - Eligible - Reporting entities eligible or approved to write surplus lines in the state. 0
 4. Q - Qualified - Qualified or accredited reinsurer..... 0
 5. N - None of the above - Not allowed to write business in the state..... 56

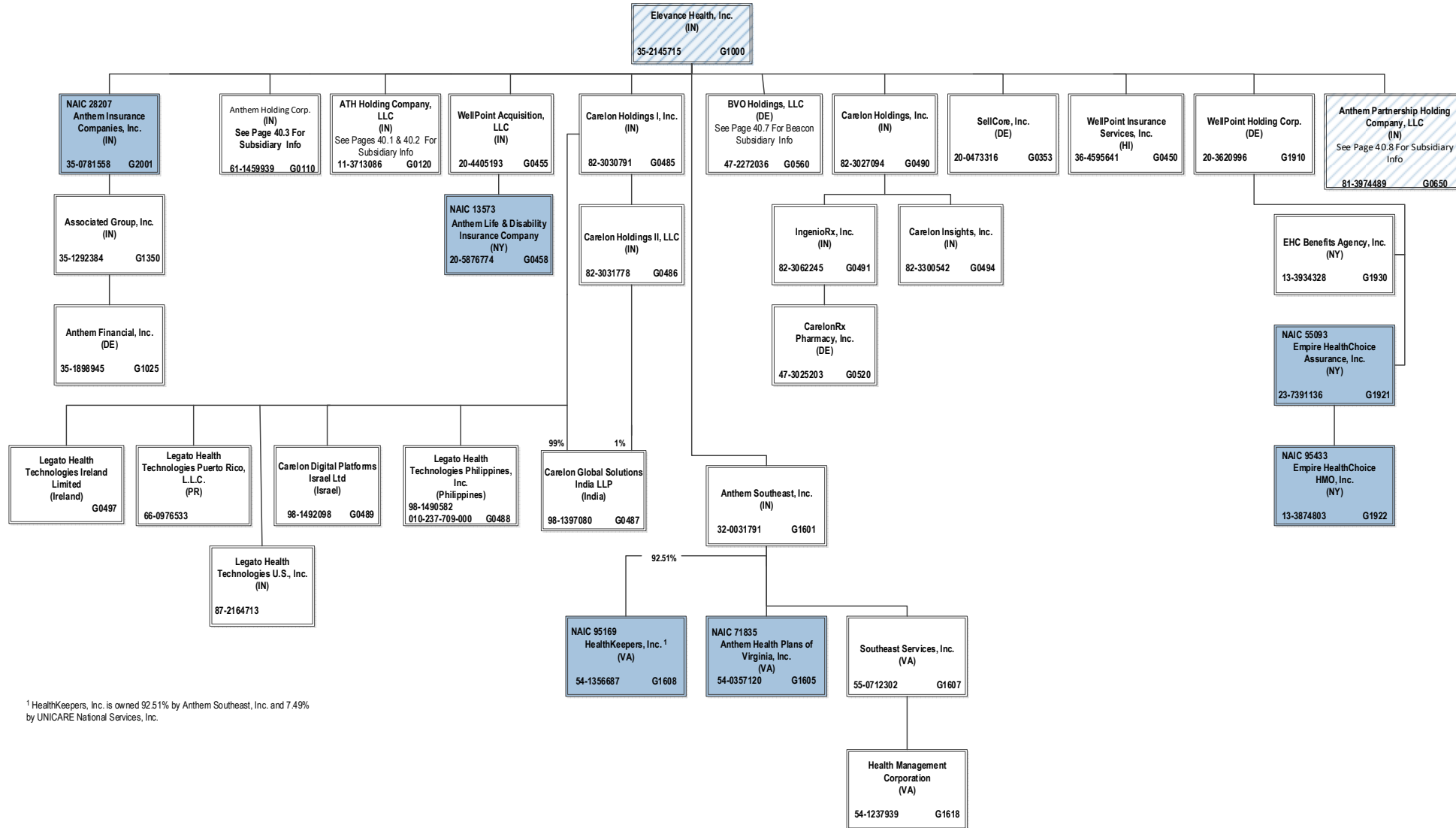
(b) Explanation of basis of allocation by states, premiums by state, etc.
 Not applicable

SCHEDULE Y – INFORMATION CONCERNING ACTIVITIES OF INSURER MEMBERS OF A HOLDING COMPANY GROUP

PART 1 – ORGANIZATIONAL CHART

BCBSA Licensee
Regulated Insurance Company
Regulated BCBSA Licensee

ALL SUBSIDIARIES 100% OWNED AND LLC'S ARE CONTROLLED BY MEMBERS UNLESS OTHERWISE NOTED

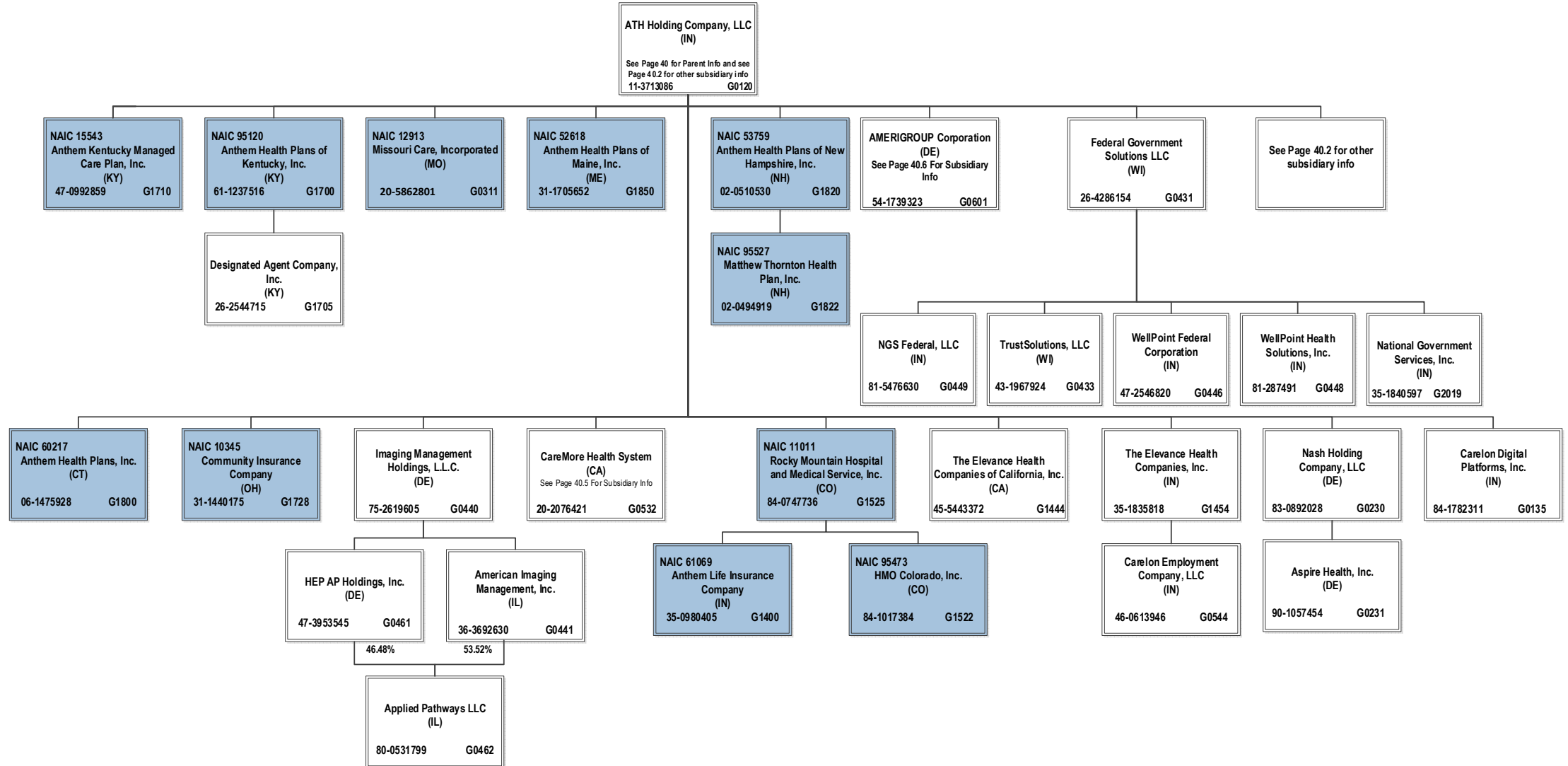


¹ HealthKeepers, Inc. is owned 92.51% by Anthem Southeast, Inc. and 7.49% by UNICARE National Services, Inc.

SCHEDULE Y – INFORMATION CONCERNING ACTIVITIES OF INSURER MEMBERS OF A HOLDING COMPANY GROUP
PART 1 – ORGANIZATIONAL CHART

ALL SUBSIDIARIES 100% OWNED AND LLC'S ARE CONTROLLED BY MEMBERS UNLESS OTHERWISE NOTED

BCBSA Licensee
Regulated Insurance Company
Regulated BCBSA Licensee

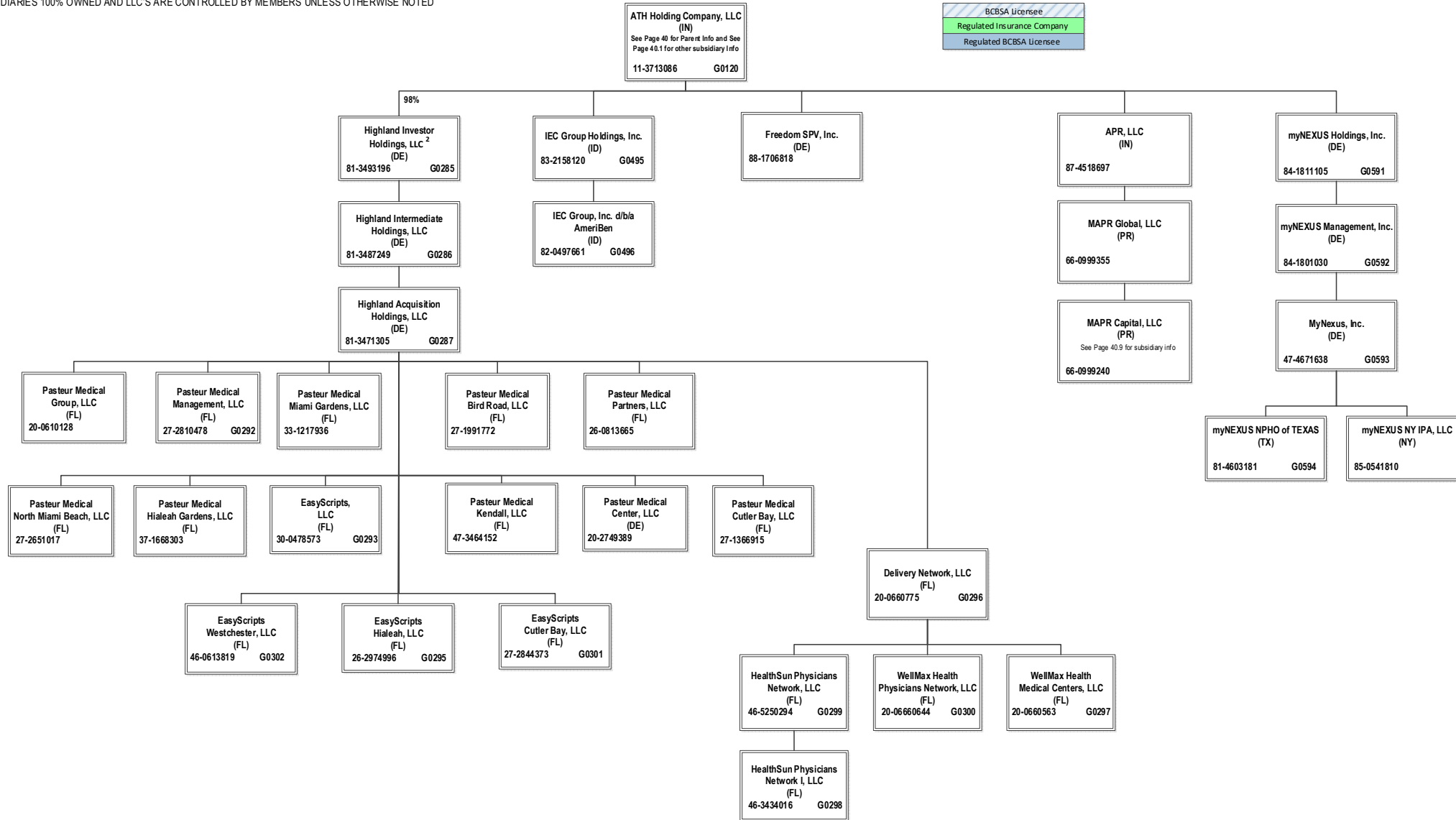


40.1

SCHEDULE Y – INFORMATION CONCERNING ACTIVITIES OF INSURER MEMBERS OF A HOLDING COMPANY GROUP

PART 1 – ORGANIZATIONAL CHART

ALL SUBSIDIARIES 100% OWNED AND LLC'S ARE CONTROLLED BY MEMBERS UNLESS OTHERWISE NOTED



² ATH Holding Company, LLC holds a 98% interest in Highland Investor Holdings, LLC, and Amerigroup Corporation holds the remaining 2% interest.

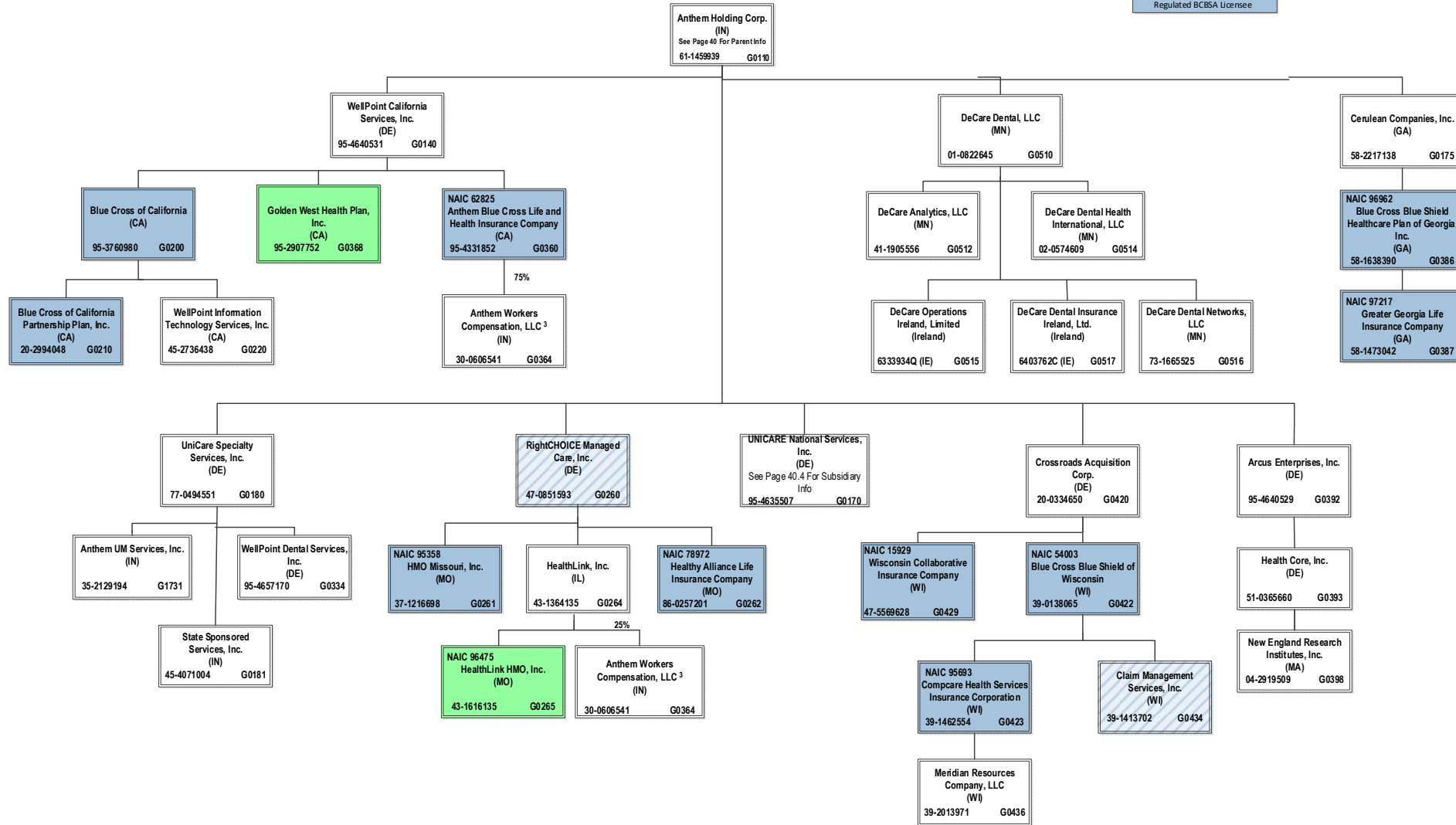
40.2

ANNUAL STATEMENT FOR THE YEAR 2022 OF THE AMH Health, LLC

SCHEDULE Y – INFORMATION CONCERNING ACTIVITIES OF INSURER MEMBERS OF A HOLDING COMPANY GROUP
PART 1 – ORGANIZATIONAL CHART

ALL SUBSIDIARIES 100% OWNED AND LLC'S ARE CONTROLLED BY MEMBERS UNLESS OTHERWISE NOTED

BCBSA Licensee
Regulated Insurance Company
Regulated BCBSA Licensee



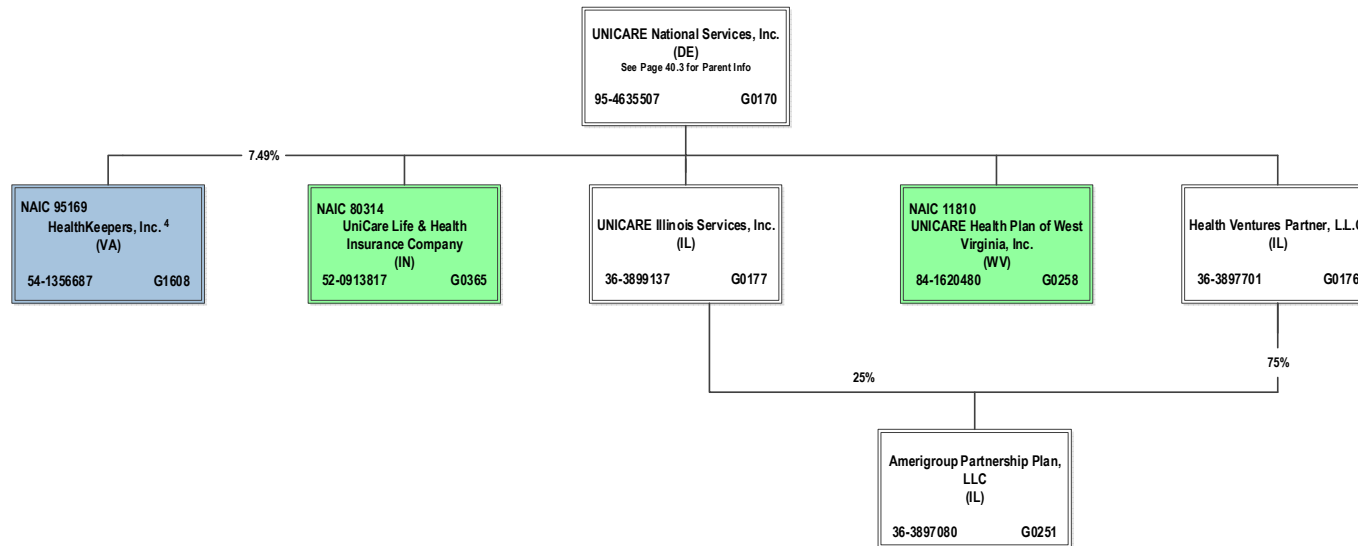
³ Anthem Workers' Compensation, LLC is owned 75% by Anthem Blue Cross Life and Health Insurance Company and 25% by HealthLink, Inc.

40.3

SCHEDULE Y – INFORMATION CONCERNING ACTIVITIES OF INSURER MEMBERS OF A HOLDING COMPANY GROUP
PART 1 – ORGANIZATIONAL CHART

ALL SUBSIDIARIES 100% OWNED AND LLC'S ARE CONTROLLED BY MEMBERS UNLESS OTHERWISE NOTED

BCBSA Licensee
Regulated Insurance Company
Regulated BCBSA Licensee



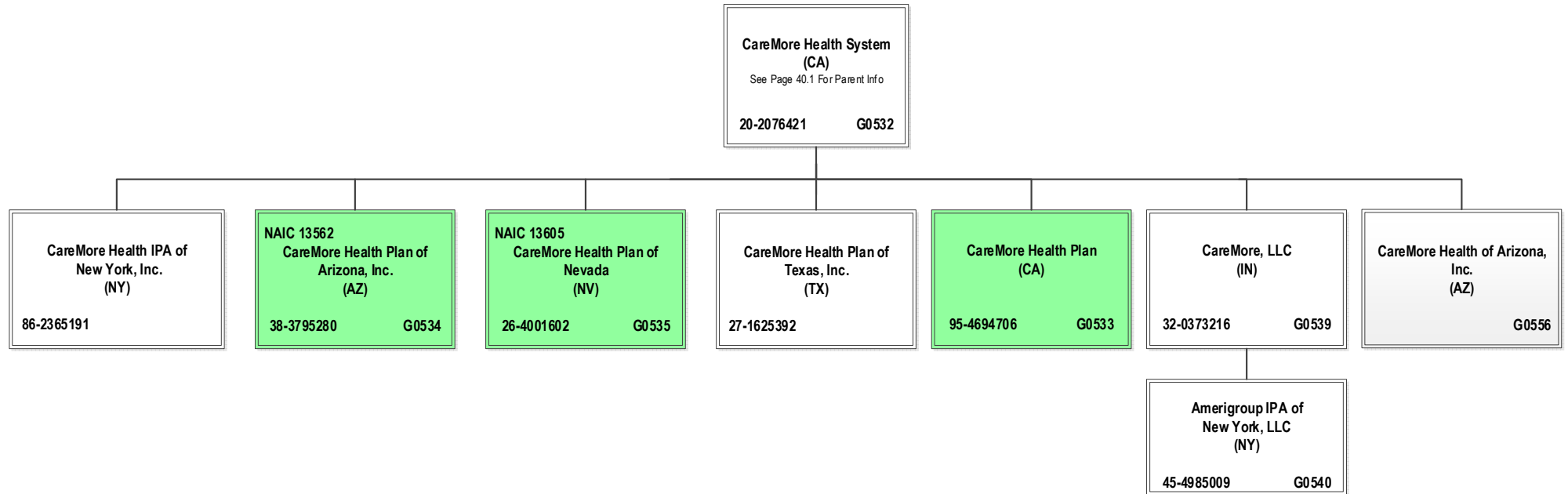
40.4

⁴ HealthKeepers, Inc. is owned 92.51% by Anthem Southeast, Inc. and 7.49% by UNICARE National Services, Inc.

SCHEDULE Y – INFORMATION CONCERNING ACTIVITIES OF INSURER MEMBERS OF A HOLDING COMPANY GROUP
PART 1 – ORGANIZATIONAL CHART

BCBSA Licensee
Regulated Insurance Company
Regulated BCBSA Licensee

ALL SUBSIDIARIES 100% OWNED AND LLC'S ARE CONTROLLED BY MEMBERS UNLESS OTHERWISE NOTED

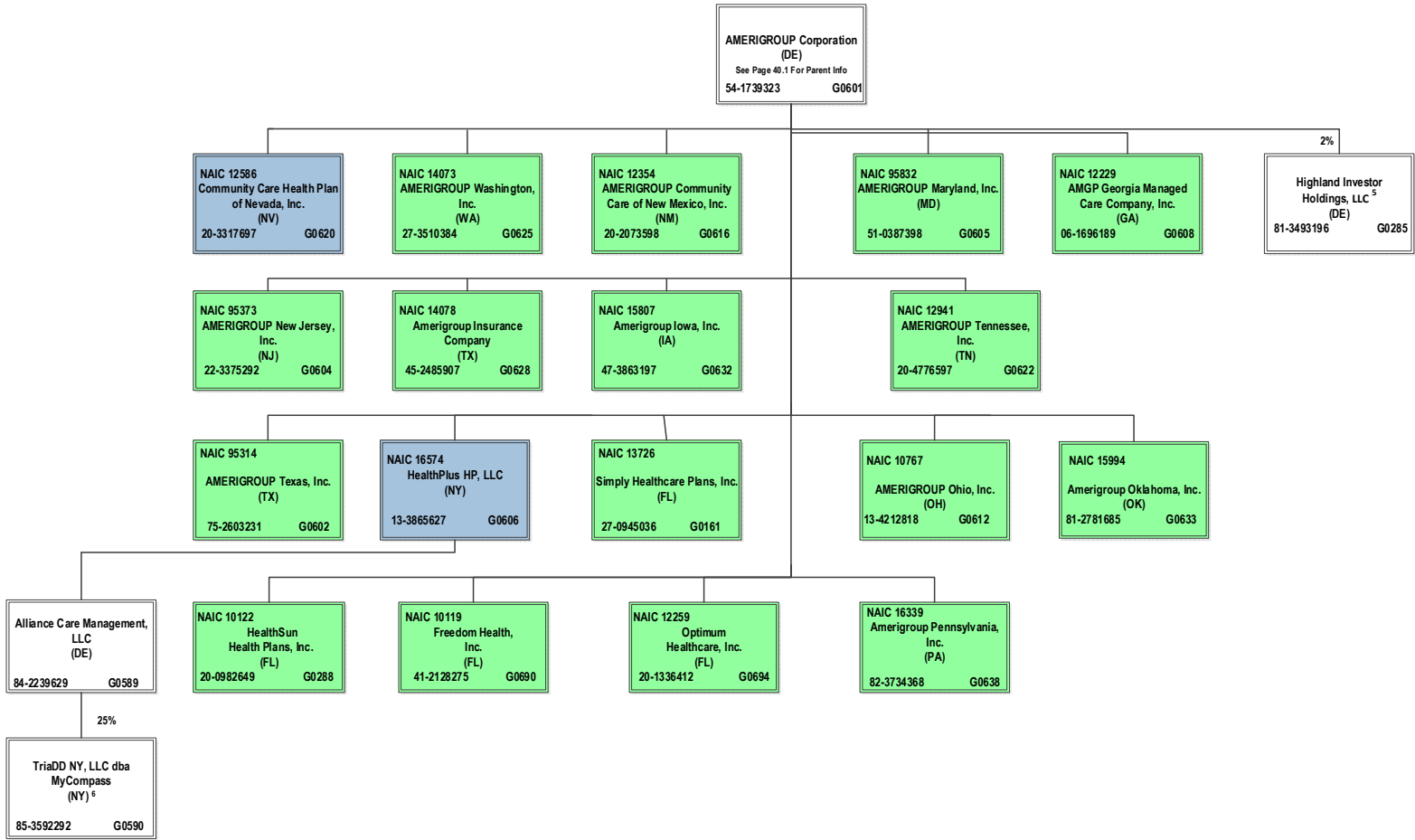


40.5

SCHEDULE Y – INFORMATION CONCERNING ACTIVITIES OF INSURER MEMBERS OF A HOLDING COMPANY GROUP
PART 1 – ORGANIZATIONAL CHART

ALL SUBSIDIARIES 100% OWNED AND LLC'S ARE CONTROLLED BY MEMBERS UNLESS OTHERWISE NOTED

BCBSA Licensee
Regulated Insurance Company
Regulated BCBSA Licensee



40.6

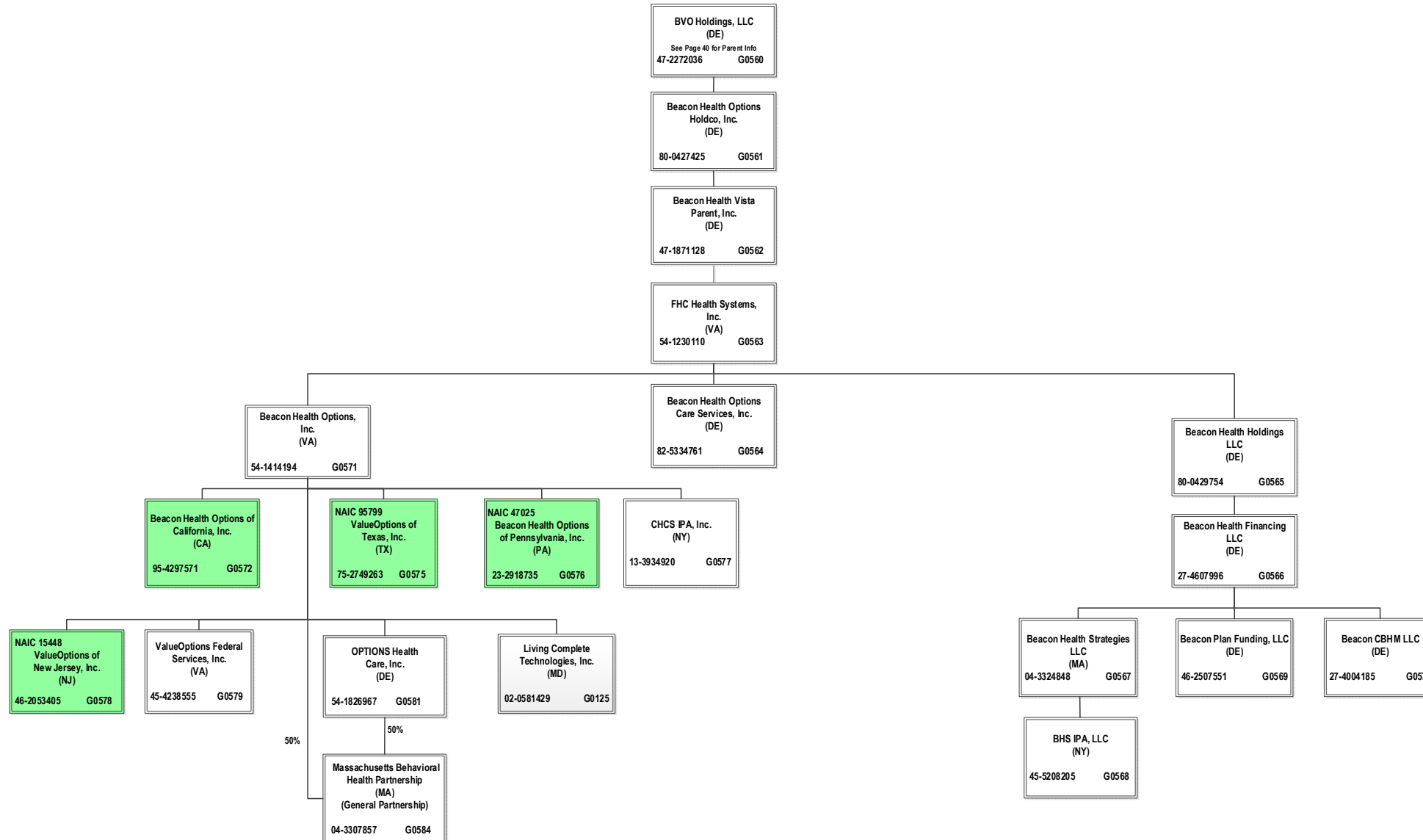
⁵ Amerigroup Corporation holds a 2% interest in Highland Investor Holdings, LLC, and ATH Holding Company, LLC holds the remaining 98% interest.

⁶ TriaDD NY, LLC dba MyCompass is 25% owned by Alliance Care Management, LLC and the remaining 75% interest is owned by unaffiliated investors.

SCHEDULE Y – INFORMATION CONCERNING ACTIVITIES OF INSURER MEMBERS OF A HOLDING COMPANY GROUP
PART 1 – ORGANIZATIONAL CHART

BCBSA Licensee
Regulated Insurance Company
Regulated BCBSA Licensee

ALL SUBSIDIARIES 100% OWNED AND LLC'S ARE CONTROLLED BY MEMBERS UNLESS OTHERWISE NOTED



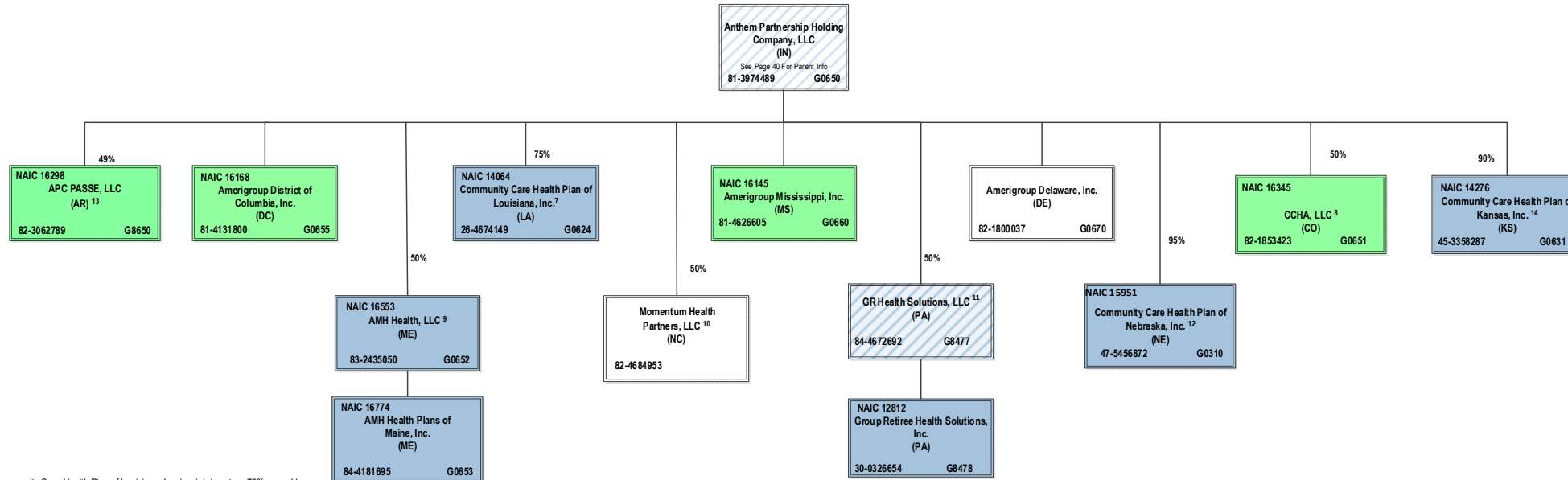
40.7

SCHEDULE Y – INFORMATION CONCERNING ACTIVITIES OF INSURER MEMBERS OF A HOLDING COMPANY GROUP

PART 1 – ORGANIZATIONAL CHART

BCBSA Licensee
Regulated Insurance Company
Regulated BCBSA Licensee

ALL SUBSIDIARIES 100% OWNED AND LLC'S ARE CONTROLLED BY MEMBERS UNLESS OTHERWISE NOTED



⁷ Community Care Health Plan of Louisiana, Inc. is a joint venture 75% owned by Anthem Partnership Holding Company, LLC and 25% owned by Louisiana Health Service & Indemnity Company d/b/a Blue Cross and Blue Shield of Louisiana (non-affiliate)

⁸ CCHA, LLC is a joint venture 50% owned by Anthem Partnership Holding Company, LLC and 50% owned by Colorado Community Health Alliance, LLC (non-affiliate)

⁹ AMH Health, LLC is a joint venture 50% owned by MaineHealth (non-affiliate) and 50% owned by Anthem Partnership Holding Company, LLC

¹⁰ Momentum Health Partners, LLC is a joint venture 50% owned by Anthem Partnership Holding Company, LLC and 50% owned by Blue Cross and Blue Shield of North Carolina (non-affiliate)

¹¹ GR Health Solutions, LLC is a joint venture 50% owned by Anthem Partnership Holding Company, LLC and 50% owned by Independence Blue Cross, LLC (non-affiliate)

¹² Community Care Health Plan of Nebraska, Inc. is a joint venture 95% owned by Anthem Partnership Holding Company, LLC and 5% owned by Blue Cross and Blue Shield of Nebraska, Inc. (non-affiliate)

¹³ APC PASSE, LLC (regulated entity) is a joint venture 49% owned by Anthem Partnership Holding Company, LLC and 51% owned by Arkansas Provider Coalition, LLC (non-affiliate)

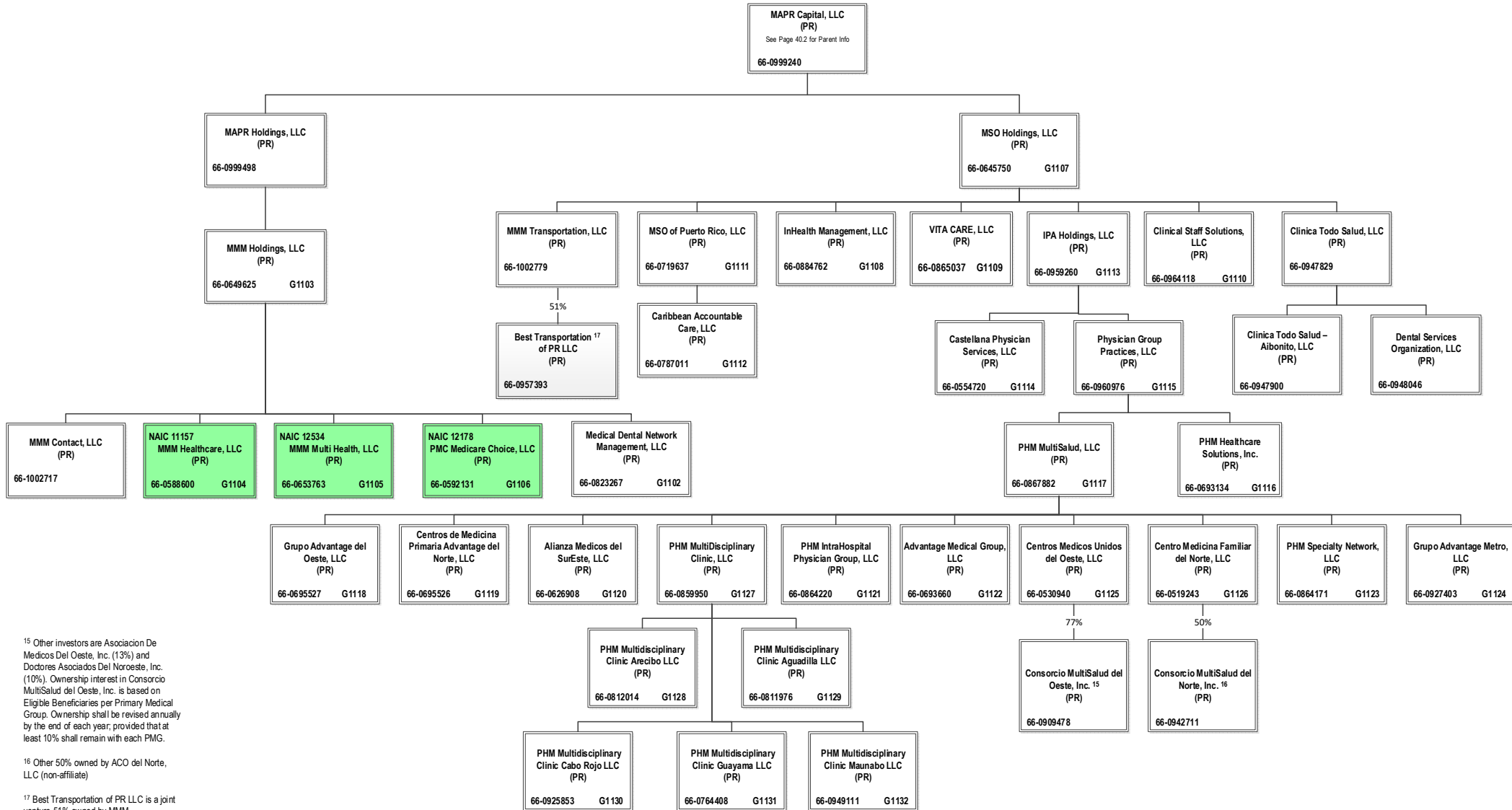
¹⁴ Community Care Health Plan of Kansas, Inc. is a joint venture 90% owned by Anthem Partnership Holding Company, LLC, 5% owned by Blue Cross and Blue Shield of Kansas (non-affiliate) and 5% owned by Blue Cross and Blue Shield of Kansas City (non-affiliate)

ANNUAL STATEMENT FOR THE YEAR 2022 OF THE AMH Health, LLC

SCHEDULE Y – INFORMATION CONCERNING ACTIVITIES OF INSURER MEMBERS OF A HOLDING COMPANY GROUP
PART 1 – ORGANIZATIONAL CHART

BCBSA Licensee
Regulated Insurance Company
Regulated BCBSA Licensee

ALL SUBSIDIARIES 100% OWNED AND LLC'S ARE CONTROLLED BY MEMBERS UNLESS OTHERWISE NOTED



¹⁵ Other investors are Asociacion De Medicos Del Oeste, Inc. (13%) and Doctores Asociados Del Noroeste, Inc. (10%). Ownership interest in Consorcio MultiSalud del Oeste, Inc. is based on Eligible Beneficiaries per Primary Medical Group. Ownership shall be revised annually by the end of each year, provided that at least 10% shall remain with each PMG.

¹⁶ Other 50% owned by ACO del Norte, LLC (non-affiliate)

¹⁷ Best Transportation of PR LLC is a joint venture 51% owned by MMM Transportation, LLC and 49% owned by Best Transportation of PR LLC

OVERFLOW PAGE FOR WRITE-INS

NONE